



Memorandum

Date: April 11, 2018
To: Board of Directors
From: Kellyx Nelson
Re: Recommendation to Contract with Campbell Grading Inc. for Pond Construction at the Creek Streamflow Enhancement Project, Carpy Ranch

RCD staff recommends Campbell Grading Inc. for the construction of a 15.2-acre foot (AF) agricultural water storage pond at Carpy Ranch in Pescadero. This pond is a component of the Creek Streamflow Enhancement Project, Carpy Ranch which aims to improve in-stream flow for anadromous fish passage and habitat.

Carpy Ranch is located in the town of Pescadero, northwest of the junction of Stage Road and North Street (see site map). Carpy Ranch borders Bradley Creek on its eastern edge, and Pescadero Creek to the south. The ranch encompasses several hundred acres of coastal agricultural grassland. Agricultural uses of the ranch include cattle grazing, growing hay, and growing pumpkins. Installation of the 15.2 AF pond will allow Carpy Ranch to cease diversions from the creek during the dry season (August-October) allowing critical instream flow to remain in Pescadero creek.

A Request for Bids was distributed to 3 contractors and posted on the RCD's website on March 15, 2018. Campbell Grading Inc. was the only company to attend the pre-bid site visit and to submit a bid (which totaled \$692,709.23).

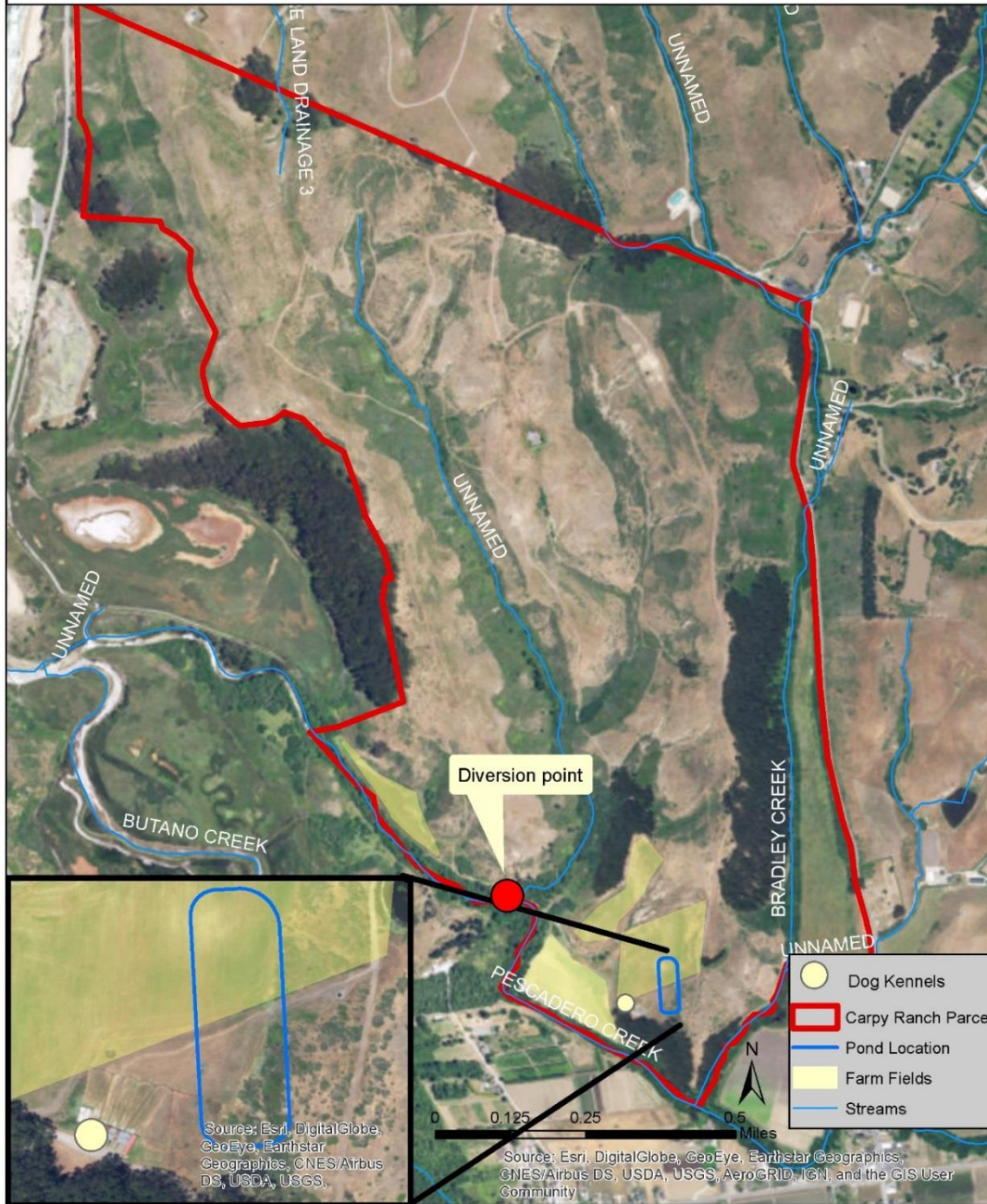
After checking references and deliberating with project partners RCD staff has decided to recommend Campbell Grading Inc. to complete this project because:

- The RCD has had positive experiences in previous work with Campbell Grading Inc.
- All references gave Campbell Grading Inc. outstanding recommendations.
- Campbell Grading Inc. was the only company to bid on the project.
- The bid package was complete, the proposed approach was sound, and the bid amount is within the RCD's budget for the project.

Site Map

Carpy Ranch Project Site

Created By: Jarrad Fisher
Date: 10/10/2017



Site Photos

