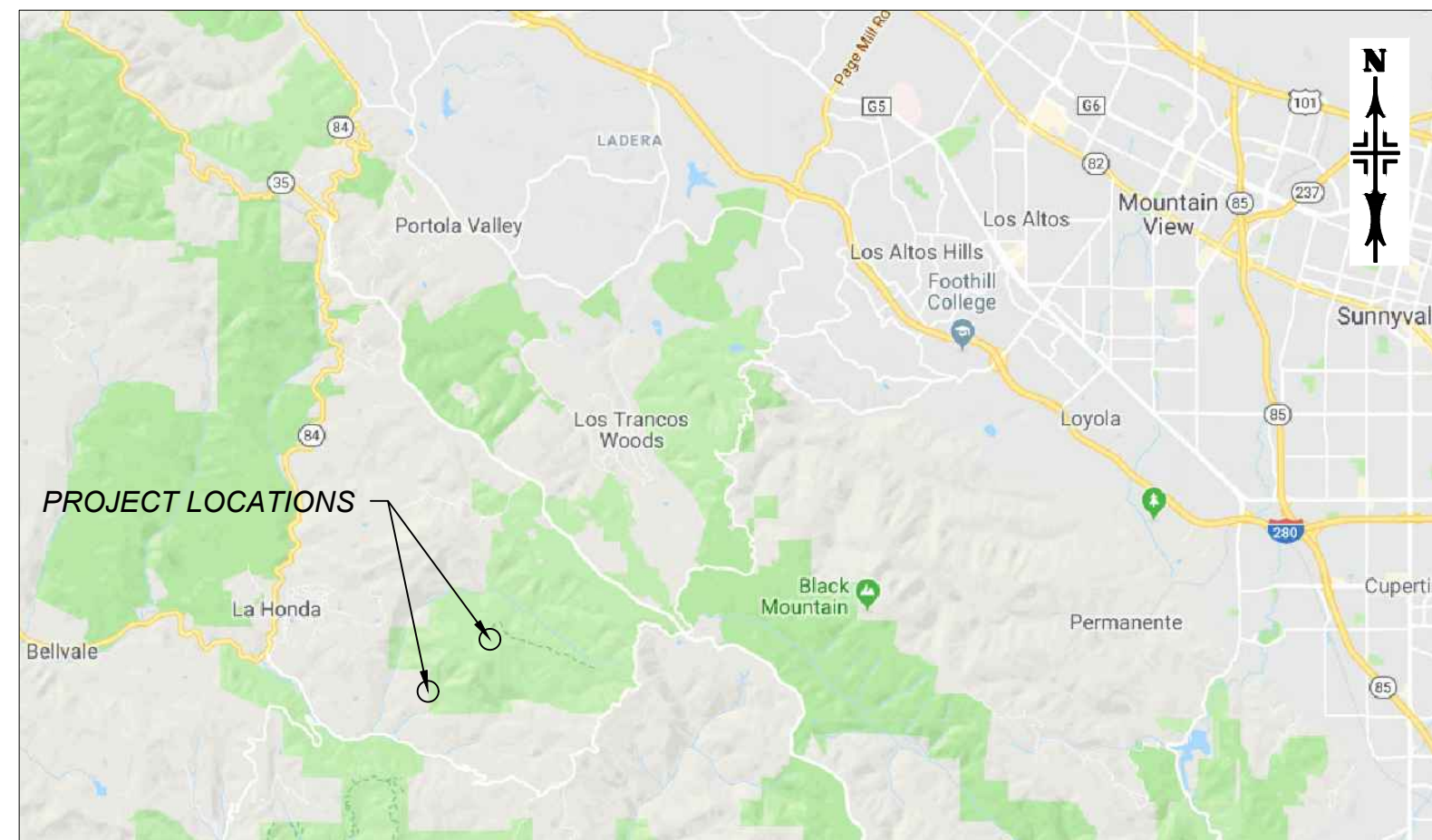


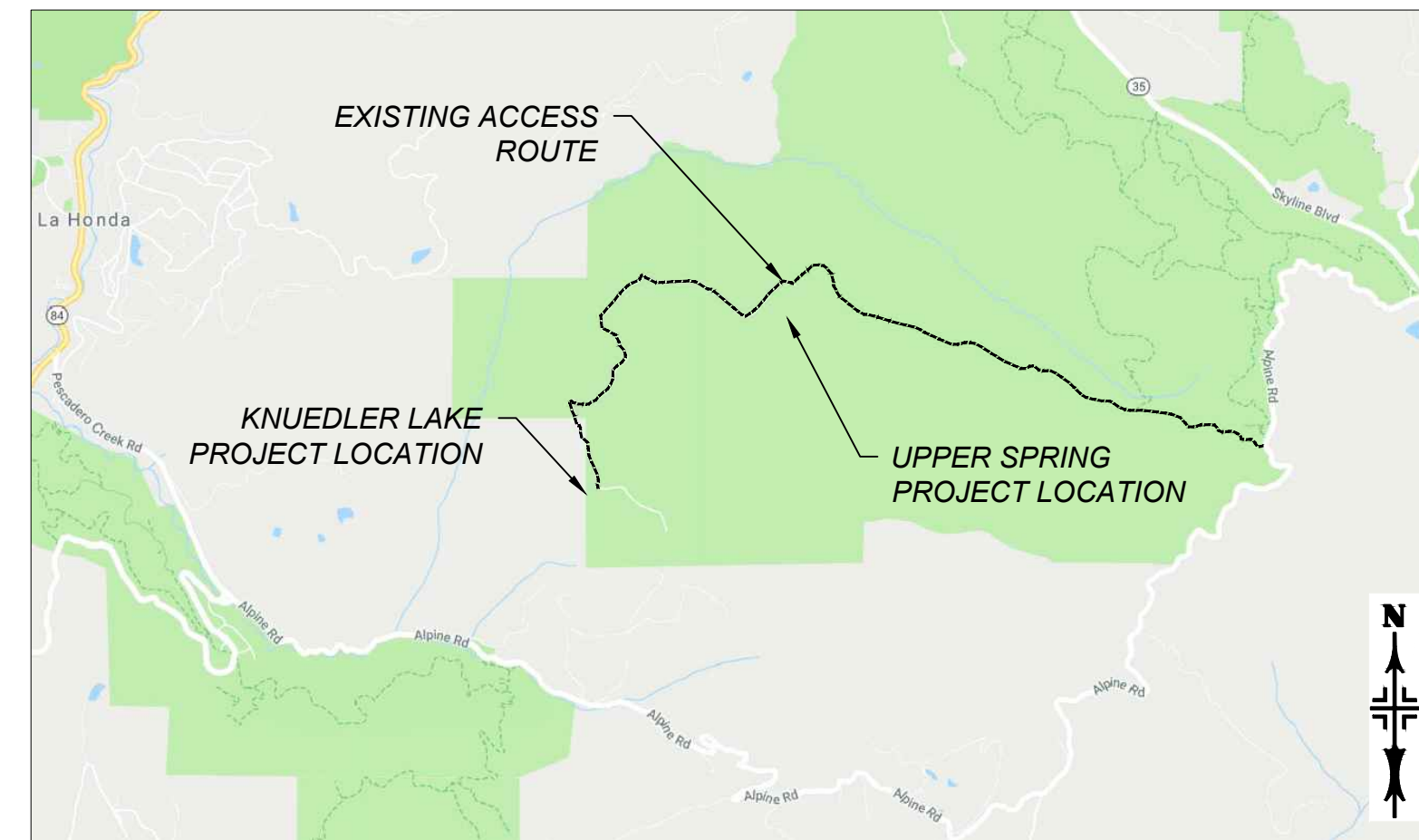
MINDEGO RANCH PONDS ENHANCEMENT PROJECT

SAN MATEO COUNTY, CALIFORNIA
MIDPENINSULA REGIONAL OPEN SPACE DISTRICT

PRELIMINARY DESIGN
NOT FOR CONSTRUCTION



PROJECT VICINITY MAP
(NOT TO SCALE)



PROJECT LOCATION MAP
(NOT TO SCALE)

LEGEND

- 1605 — EXISTING GROUND CONTOURS
- 1604 — EXISTING GROUND CONTOURS
- 1610 — FINISHED GRADE CONTOURS
- 1609 — FINISHED GRADE CONTOURS
- × 1677.6 FINISHED GRADE SPOT ELEVATION
- - - - - PROPERTY BOUNDARY
- - - - - POND EXCAVATION EXTENTS
- △ CONTROL POINT

APPLICABLE PERMITS

- REGIONAL WATER QUALITY CONTROL BOARD - SECTION 401 WASTE DISCHARGE REQUIREMENTS
- U.S. ARMY CORPS OF ENGINEERS - SECTION 404 NATIONWIDE PERMIT
- CALIFORNIA DEPT. OF FISH AND WILDLIFE - LAKE AND STREAMBED ALTERATION AGREEMENT
- SAN MATEO RCD - GRADING PERMIT EXEMPTION
- U.S. FISH AND WILDLIFE SECTION 10 RECOVERY PERMIT

GENERAL NOTES:

1. PROJECT PERSONNEL SHALL ADHERE TO THE CONDITIONS OF THE LONGTERM CONSULTANTS/CONSTRUCTION/MAINTENANCE PERMIT 20128.
2. WORK IS TO BE CONDUCTED IN PUBLIC SPACE OPEN AREA. CONDUCT ALL PROJECT ACTIVITIES IN AN APPROPRIATE MANNER.
3. THE CONTRACTOR IS RESPONSIBLE FOR COORDINATING THIS PROJECT WORK WITH OTHER WORK BEING PERFORMED ON OR ADJACENT TO THE PROJECT SITE.
4. ALLOWABLE WORKING TIMES ARE LIMITED TO MONDAY THROUGH FRIDAY FROM 7 A.M. TO 5 P.M., EXCLUDING HOLIDAYS, EXCEPT AS EXPRESSLY PROVIDED IN THE SCOPE OF SERVICES, OR AS AUTHORIZED IN ADVANCE BY MIDPENINSULA REGIONAL OPEN SPACE DISTRICT.
5. CONTRACTOR MUST PROVIDE NOTIFICATIONS TO ADJACENT PROPERTY OWNERS AS REQUIRED BY LAW. CONTRACTOR SHALL MARK ADJACENT PROPERTY LINES BEFORE CONSTRUCTION BEGINS AND CONTAIN ALL CONSTRUCTION ACTIVITY TO THE PROJECT PROPERTY.
6. CONTRACTOR SHALL CALL UNDERGROUND SERVICES ALERT AT (800) 642-2444 AT LEAST TWO (2) WORKING DAYS, BUT NOT MORE THAN FOURTEEN (14) CALENDAR DAYS BEFORE STARTING EXCAVATION IF EXCAVATION WILL BE CONDUCTED IN AN AREA THAT IS KNOWN, OR REASONABLY SHOULD BE KNOWN TO CONTAIN SUBSURFACE INSTALLATIONS. IF PRACTICAL, THE CONTRACTOR MUST DELINEATE THE EXCAVATION AREA WITH WHITE PAINT OR OTHER SUITABLE MARKINGS.
7. BEFORE THE START OF ANY MOBILIZATION OPERATIONS AT THE SITE, THE CONTRACTOR WILL REVIEW AND BE FAMILIAR WITH LOCATIONS AND BOUNDARIES OF ALL PROPERTY LINES AND EASEMENTS SHOWN IN THE PLANS.
8. THE CONTRACTOR SHALL PROTECT IN PLACE EXISTING INFRASTRUCTURE ON THE PROJECT SITE AND ACCESS ROADS TO THE SITE. IF EXISTING INFRASTRUCTURE IS ALTERED OR DAMAGED BY THE CONTRACTOR DURING PROJECT CONSTRUCTION, THE CONTRACTOR SHALL RESTORE THE INFRASTRUCTURE TO ITS PRE-CONSTRUCTION CONDITION.
9. CONTOURS SHOWN ARE APPROXIMATE AND REFLECT BEST AVAILABLE SURVEY AND REMOTELY SENSED TOPOGRAPHIC DATA. ALL VERTICAL ELEVATIONS ARE PROVIDED IN FEET AND REFERENCED TO BENCHMARKS PROVIDED BY IFLAND SURVEY.
10. LINWORK SHOWN (EXISTING ROADS, FENCES, ETC.) IS APPROXIMATE AND CORRESPONDS TO KNOWN INFRASTRUCTURE AND OBSERVED CONDITIONS.

GENERAL NOTES CONTINUE ON SHEET C12.

FIRE PREVENTION NOTES:

1. FIRE PREVENTION: HIGH RISK OPERATIONS, INCLUDING FLAILING, DISKING, GRADING IN HEAVY BRUSH, OPERATING A MOWER OR BRUSH CUTTER EQUIPPED WITH METAL BLADES, GRINDING OR ANY OPERATION THAT COULD START A FIRE WITHIN OR ADJACENT TO ANY WILDLAND AREAS SHALL NOT OCCUR DURING A RED FLAG EVENT OR WITHIN 24 HOURS OF A PREDICTED RED FLAG EVENT.
2. IN THE EVENT OF A FIRE, THE CONTRACTOR MUST IMMEDIATELY CONTACT MOUNTAIN VIEW DISPATCH AT (650) 968-4411 AND THE CALIFORNIA DEPARTMENT OF FORESTRY AT (831) 335-9113, AND MUST NOTIFY THE MIDPENINSULA REGIONAL OPEN SPACE DISTRICT REPRESENTATIVE.

CONTACTS

HANFORD ARC cbec, inc. MIDPENINSULA REGIONAL OPEN SPACE DISTRICT	MARK CEDERBORG CHRIS HAMMERSMARK ZACHARY ALEXANDER	MARK@HANFORDARC.COM C.HAMMERSMARK@CBECEOENG.COM ZALEXANDER@OPENSOURCE.ORG	(707) 975-3105 (916) 668-5234 (530) 520-0450
---	--	---	--

CONTOURS AND ELEVATIONS SHOWN ON PLANS CONSIST OF SAN MATEO COUNTY LIDAR SUPPLEMENTED WITH CBEC'S SITE TOPOGRAPHY COLLECTED IN SEPTEMBER 2018. CBEC SITE SURVEY OF UPPER SPRING AND KNUEDLER LAKE WAS TIED INTO BENCHMARKS ESTABLISHED BY IFLAND SURVEY. ELEVATIONS ARE BASED ON NORTH AMERICAN VERTICAL DATUM 1988, GEOID 12B. THE PROJECTION IS NORTH AMERICAN DATUM 1983, STATE PLANE CALIFORNIA ZONE III U.S. SURVEY FT.

GRADING QUANTITIES		
SITE	CUT (CY)	FILL (CY)
UPPER SPRING	75	75
KNUEDLER POND	525	525
TOTAL	600	600

ABBREVIATIONS

DIA	DIAMETER
EL/ELEV	ELEVATION
MAX	MAXIMUM
MIN	MINIMUM
TOB	TOP OF BERM/TOP OF BANK
TYP	TYPICAL
WSE	WATER SURFACE ELEVATION

NOTE: DESIGNS WERE PREPARED UNDER THE DIRECTION OF CHRIS HAMMERSMARK, PE #66595.

Site Control Table			
Point #	Northing	Easting	Elevation
1	1941674.7	6059213.4	1706.40
2	1941443.2	6059253.2	1720.75
3	1941594.2	6059399.8	1726.57
4	1941739.9	6058854.3	1644.84
5	1938335.7	6055155.3	1030.01
6	1938216.7	6055211.7	1022.88
7	1938327.5	6055253.0	1050.99
8	1938244.8	6055293.2	1044.72

Sheet List Table	
Sheet Number	Sheet Title
C1	COVER SHEET
C2	EXISTING CONDITIONS (UPPER SPRING)
C3	EXISTING CONDITIONS (KNUEDLER LAKE)
C4	ACCESS AND STAGING (UPPER SPRING)
C5	ACCESS AND STAGING (KNUEDLER LAKE)
C6	GRADING PLAN (UPPER SPRING)
C7	GRADING PLAN (KNUEDLER LAKE)
C8	EROSION AND SEDIMENT CONTROL PLAN (UPPER SPRING)
C9	EROSION AND SEDIMENT CONTROL PLAN (KNUEDLER LAKE)
C10	TYPICAL SECTIONS
C11	DETAILS
C12	NOTES

USE OF DOCUMENTS INCLUDING THIS DESIGN INSTRUMENT OF SERVICE FOR THIS PROJECT AND SHALL NOT BE USED FOR ANY OTHER PROJECT WITHOUT THE WRITTEN AUTHORIZATION OF cbec, inc.

DESIGNED	AS	DOCUMENT RELEASE
DRAWN	JP	65% DRAFT
REVIEWED	SD	REVISION NOTES
APPROVED		



PREPARED BY:
MIDPENINSULA REGIONAL
OPEN SPACE DISTRICT
330 DISTEL CIRCLE
LOS ALTOS, CA 94022-1404
(650) 691-1200



CLIENT:
CALIFORNIA
MIDPENINSULA REGIONAL
OPEN SPACE DISTRICT

CALIFORNIA
SAN MATEO COUNTY
MINDEGO RANCH
PONDS ENHANCEMENT PROJECT
COVER SHEET

JOB NUMBER
18-1019

DATE
SEP 2019

SHEET
C1
1 OF 12

**PRELIMINARY DESIGN
NOT FOR CONSTRUCTION**

APN: 080-340-010

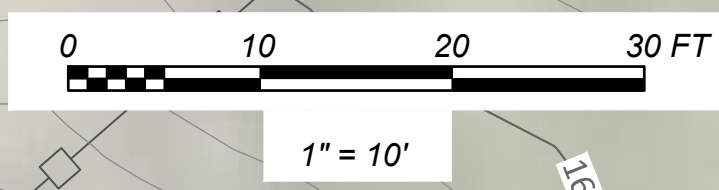
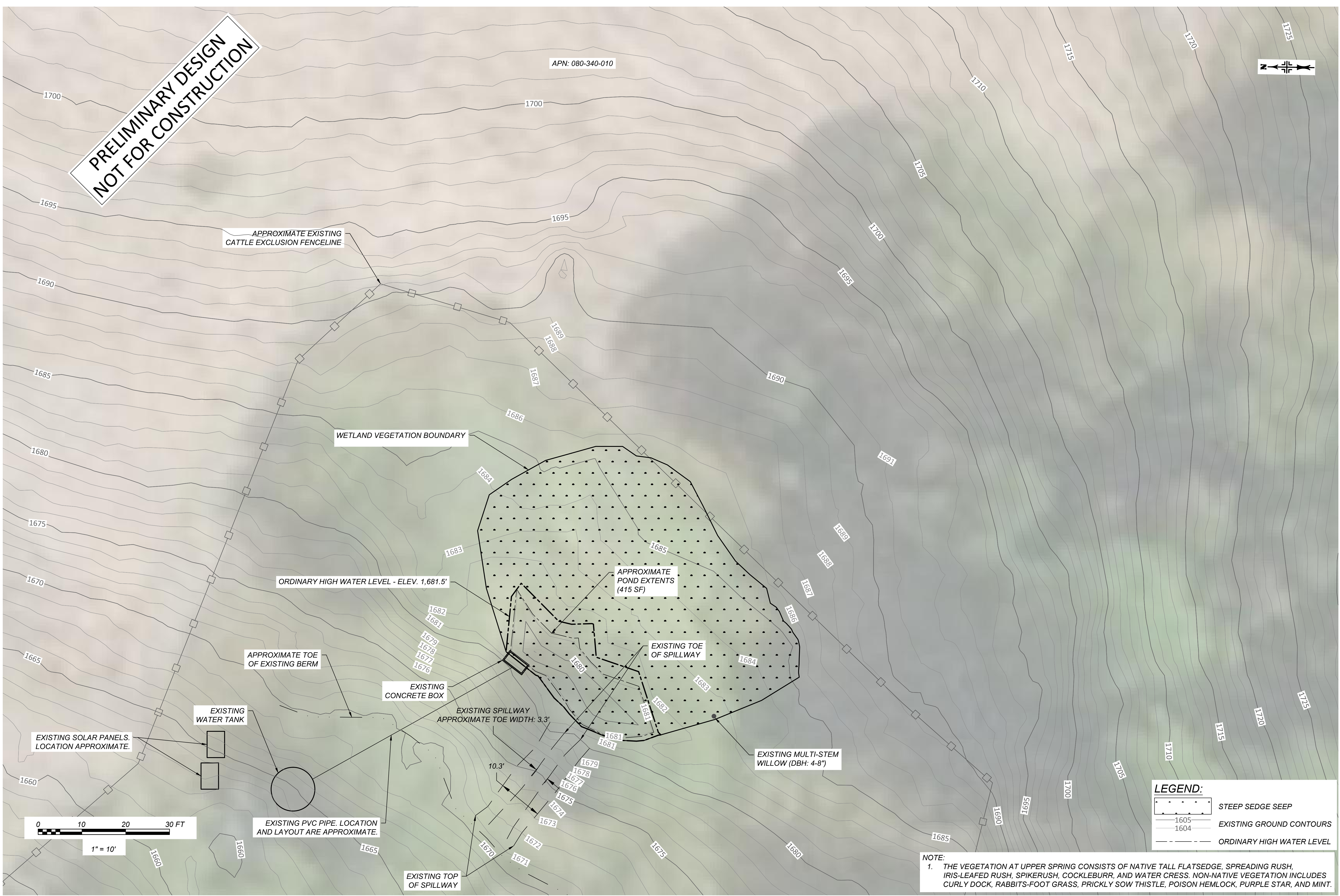


1

2

3

4



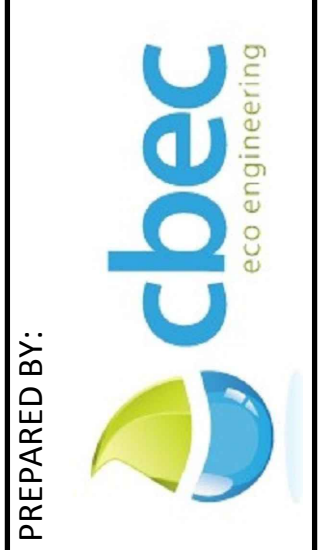
LEGEND:

	STEEP SEDGE SEEP
	EXISTING GROUND CONTOURS
	ORDINARY HIGH WATER LEVEL

NOTE:
1. THE VEGETATION AT UPPER SPRING CONSISTS OF NATIVE TALL FLATSEDGE, SPREADING RUSH, IRIS-LEAFED RUSH, SPIKERUSH, COCKLEBURR, AND WATER CRESS. NON-NATIVE VEGETATION INCLUDES CURLY DOCK, RABBITS-FOOT GRASS, PRICKLY SOW THISTLE, POISON HEMLOCK, PURPLE STAR, AND MINT.

USE OF DOCUMENTS INCLUDING THIS DESIGN INSTRUMENT OF SERVICE FOR THIS PROJECT AND SHALL NOT BE USED FOR ANY OTHER WRITTEN AUTHORIZATION OF cbec, inc.

DESIGNED	AS	DOCUMENT RELEASE	65% DRAFT
DRAWN	JP	REVISION NOTES	
REVIEWED	SD		
APPROVED			



PREPARED BY:
**MIDPENINSULA REGIONAL
OPEN SPACE DISTRICT**
330 DISTEL CIRCLE
LOS ALTOS, CA 94022-1404
(650) 691-1200



CLIENT: CALIFORNIA

SAN MATEO COUNTY
**MINDEGO RANCH
PONDS ENHANCEMENT PROJECT**
EXISTING CONDITIONS (UPPER SPRING)

JOB NUMBER
18-1019

DATE
SEP 2019

SHEET
C2
2 OF 12



**PRELIMINARY DESIGN
NOT FOR CONSTRUCTION**

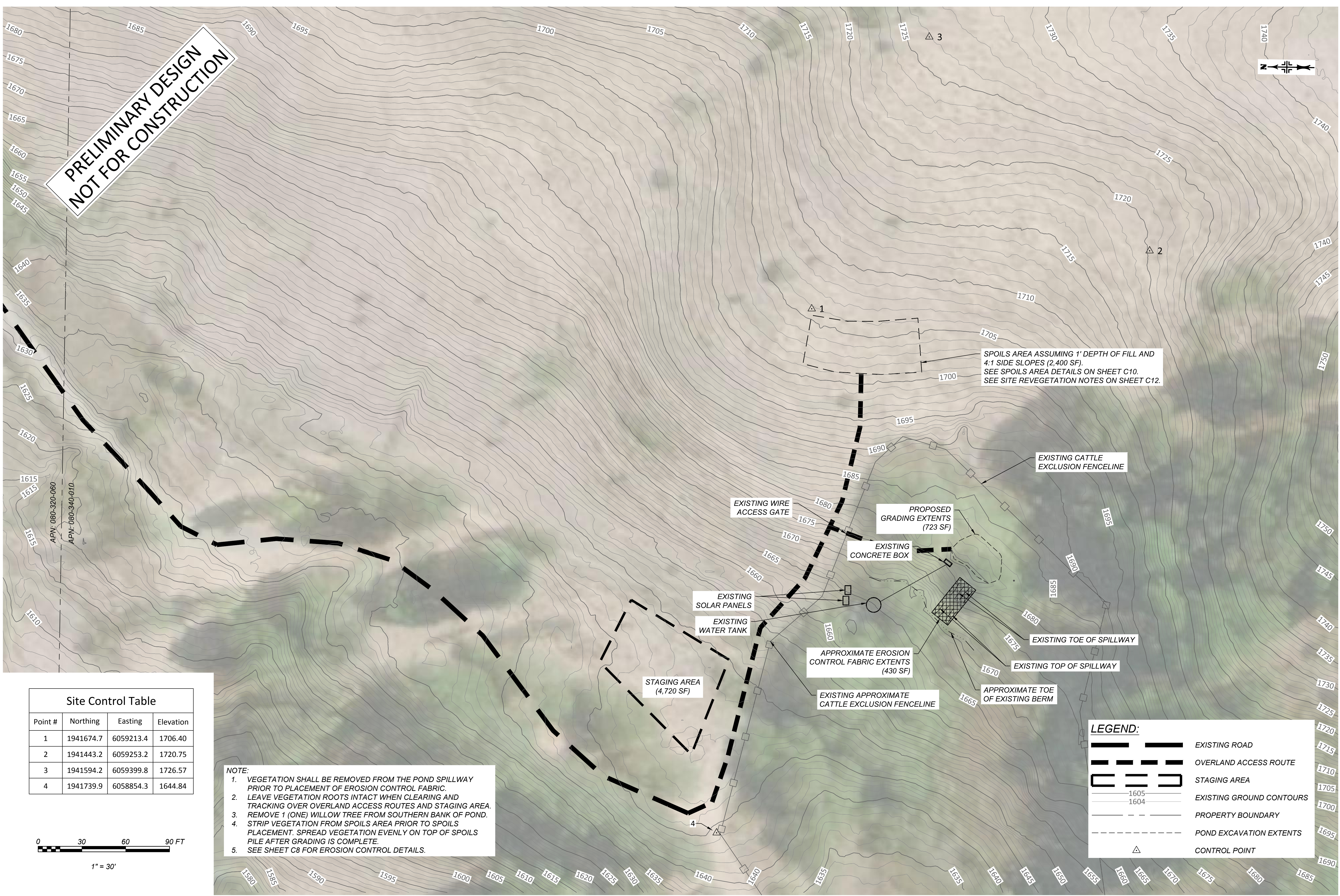
LEGEND:

	BUR-REED DOMINANT MARSH
	SEASONAL WETLAND - SOFT RUSH/PENNYROYAL/DOCK
	WETLAND - SEDGE/RUSH MIX
	EXISTING GROUND CONTOURS
	PROPERTY BOUNDARY

NOTE:
1. VEGETATION WITHIN POND IS COMPOSED PRIMARILY OF TULE AND CATTAILS. VEGETATION OUTSIDE OF THE POND IS COMPOSED PRIMARILY OF GRASSES AND SHRUBS. SEE THE "SAN FRANCISCO GARTER SNAKE HABITAT MANAGEMENT PLAN, MINDEGO RANCH, RUSSIAN RIDGE OPEN SPACE PRESERVE, SAN MATEO COUNTY, CALIFORNIA" FOR FURTHER DETAILS REGARDING SITE VEGETATION.

<p>USE OF DOCUMENTS: THIS DOCUMENT, INCLUDING THIS INSTRUMENT OF SERVICE FOR THIS PROJECT AND SHALL NOT BE USED FOR ANY OTHER WRITTEN AUTHORIZATION OF cbec, inc.</p>			
DESIGNED	AS	DOCUMENT RELEASE	65% DRAFT
DRAWN	JP	REVISION NOTES	
REVIEWED	SD		
APPROVED			
<p>PREPARED BY: </p>			
<p>MIDPENINSULA REGIONAL OPEN SPACE DISTRICT 330 DISTEL CIRCLE LOS ALTOS, CA 94022-1404 (650) 691-1200</p>			
<p>CLIENT: </p>			
<p>SAN MATEO COUNTY CALIFORNIA MINDEGO RANCH PONDS ENHANCEMENT PROJECT EXISTING CONDITIONS (KNUEDLER LAKE)</p>			
JOB NUMBER	18-1019		
DATE	SEP 2019		
SHEET	C3		
	3 OF 12		

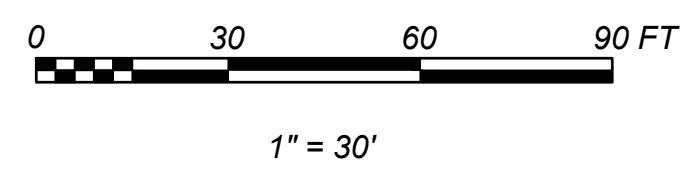
**PRELIMINARY DESIGN
NOT FOR CONSTRUCTION**



Site Control Table

Point #	Northing	Easting	Elevation
1	1941674.7	6059213.4	1706.40
2	1941443.2	6059253.2	1720.75
3	1941594.2	6059399.8	1726.57
4	1941739.9	6058854.3	1644.84

- NOTE:**
1. VEGETATION SHALL BE REMOVED FROM THE POND SPILLWAY PRIOR TO PLACEMENT OF EROSION CONTROL FABRIC.
 2. LEAVE VEGETATION ROOTS INTACT WHEN CLEARING AND TRACKING OVER OVERLAND ACCESS ROUTES AND STAGING AREA.
 3. REMOVE 1 (ONE) WILLOW TREE FROM SOUTHERN BANK OF POND.
 4. STRIP VEGETATION FROM SPOILS AREA PRIOR TO SPOILS PLACEMENT. SPREAD VEGETATION EVENLY ON TOP OF SPOILS PILE AFTER GRADING IS COMPLETE.
 5. SEE SHEET C8 FOR EROSION CONTROL DETAILS.



LEGEND:

- EXISTING ROAD
- OVERLAND ACCESS ROUTE
- STAGING AREA
- EXISTING GROUND CONTOURS
- PROPERTY BOUNDARY
- POND EXCAVATION EXTENTS
- CONTROL POINT

USE OF DOCUMENTS:
THIS DOCUMENT, INCLUDING THIS INSTRUMENT OF SERVICE FOR THIS PROJECT AND SHALL NOT BE USED FOR ANY OTHER WRITTEN AUTHORIZATION OF cbec, inc.

DOCUMENT RELEASE: 65% DRAFT

DESIGNED: AS
DRAWN: JP
REVIEWED: SP
APPROVED: [Signature]

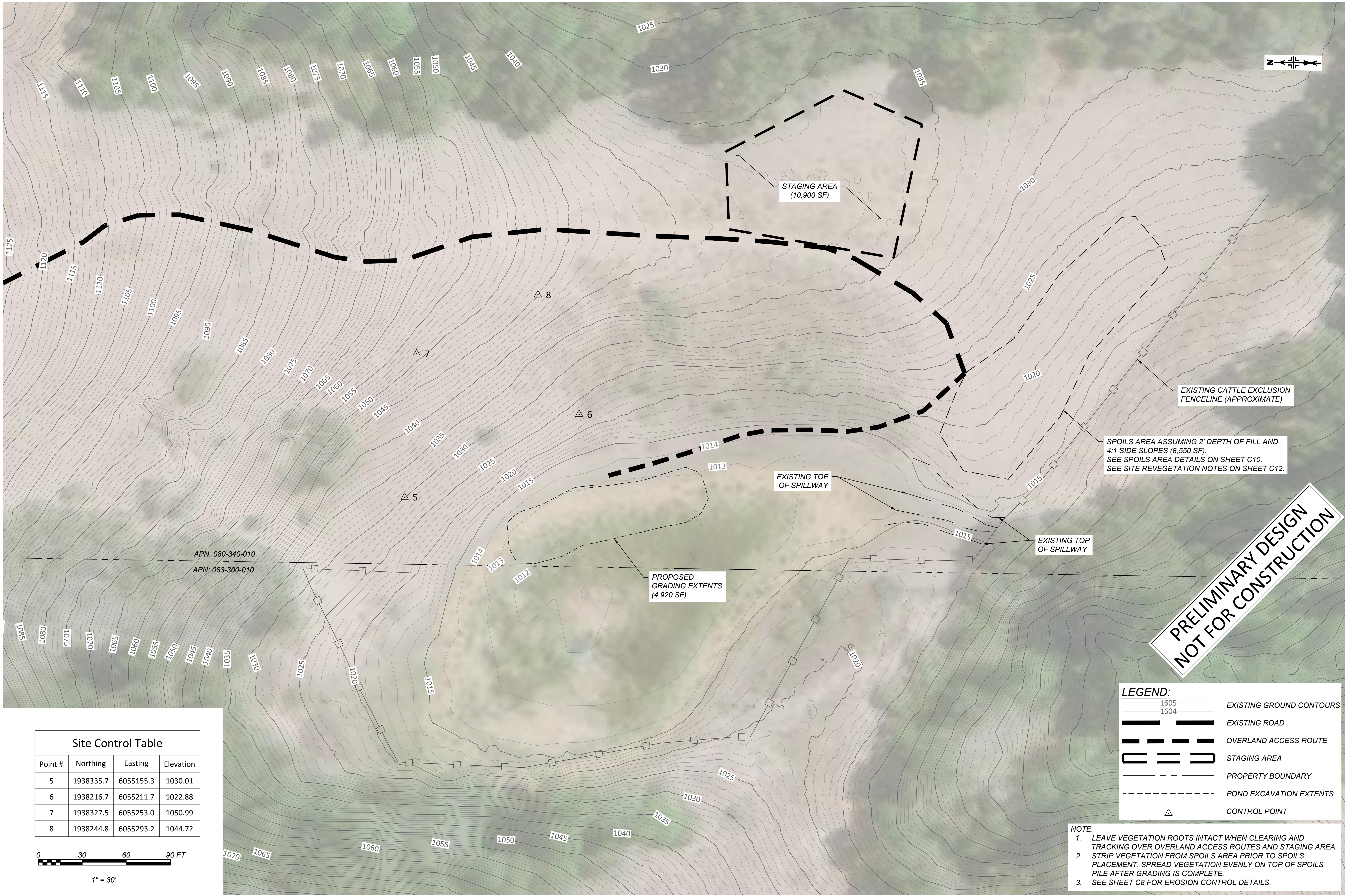
PREPARED BY: **cbec**
eco engineering

CLIENT: **MIDPENINSULA REGIONAL OPEN SPACE DISTRICT**
330 DISTEL CIRCLE
LOS ALTOS, CA 94022-1404
(650) 691-1200

CALIFORNIA: **MIDPENINSULA REGIONAL OPEN SPACE**

SAN MATEO COUNTY: **MINDEGO RANCH PONDS ENHANCEMENT PROJECT**
ACCESS AND STAGING (UPPER SPRING)

JOB NUMBER: 18-1019
DATE: SEP 2019
SHEET: **C4**
4 OF 12



Site Control Table			
Point #	Northing	Easting	Elevation
5	1938335.7	6055155.3	1030.01
6	1938216.7	6055211.7	1022.88
7	1938327.5	6055253.0	1050.99
8	1938244.8	6055293.2	1044.72

LEGEND:

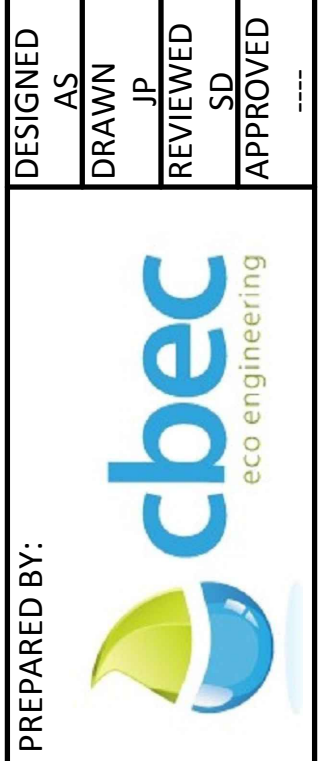
	1605	EXISTING GROUND CONTOURS
	1604	EXISTING ROAD
		OVERLAND ACCESS ROUTE
		STAGING AREA
		PROPERTY BOUNDARY
		POND EXCAVATION EXTENTS
		CONTROL POINT

NOTE:

1. LEAVE VEGETATION ROOTS INTACT WHEN CLEARING AND TRACKING OVER OVERLAND ACCESS ROUTES AND STAGING AREA.
2. STRIP VEGETATION FROM SPOILS AREA PRIOR TO SPOILS PLACEMENT. SPREAD VEGETATION EVENLY ON TOP OF SPOILS PILE AFTER GRADING IS COMPLETE.
3. SEE SHEET C8 FOR EROSION CONTROL DETAILS.

USE OF DOCUMENTS
THIS DOCUMENT, INCLUDING
THIS INSTRUMENT
OF SERVICE FOR THIS
PROJECT AND SHALL NOT BE
USED FOR ANY OTHER
PROJECT WITHOUT THE
WRITTEN AUTHORIZATION
OF cbec, inc.

DOCUMENT RELEASE	
DESIGNED	AS
DRAWN	JP
REVIEWED	SD
APPROVED	



PREPARED BY:
MIDPENINSULA REGIONAL
OPEN SPACE DISTRICT
330 DISTEL CIRCLE
LOS ALTOS, CA 94022-1404
(650) 691-1200



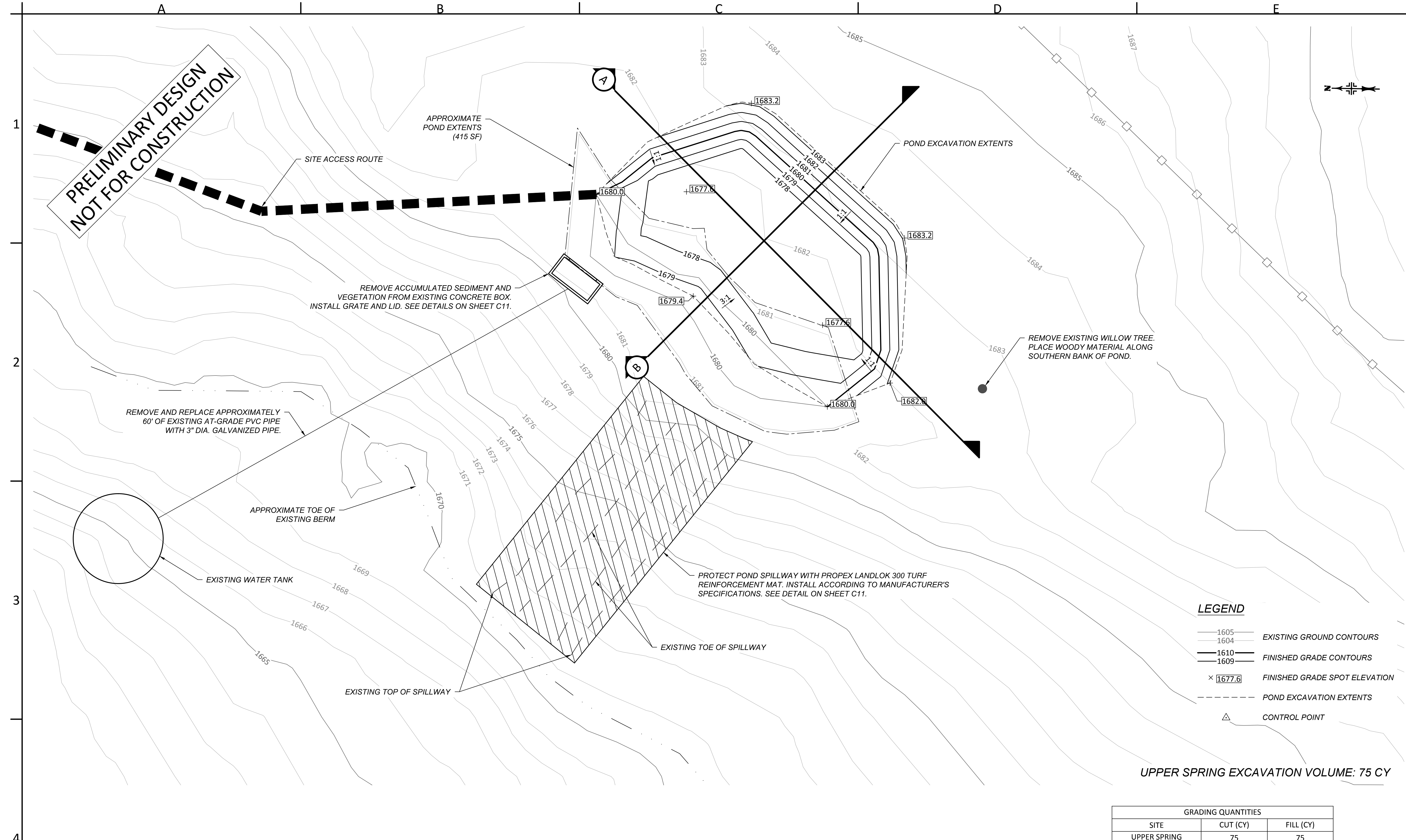
CLIENT:

CALIFORNIA
SAN MATEO COUNTY
MINDEGO RANCH
PONDS ENHANCEMENT PROJECT
ACCESS AND STAGING (KNUEDLER LAKE)

JOB NUMBER
18-1019

DATE
SEP 2019

SHEET
C5
5 OF 12




GRADING QUANTITIES		
SITE	CUT (CY)	FILL (CY)
UPPER SPRING	75	75


- NOTE:**
- POND EXCAVATION IS INTENDED TO CREATE ADDITIONAL OPEN WATER TO PROVIDE HABITAT FOR CALIFORNIA RED-LEGGED FROGS AND SAN FRANCISCO GARTER SNAKES.
 - LIMIT CONSTRUCTION ACTIVITY TO WORK AREAS, ACCESS ROUTES, AND SPOILS AREA SHOWN ON THIS SHEET AND ON SHEET C4.
 - GRADING EXTENTS SHOWN REPRESENT ANTICIPATED DESIGN. MODIFICATIONS MAY BE MADE IN FIELD TO ADAPT TO SUBSURFACE CONDITIONS. IF NECESSARY, REMOVE EQUAL VOLUME OVER EXPANDED AREA NOT TO EXCEED 950 SF.
 - PLACE EXCAVATED MATERIAL IN SPOILS AREA AS SHOWN ON SHEET C4. MOISTURE CONDITION ALL FILL 3-5% OVER OPTIMUM AND COMPACT TO A MINIMUM OF 80% RELATIVE COMPACTION.
 - SEE SPOILS AREA DETAILS ON SHEET C10. REFER TO UPPER SPRING REVEGETATION PLAN FOR PLANTING DETAILS.
 - SECTION VIEWS ARE SHOWN ON SHEET C10.
 - EROSION CONTROL FABRIC DETAILS ARE SHOWN ON SHEET C11.

**PRELIMINARY DESIGN
NOT FOR CONSTRUCTION**

USE OF DOCUMENTS:
THIS DOCUMENT, INCLUDING THIS INSTRUMENT OF SERVICE FOR THIS PROJECT AND SHALL NOT BE USED FOR ANY OTHER PROJECT WITHOUT THE WRITTEN AUTHORIZATION OF cbec, inc.

DESIGNED	AS	DOCUMENT RELEASE	65% DRAFT
DRAWN	JP	REVISION NOTES	
REVIEWED	SD		
APPROVED			

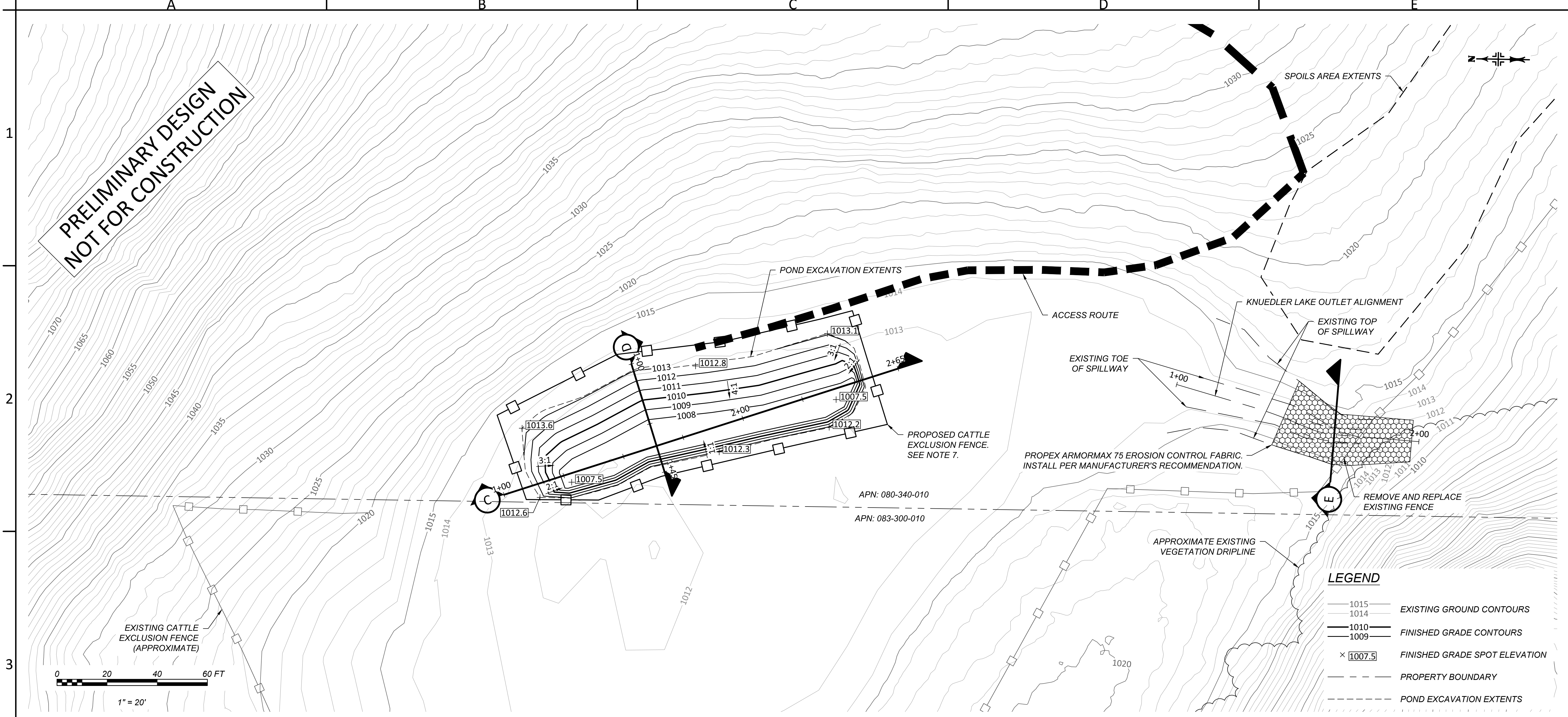
PREPARED BY:  **cbec**
eco engineering

CLIENT:  **MIDPENINSULA REGIONAL
OPEN SPACE DISTRICT**
330 DISTEL CIRCLE
LOS ALTOS, CA 94022-1404
(650) 691-1200

CALIFORNIA
SAN MATEO COUNTY
**MINDEGO RANCH
PONDS ENHANCEMENT PROJECT**
GRADING PLAN (UPPER SPRING)

JOB NUMBER: 18-1019
DATE: SEP 2019
SHEET: **C6**
6 OF 12

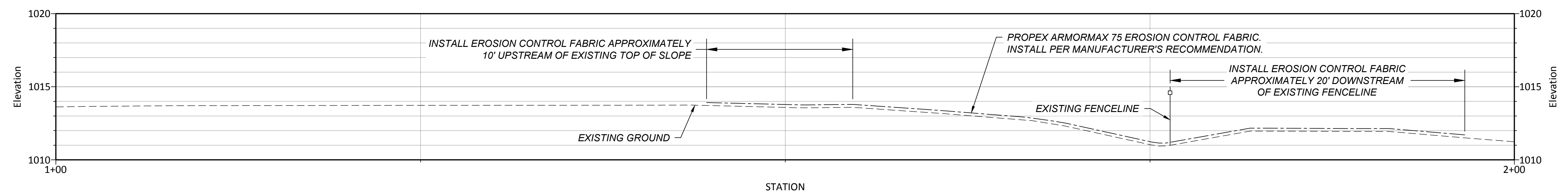
**PRELIMINARY DESIGN
NOT FOR CONSTRUCTION**



LEGEND

— 1015	EXISTING GROUND CONTOURS
— 1014	EXISTING GROUND CONTOURS
— 1010	FINISHED GRADE CONTOURS
— 1009	FINISHED GRADE CONTOURS
× 1007.5	FINISHED GRADE SPOT ELEVATION
- - -	PROPERTY BOUNDARY
- - -	POND EXCAVATION EXTENTS

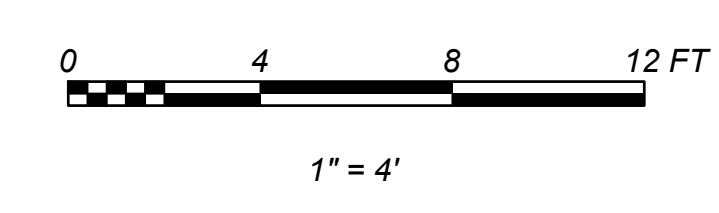
KNUEDLER LAKE EXCAVATION VOLUME: 525 CY



KNUEDLER LAKE OUTLET PROFILE
SCALE: 1" = 4'

- NOTE:**
- POND EXCAVATION IS INTENDED TO CREATE ADDITIONAL OPEN WATER TO PROVIDE HABITAT FOR CALIFORNIA RED-LEGGED FROGS, SAN FRANCISCO GARTER SNAKES, AND WESTERN POND TURTLES.
 - LIMIT CONSTRUCTION ACTIVITY TO WORK AREAS, ACCESS ROUTES, AND SPOILS AREA SHOWN HEREON.
 - PLACE EXCAVATED MATERIAL IN SPOILS AREA AS SHOWN ON SHEET C5. MOISTURE CONDITION ALL FILL 3-5% OVER OPTIMUM AND COMPACT TO A MINIMUM OF 80% RELATIVE COMPACTION.
 - SECTION VIEWS ARE SHOWN ON SHEET C10.
 - SEE SPOILS AREA DETAILS ON SHEET C10. REFER TO KNUEDLER LAKE REVEGETATION PLAN FOR PLANTING DETAILS.
 - PLACE FIBER ROLLS AT LOWER EDGE OF SPOILS AREA. EXTEND FIBER ROLLS 10' LATERALLY FROM EXTENT OF SPOILS AREA.
 - CONSTRUCT CATTLE EXCLUSION FENCE USING T-POSTS WITH SMOOTH TOP AND BOTTOM WIRES. USE BARBED WIRE FOR A MINIMUM OF TWO RUNS OF WIRE BETWEEN TOP AND BOTTOM WIRES. SET CORNER POSTS IN CONCRETE. INSERT TWO T-POST BRACES INTO GROUND AT 45 DEGREE ANGLES ON EITHER SIDE OF CORNER POST. ATTACH TOPS OF T-POST BRACES TO CORNER POST USING BAILING WIRE.

GRADING QUANTITIES		
SITE	CUT (CY)	FILL (CY)
KNUEDLER LAKE	525	525



USE OF DOCUMENTS:
THIS DOCUMENT, INCLUDING THIS INSTRUMENT OF SERVICE FOR THIS PROJECT AND SHALL NOT BE USED FOR ANY OTHER PROJECT WITHOUT THE WRITTEN AUTHORIZATION OF cbec, inc.

DESIGNED	AS	DOCUMENT RELEASE	65% DRAFT
DRAWN	JP	REVISION NOTES	
REVIEWED	SD	APPROVED	

PREPARED BY: **cbec** eco engineering

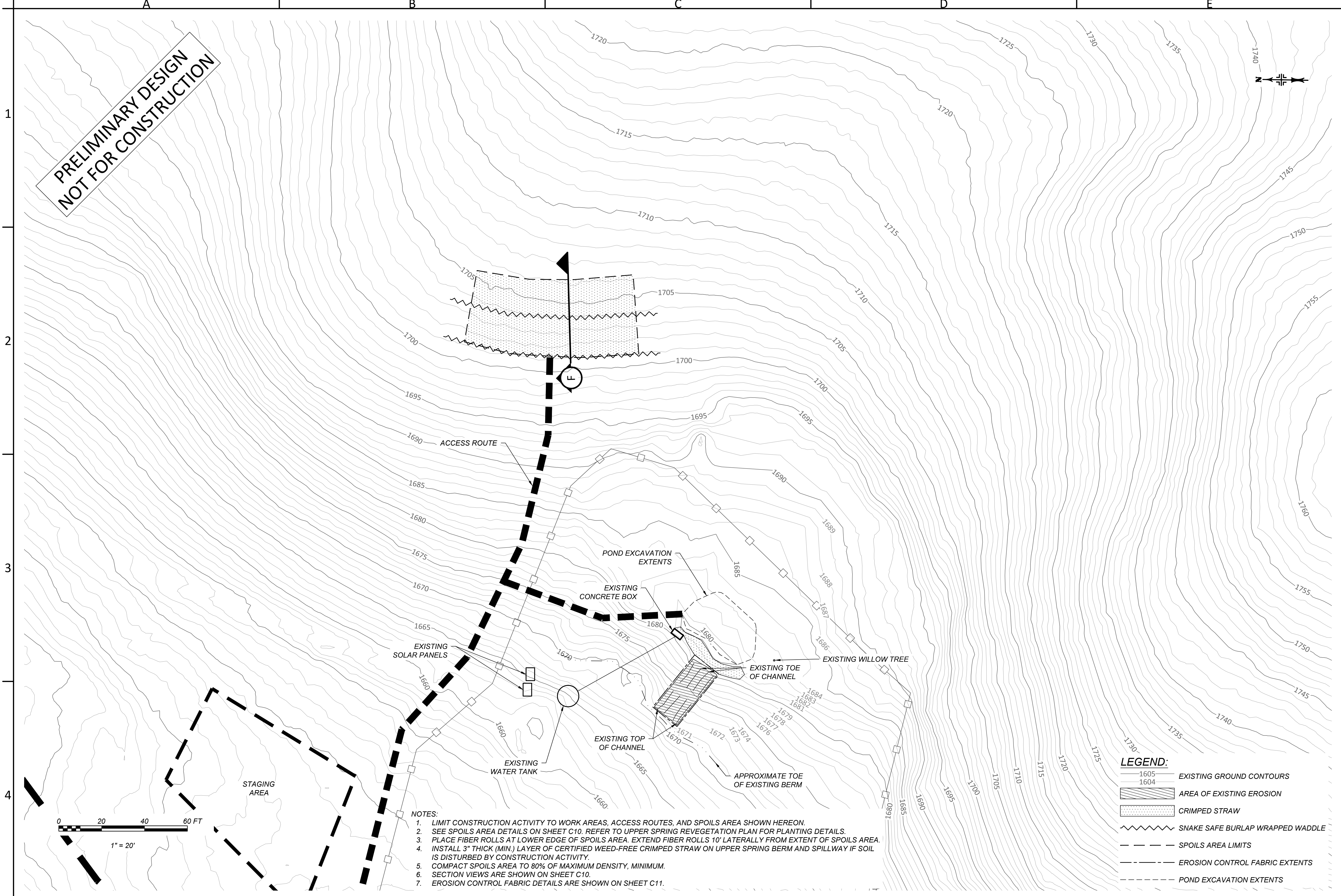
MIDPENINSULA REGIONAL OPEN SPACE DISTRICT
330 DISTEL CIRCLE
LOS ALTOS, CA 94022-1404
(650) 691-1200

CLIENT: **OPEN SPACE**

CALIFORNIA CLIENT: **MINDEGO RANCH PONDS ENHANCEMENT PROJECT GRADING PLAN (KNUEDLER LAKE)**

SAN MATEO COUNTY JOB NUMBER: 18-1019
DATE: SEP 2019
SHEET: **C7** OF 12



**PRELIMINARY DESIGN
NOT FOR CONSTRUCTION**

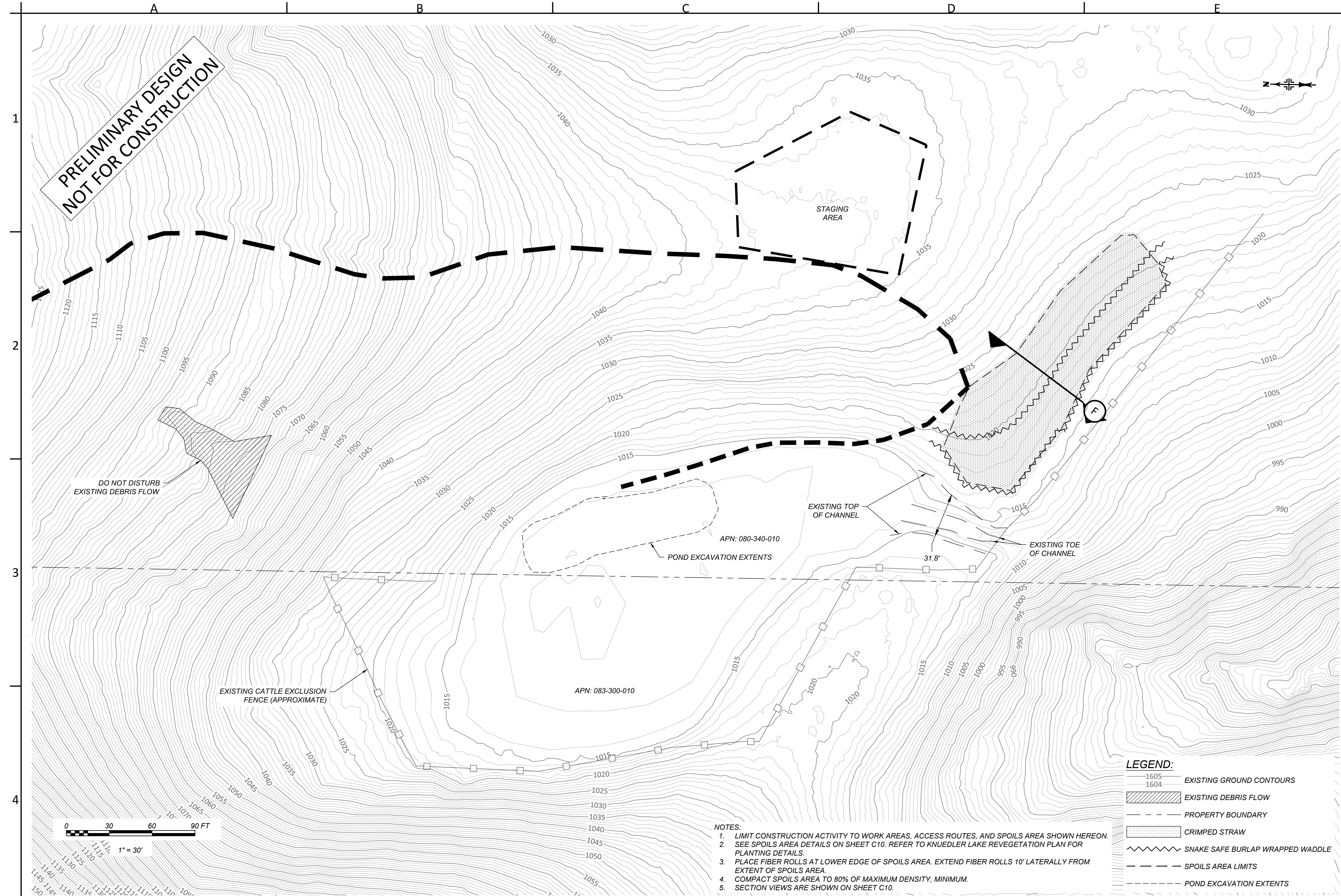


- NOTES:**
1. LIMIT CONSTRUCTION ACTIVITY TO WORK AREAS, ACCESS ROUTES, AND SPOILS AREA SHOWN HEREON.
 2. SEE SPOILS AREA DETAILS ON SHEET C10. REFER TO UPPER SPRING REVEGETATION PLAN FOR PLANTING DETAILS.
 3. PLACE FIBER ROLLS AT LOWER EDGE OF SPOILS AREA. EXTEND FIBER ROLLS 10' Laterally FROM EXTENT OF SPOILS AREA.
 4. INSTALL 3" THICK (MIN.) LAYER OF CERTIFIED WEED-FREE CRIMPED STRAW ON UPPER SPRING BERM AND SPILLWAY IF SOIL IS DISTURBED BY CONSTRUCTION ACTIVITY.
 5. COMPACT SPOILS AREA TO 80% OF MAXIMUM DENSITY, MINIMUM.
 6. SECTION VIEWS ARE SHOWN ON SHEET C10.
 7. EROSION CONTROL FABRIC DETAILS ARE SHOWN ON SHEET C11.

LEGEND:

1605	EXISTING GROUND CONTOURS
1604	EXISTING GROUND CONTOURS
[Hatched Box]	AREA OF EXISTING EROSION
[Dotted Box]	CRIMPED STRAW
[Wavy Line]	SNAKE SAFE BURLAP WRAPPED WADDLE
[Dashed Line]	SPOILS AREA LIMITS
[Dotted Line]	EROSION CONTROL FABRIC EXTENTS
[Dash-dot Line]	POND EXCAVATION EXTENTS

<p>USE OF DOCUMENTS: THIS DOCUMENT, INCLUDING THIS INSTRUMENT OF SERVICE FOR THIS PROJECT AND SHALL NOT BE USED FOR ANY OTHER WRITTEN AUTHORIZATION OF cbec, inc.</p>	
DESIGNED	DOCUMENT RELEASE
AS	65% DRAFT
DRAWN	REVISION NOTES
JP	
REVIEWED	
SP	
APPROVED	
<p>PREPARED BY:</p>  <p>MIDPENINSULA REGIONAL OPEN SPACE DISTRICT 330 DISTEL CIRCLE LOS ALTOS, CA 94022-1404 (650) 691-1200</p>	
<p>CLIENT:</p>  <p>MIDPENINSULA REGIONAL OPEN SPACE DISTRICT 330 DISTEL CIRCLE LOS ALTOS, CA 94022-1404 (650) 691-1200</p>	
SAN MATEO COUNTY	CALIFORNIA
<p>MINDEGO RANCH PONDS ENHANCEMENT PROJECT</p>	
<p>EROSION AND SEDIMENT CONTROL PLAN (UPPER SPRING)</p>	
JOB NUMBER	18-1019
DATE	SEP 2019
SHEET	C8
8 OF 12	



**PRELIMINARY DESIGN
NOT FOR CONSTRUCTION**

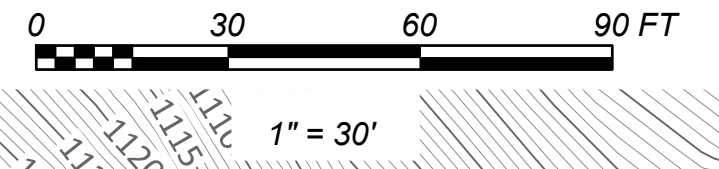
DO NOT DISTURB
EXISTING DEBRIS FLOW

EXISTING CATTLE EXCLUSION
FENCE (APPROXIMATE)

STAGING
AREA

APN: 083-300-010

APN: 080-340-010



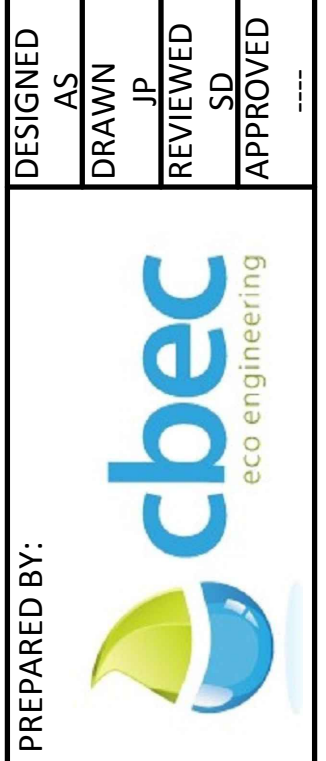
- NOTES:**
1. LIMIT CONSTRUCTION ACTIVITY TO WORK AREAS, ACCESS ROUTES, AND SPOILS AREA SHOWN HEREON.
 2. SEE SPOILS AREA DETAILS ON SHEET C10. REFER TO KNUEDLER LAKE REVEGETATION PLAN FOR PLANTING DETAILS.
 3. PLACE FIBER ROLLS AT LOWER EDGE OF SPOILS AREA. EXTEND FIBER ROLLS 10' Laterally FROM EXTENT OF SPOILS AREA.
 4. COMPACT SPOILS AREA TO 80% OF MAXIMUM DENSITY, MINIMUM.
 5. SECTION VIEWS ARE SHOWN ON SHEET C10.

LEGEND:

1605	EXISTING GROUND CONTOURS
1604	EXISTING GROUND CONTOURS
[Hatched Box]	EXISTING DEBRIS FLOW
[Dashed Line]	PROPERTY BOUNDARY
[Dotted Box]	CRIMPED STRAW
[Wavy Line]	SNAKE SAFE BURLAP WRAPPED WADDLE
[Long Dashed Line]	SPOILS AREA LIMITS
[Short Dashed Line]	POND EXCAVATION EXTENTS

USE OF DOCUMENTS
THIS DOCUMENT, INCLUDING
THIS INSTRUMENT
OF SERVICE FOR THIS
PROJECT AND SHALL NOT BE
USED FOR ANY OTHER
PROJECT WITHOUT THE
WRITTEN AUTHORIZATION
OF cbec, inc.

DESIGNED	AS	DOCUMENT RELEASE	65% DRAFT
DRAWN	JP	REVISION NOTES	
REVIEWED	SD		
APPROVED			



MIDPENINSULA REGIONAL
OPEN SPACE DISTRICT
330 DISTEL CIRCLE
LOS ALTOS, CA 94022-1404
(650) 691-1200



CLIENT:

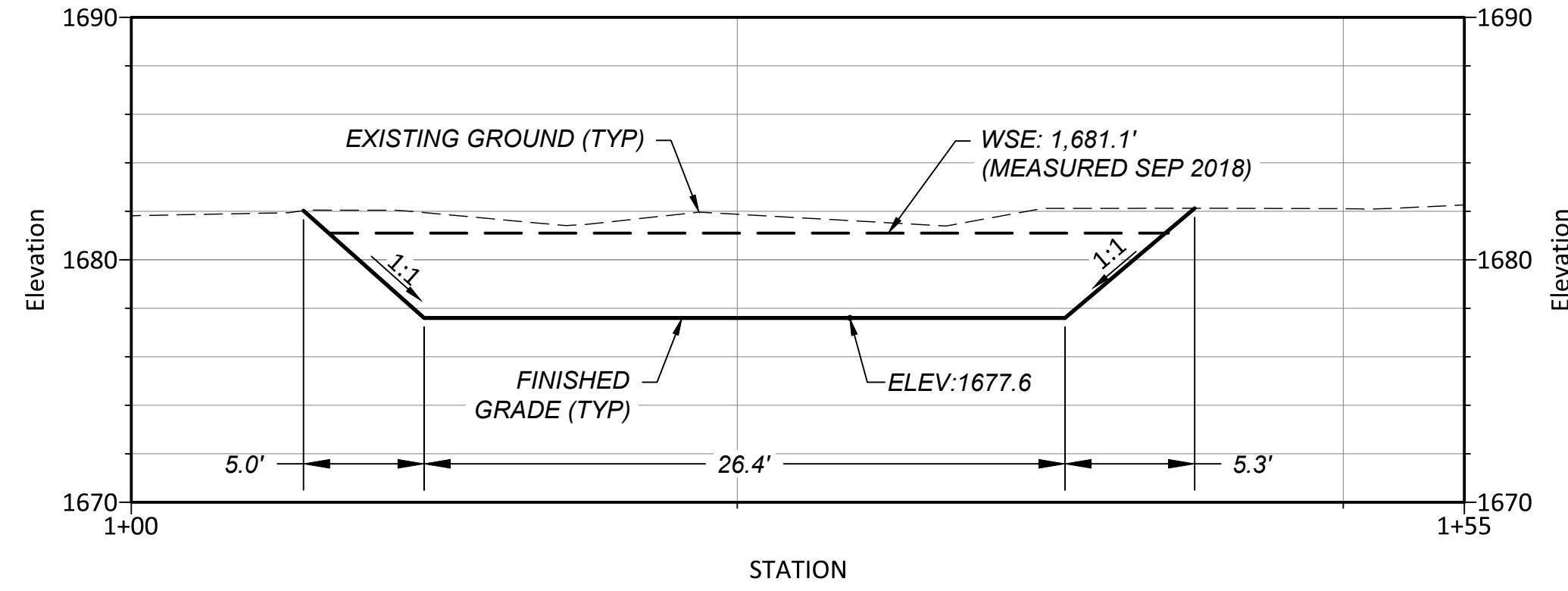
SAN MATEO COUNTY CALIFORNIA
MINDEGO RANCH
POND ENHANCEMENT PROJECT
EROSION AND SEDIMENT CONTROL PLAN (KNUEDLER LAKE)

JOB NUMBER
18-1019

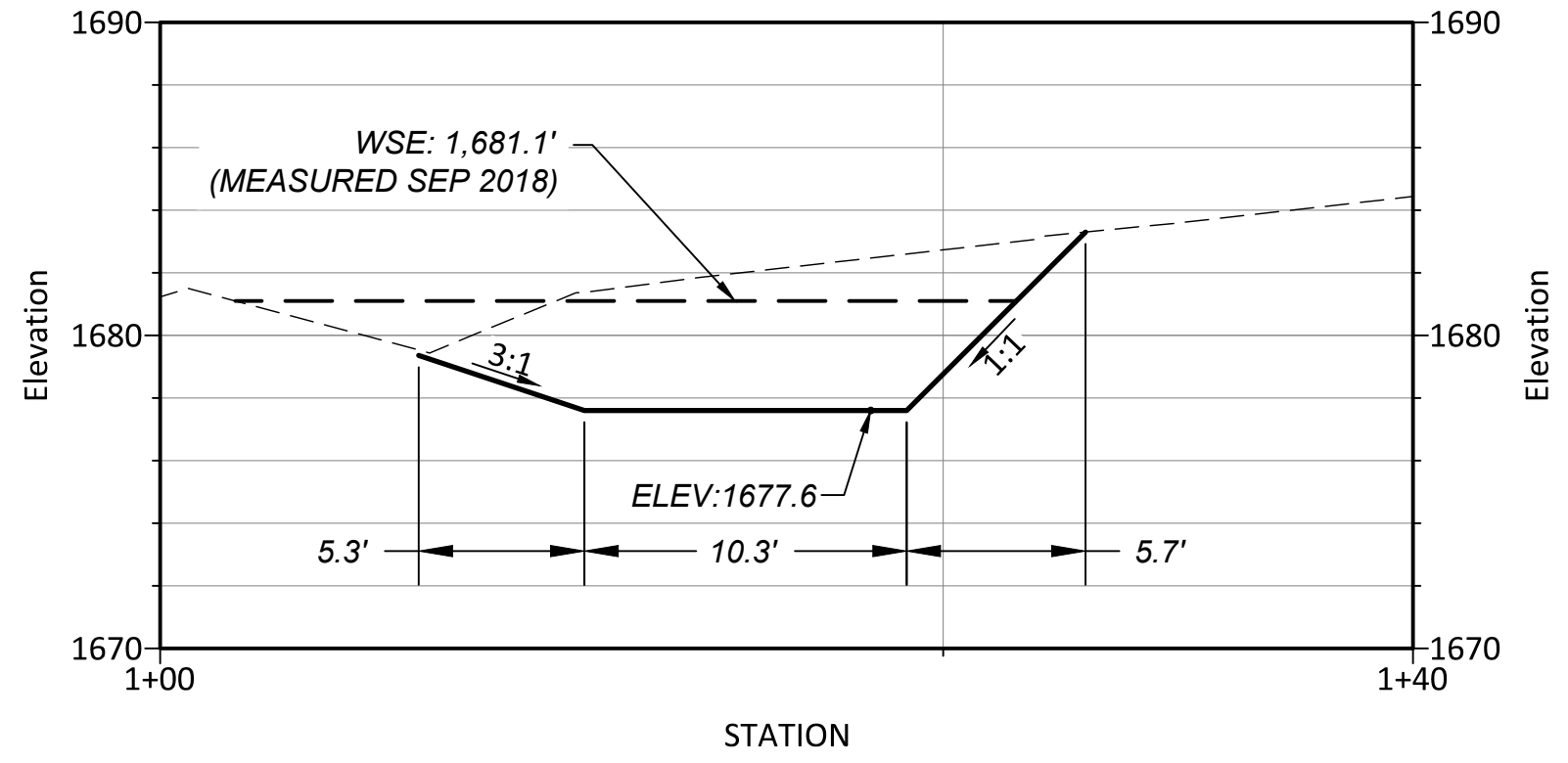
DATE
SEP 2019

SHEET
C9
9 OF 12

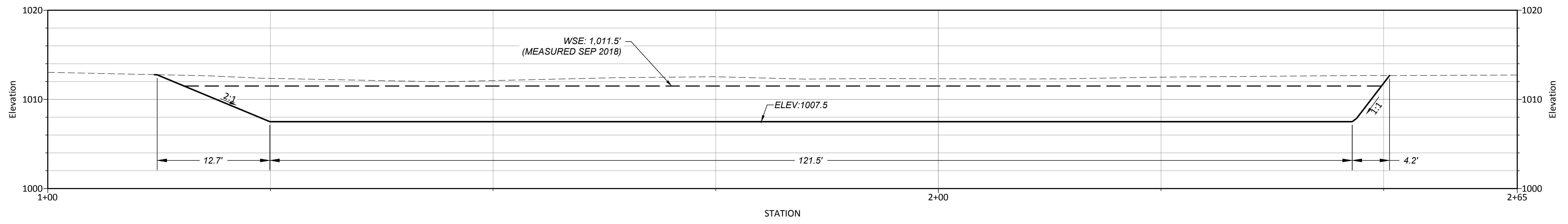
**PRELIMINARY DESIGN
NOT FOR CONSTRUCTION**



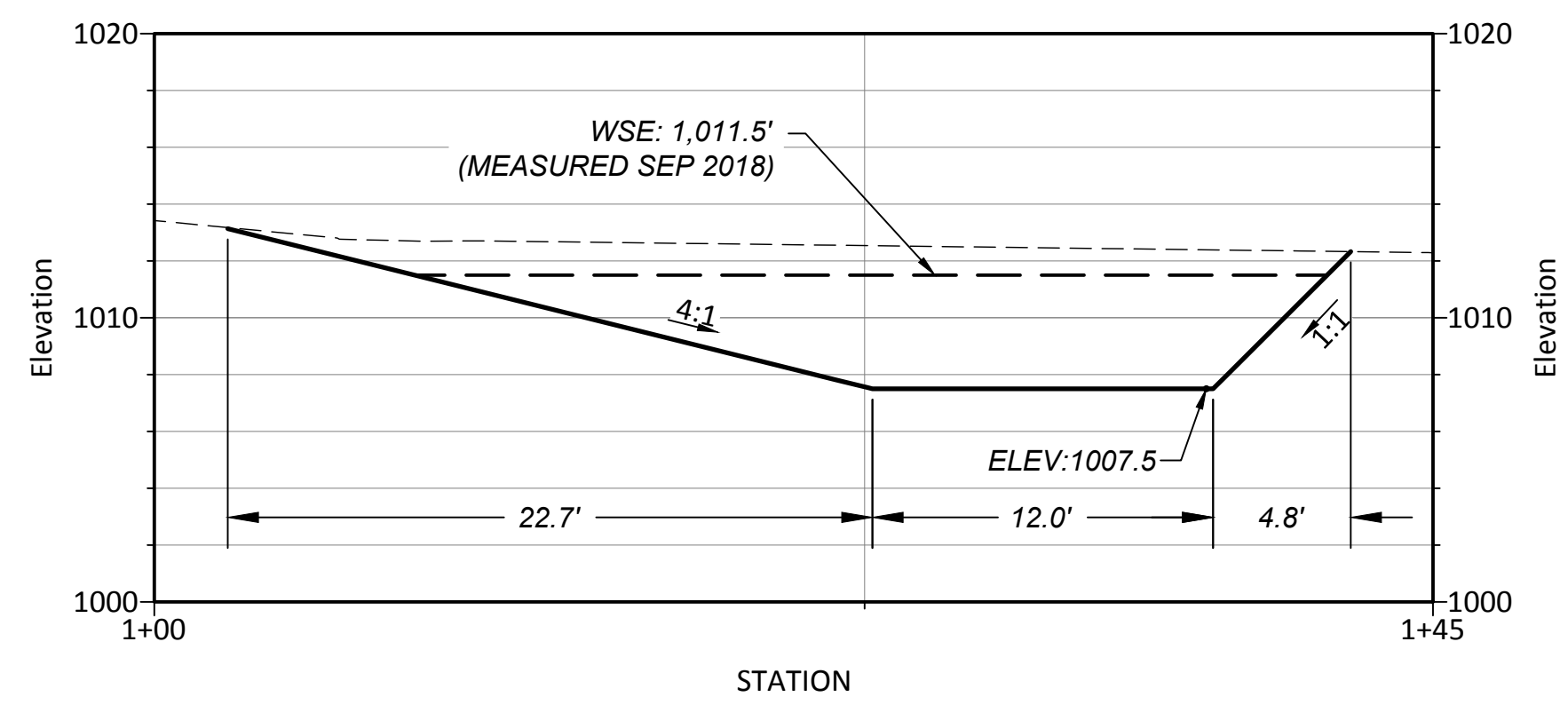
A UPPER SPRING TYPICAL SECTION
C6 SCALE: 1" = 6'



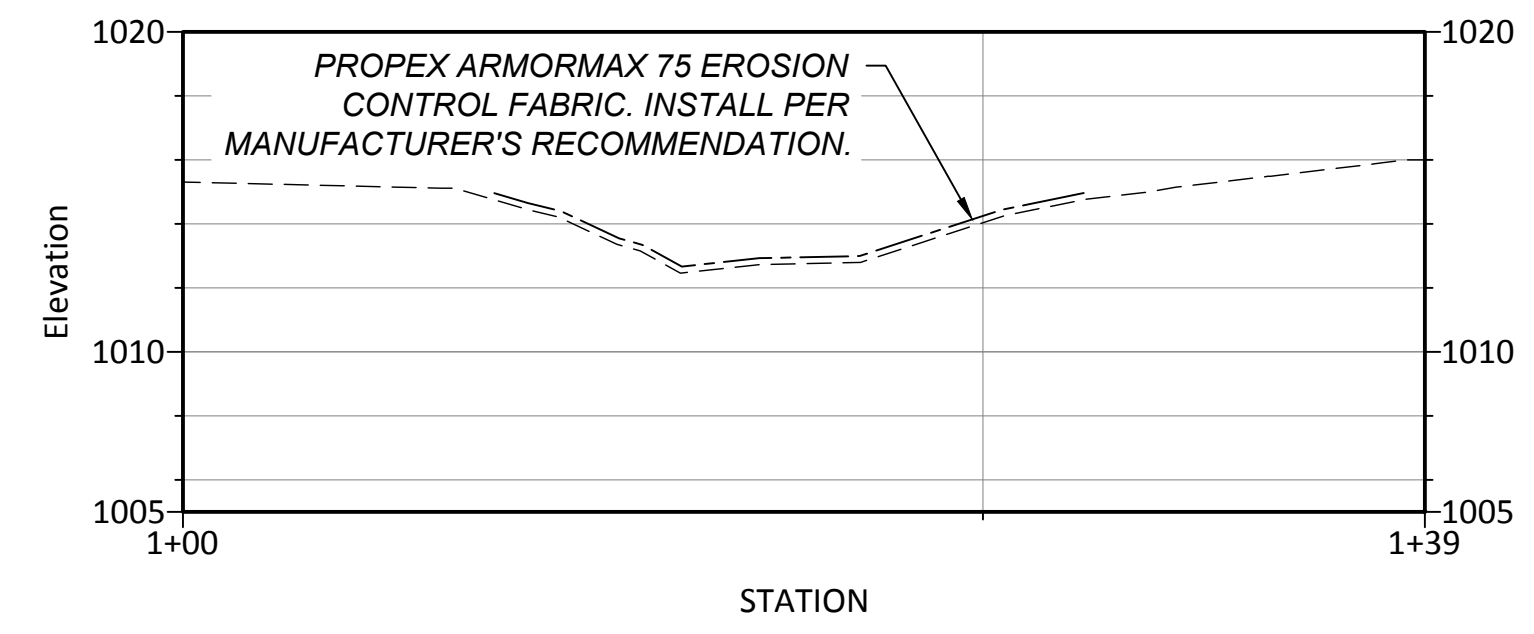
B UPPER SPRING TYPICAL SECTION
C6 SCALE: 1" = 6'



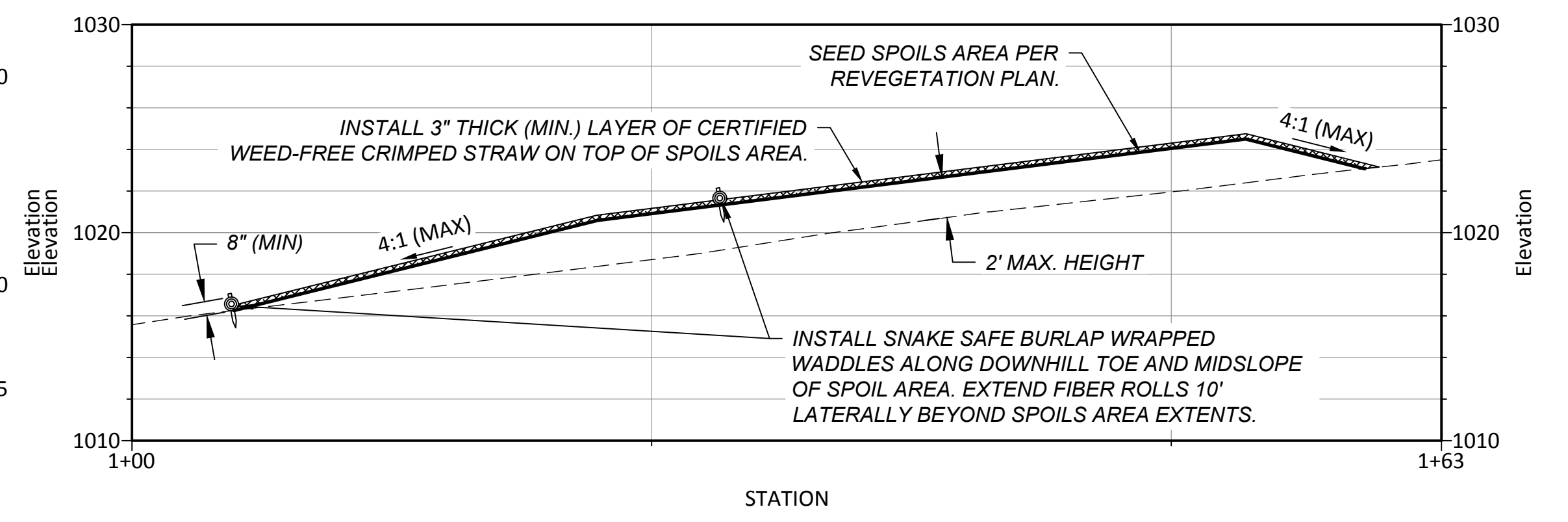
C KNUEDLER LAKE TYPICAL SECTION
C7 SCALE: 1" = 6'



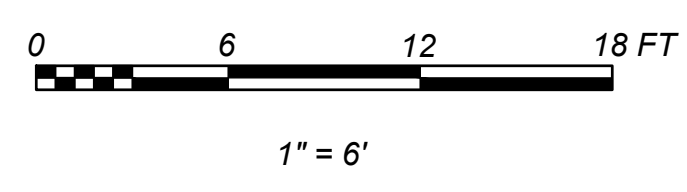
D KNUEDLER LAKE TYPICAL SECTION
C7 SCALE: 1" = 6'



E KNUEDLER LAKE OUTLET TYPICAL SECTION
C7 SCALE: 1" = 6'



F SPOILS AREA TYPICAL SECTION
C8, C9 SCALE: 1" = 6'



- SPOILS AREA NOTES:**
1. STRIP VEGETATION FROM SPOILS AREA PRIOR TO SPOILS PLACEMENT. SPREAD VEGETATION EVENLY ON TOP OF SPOILS PILE AFTER GRADING IS COMPLETE.
 2. PLACE SPOILS FILL IN LOOSE LIFTS NOT EXCEEDING 8 INCHES IN THICKNESS. COMPACT BY TRACKWALKING TO ALLOW ROOT PENETRATION.
 3. SEE SHEET C12 FOR EROSION CONTROL MATERIAL DETAILS.

USE OF DOCUMENTS
THIS DOCUMENT, INCLUDING
THIS INSTRUMENT
OF SERVICE FOR THIS
PROJECT AND SHALL NOT BE
USED FOR ANY OTHER
PROJECT WITHOUT THE
WRITTEN AUTHORIZATION
OF cbec, inc.

DESIGNED	DOCUMENT RELEASE
DRAWN	65% DRAFT
REVIEWED	REVISION NOTES
APPROVED	



PREPARED BY:
**MIDPENINSULA REGIONAL
OPEN SPACE DISTRICT**
330 DISTEL CIRCLE
LOS ALTOS, CA 94022-1404
(650) 691-1200



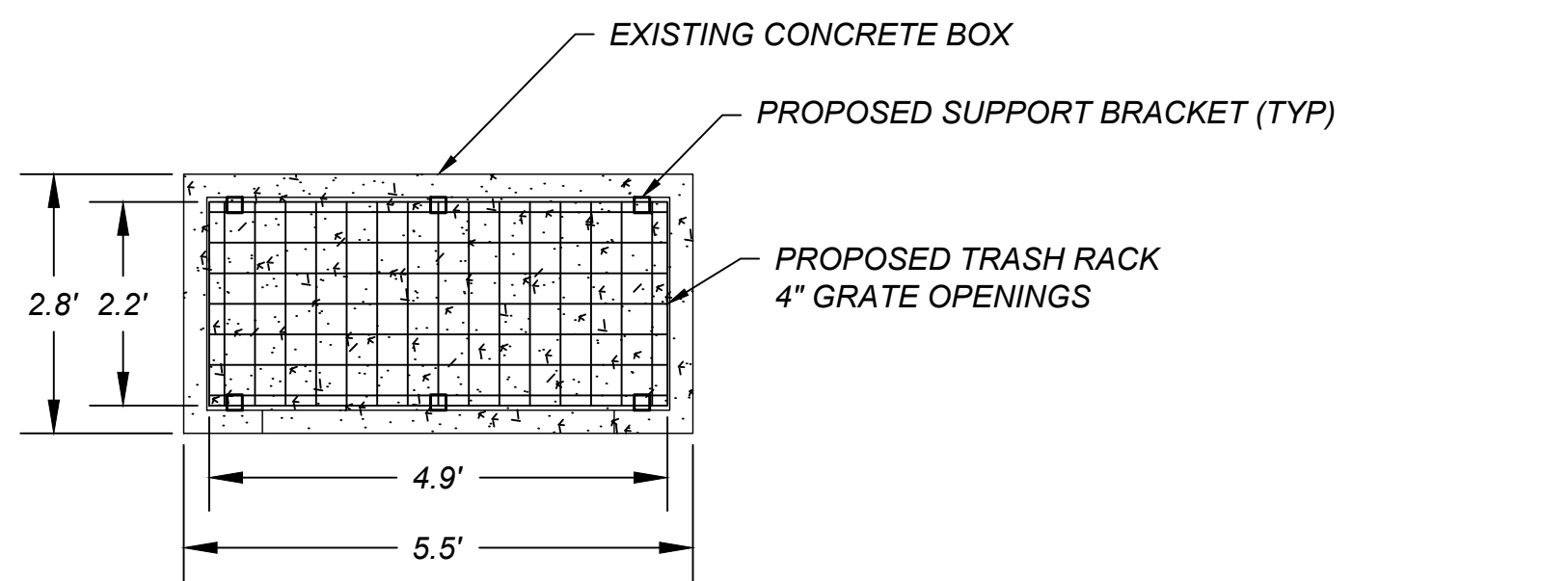
CLIENT:

CALIFORNIA
**MINDEGO RANCH
PONDS ENHANCEMENT PROJECT**
TYPICAL SECTIONS

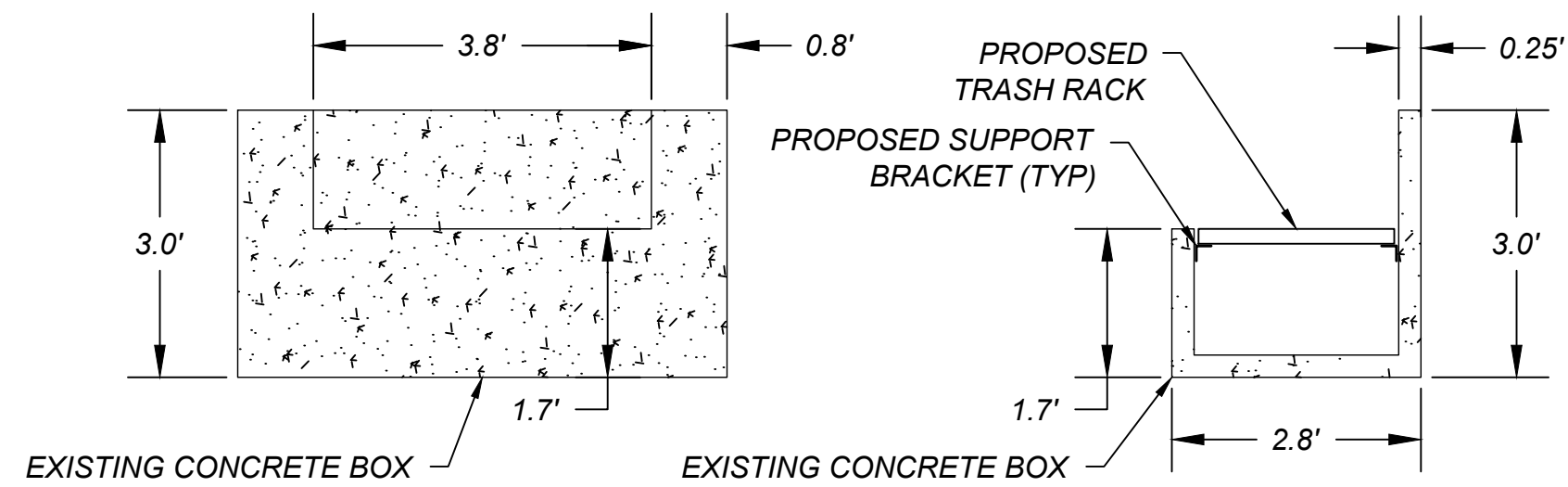
JOB NUMBER
18-1019

DATE
SEP 2019

SHEET
C10
10 OF 12



PLAN VIEW

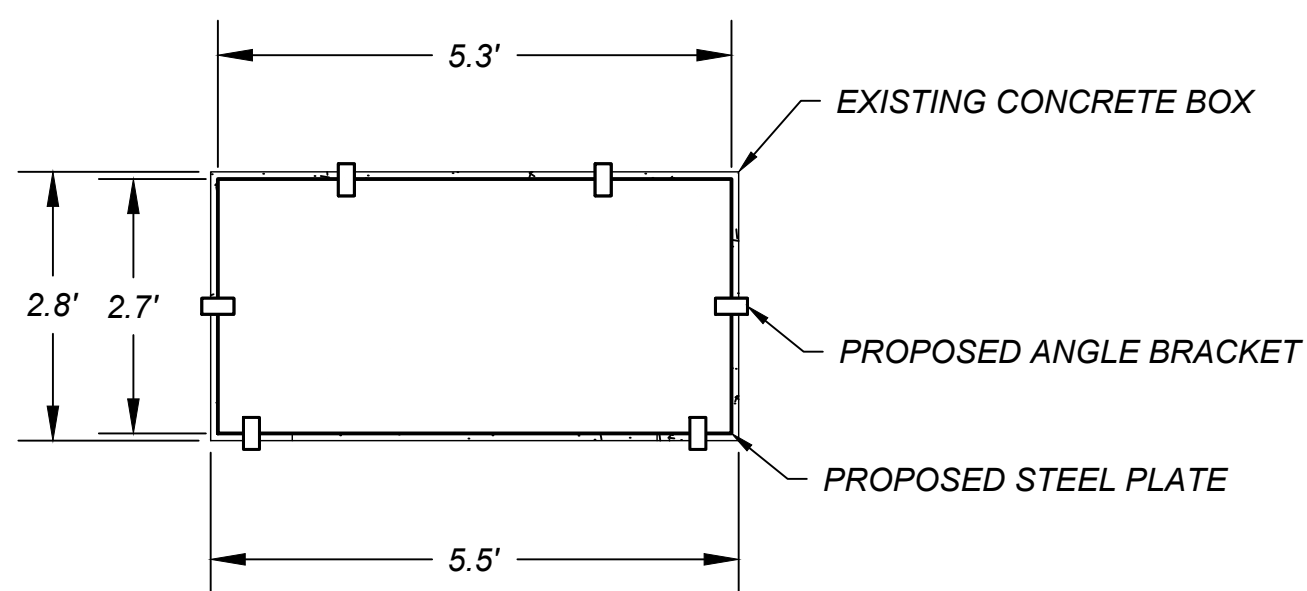


ELEVATION VIEW

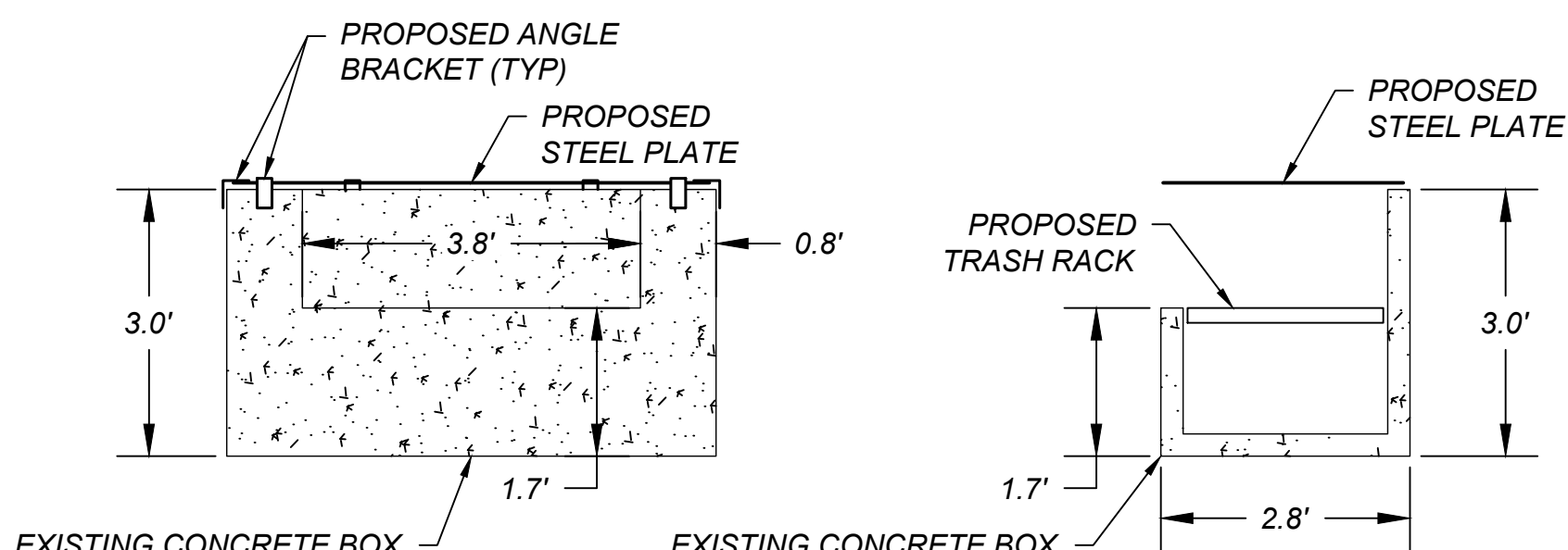
SECTION VIEW

1 CONCRETE BOX TRASH RACK DETAIL

C11 SCALE: 1" = 2'



PLAN VIEW



ELEVATION VIEW

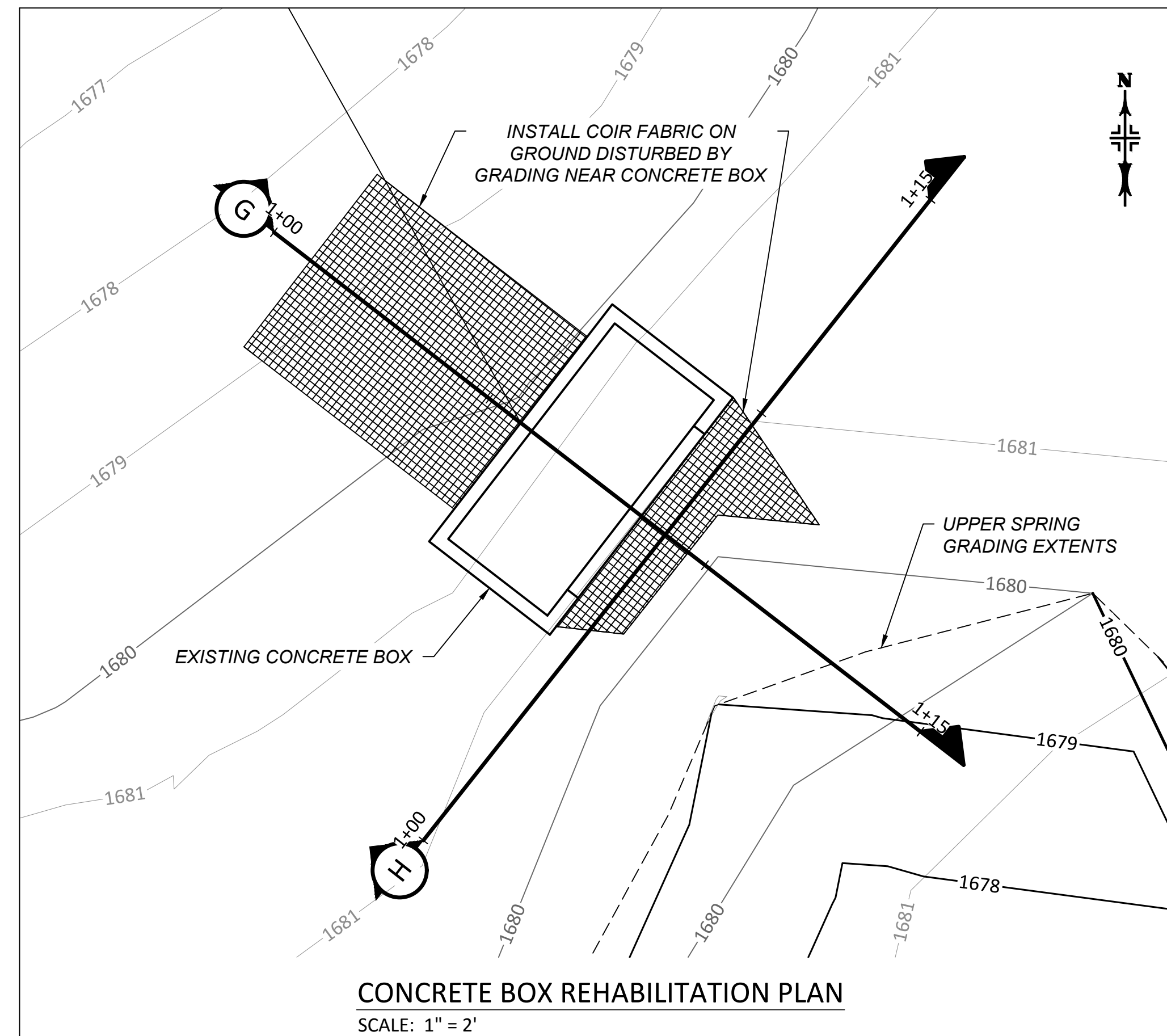
SECTION VIEW

2 CONCRETE BOX LID DETAIL

C11 SCALE: 1" = 2'

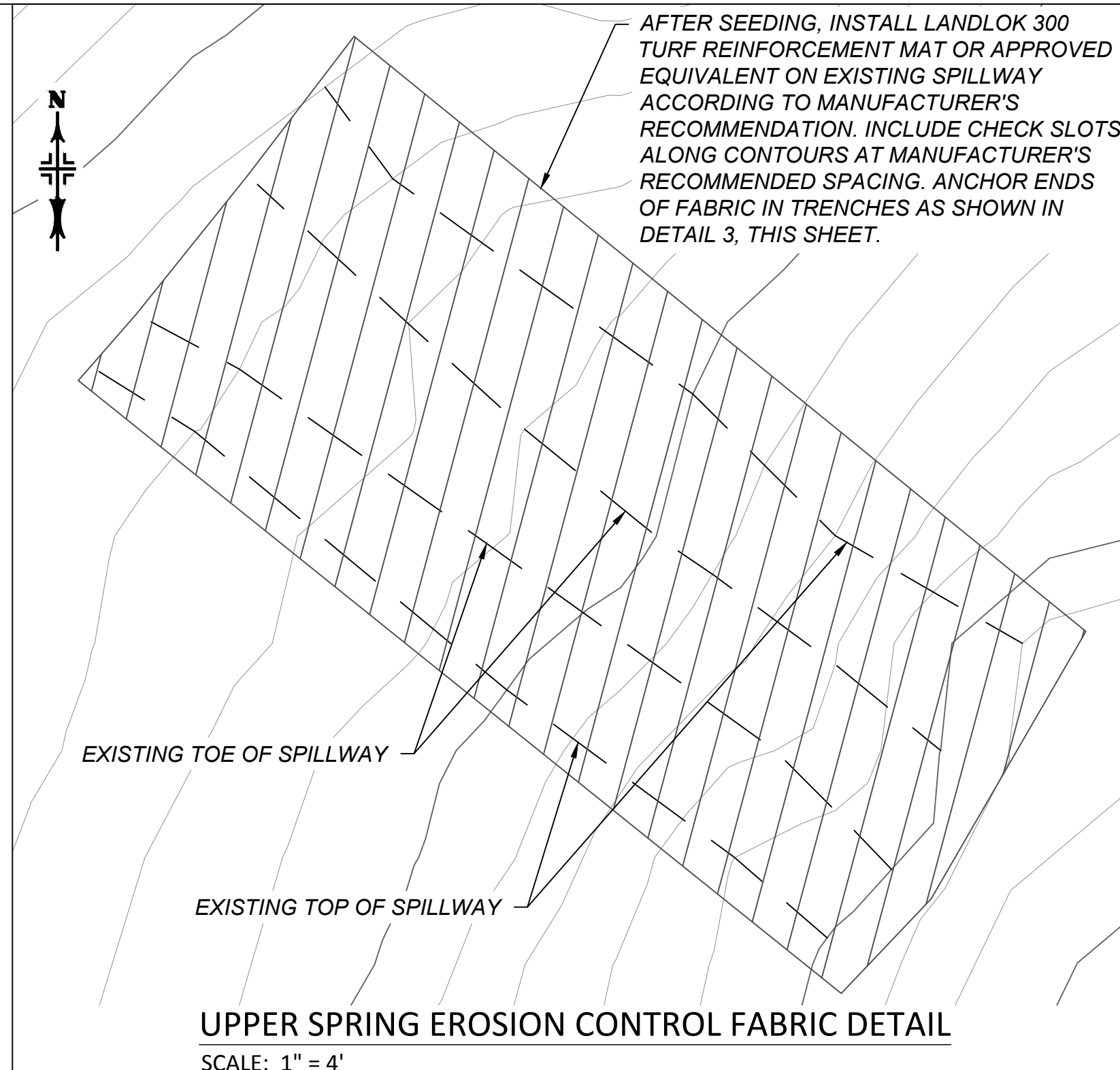


1" = 2'



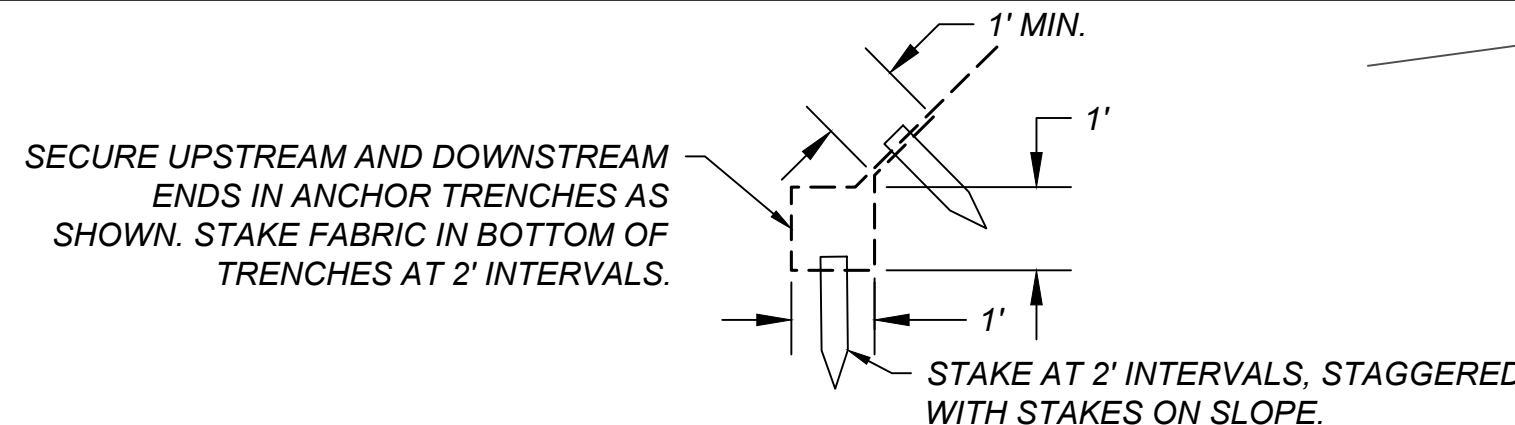
CONCRETE BOX REHABILITATION PLAN

SCALE: 1" = 2'



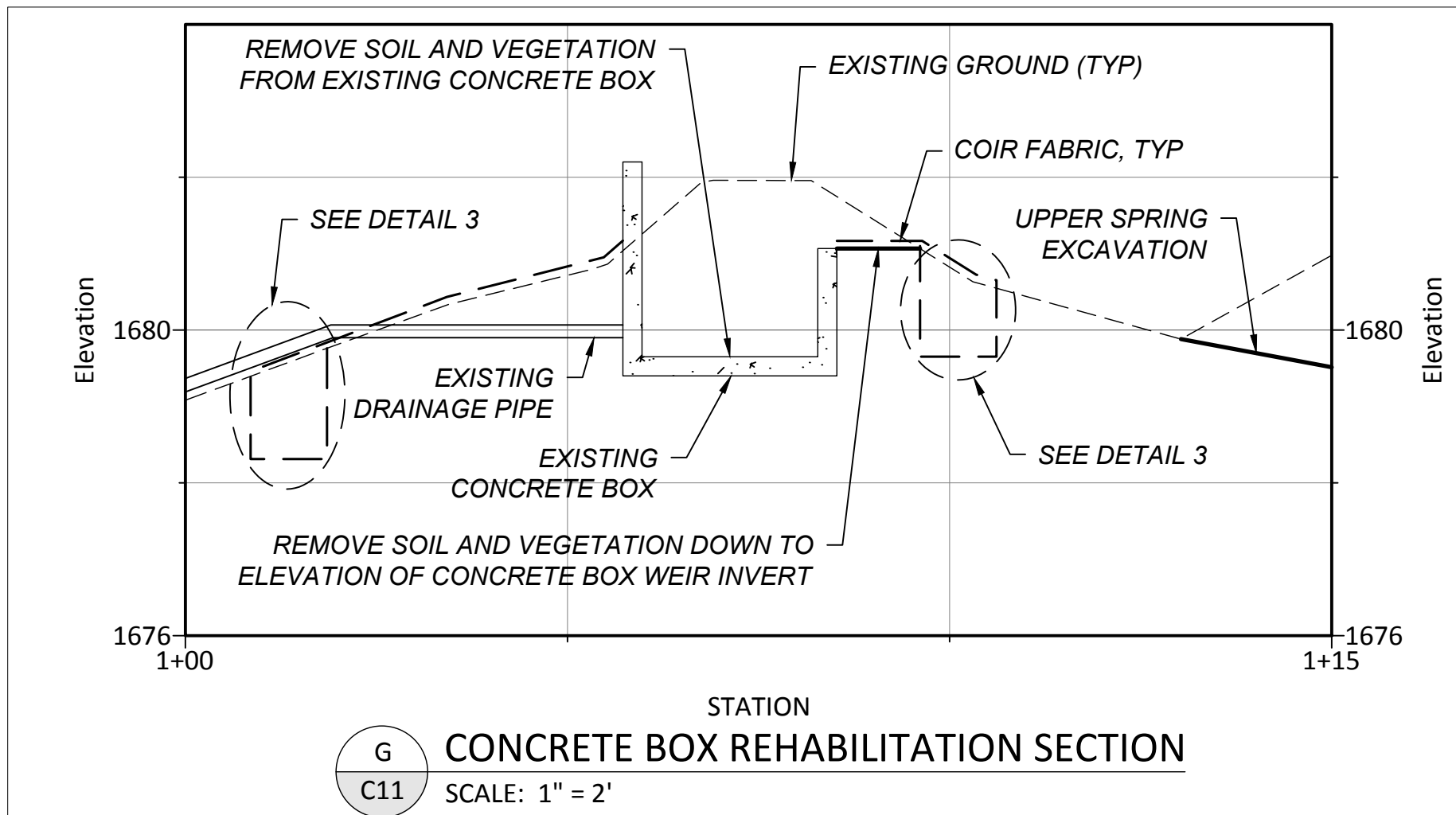
UPPER SPRING EROSION CONTROL FABRIC DETAIL

SCALE: 1" = 4'



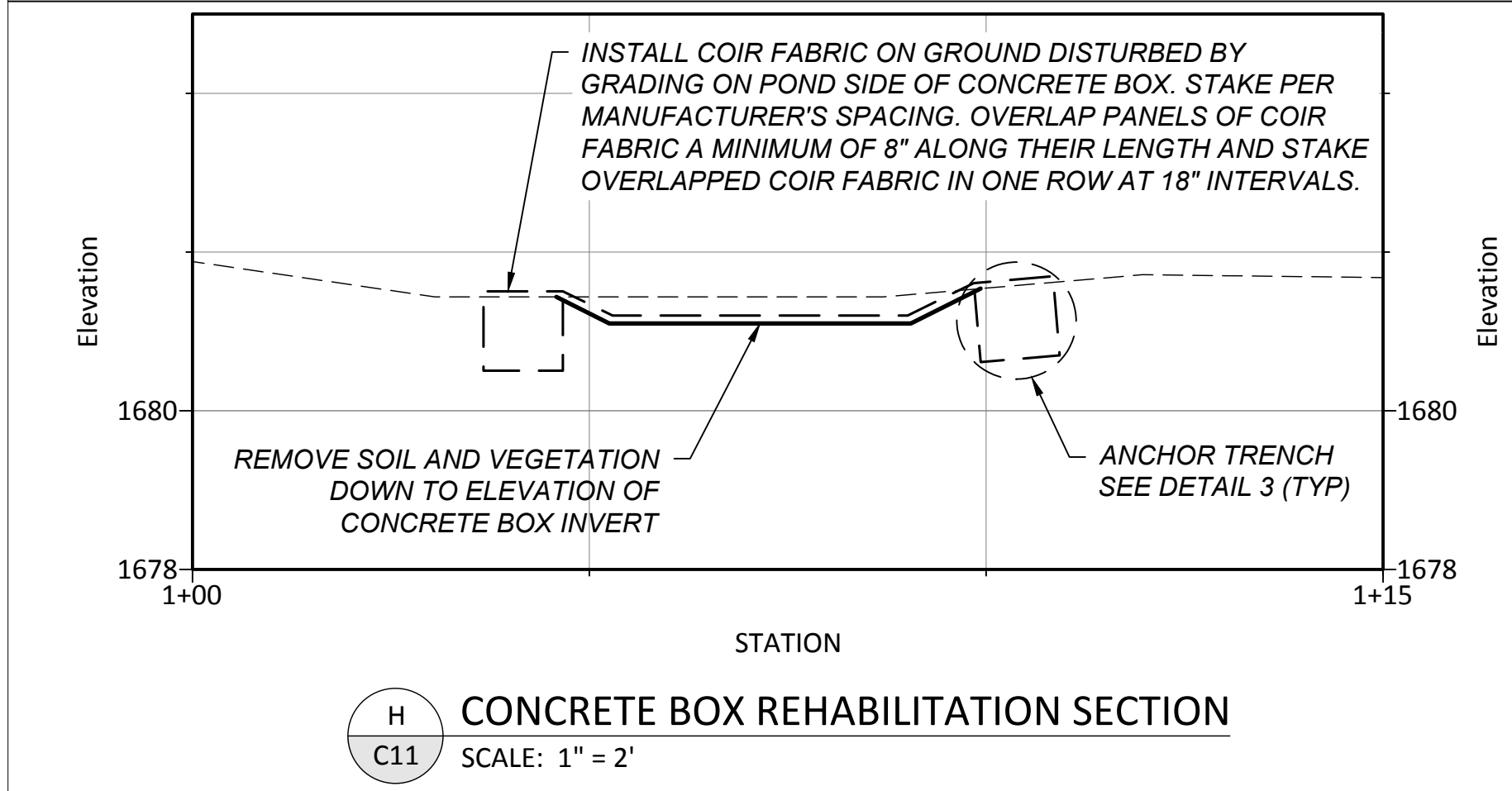
3 ANCHOR TRENCH DETAIL

C11 NOT TO SCALE



G CONCRETE BOX REHABILITATION SECTION

C11 SCALE: 1" = 2'

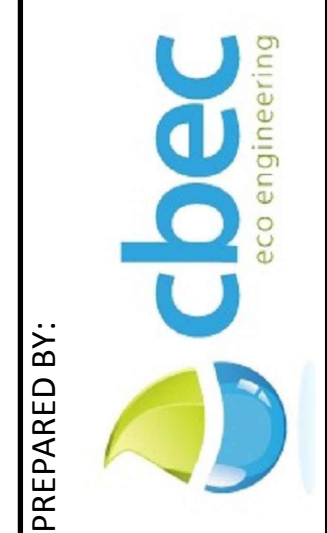


H CONCRETE BOX REHABILITATION SECTION

C11 SCALE: 1" = 2'

USE OF DOCUMENTS
THIS DOCUMENT, INCLUDING THIS INSTRUMENT OF SERVICE FOR THIS PROJECT AND SHALL NOT BE USED FOR ANY OTHER PROJECT WITHOUT THE WRITTEN AUTHORIZATION OF cbec, inc.

DESIGNED	AS	DOCUMENT RELEASE	65% DRAFT
DRAWN	JP	REVISION NOTES	
REVIEWED	SD		
APPROVED			



PREPARED BY:
MIDPENINSULA REGIONAL
OPEN SPACE DISTRICT
330 DISTEL CIRCLE
LOS ALTOS, CA 94022-1404
(650) 691-1200



CLIENT:

CALIFORNIA

SAN MATEO COUNTY
MINDEGO RANCH
PONDS ENHANCEMENT PROJECT
DETAILS

JOB NUMBER
18-1019

DATE
SEP 2019

SHEET
C11

11 OF 12

GENERAL

- ALL ACTIVITIES MUST CONFORM TO ALL PERMIT CONDITIONS.
- EROSION CONTROL POINT OF CONTACT: MARK CEDERBORG, (707) 975-3105.
- MIDPENINSULA REGIONAL OPEN SPACE DISTRICT (MROSD OR DISTRICT) POINT OF CONTACT: ZACH ALEXANDER, (650) 691-1200.
- BIOLOGICAL MONITOR: DAVE LAABS, (831) 662-3938.
- NO CONSTRUCTION SHALL OCCUR DURING A RED FLAG DAY OR WITHIN 24 HOURS OF A PREDICTED RED FLAG DAY.
- THE CONTRACTOR IS RESPONSIBLE AT ALL TIMES FOR PROTECTING THE WORK AREA, MATERIALS, AND EQUIPMENT ON THE JOB SITE UNTIL THE NOTICE OF COMPLETION HAS BEEN RECORDED.
- SITE ACCESS WITHIN THE PROPERTY MUST BE MAINTAINED AT ALL TIMES.
- CONSTRUCTION ACTIVITY SHALL CEASE AT THE DISCRETION OF THE BIOLOGICAL MONITOR ON SITE.
- PROJECT IS PLANNED TO BE COMPLETED PRIOR TO SUBSTANTIAL PRECIPITATION EVENTS. ADDITIONAL EROSION AND SEDIMENT CONTROL MEASURES MAY BE REQUIRED IF CONSTRUCTION SCHEDULE IS EXTENDED OR IF UNFORESEEN PRECIPITATION EVENTS OCCUR.
- TYPICAL EROSION CONTROL SEQUENCING WILL BE AS FOLLOWS:
 - STEAM CLEAN ALL EQUIPMENT BEFORE ENTERING THE SITE. USE LATE MODEL EQUIPMENT TO AVOID FLUID LEAKS.
 - THE CONTRACTOR SHALL SUBMIT A DEWATERING PLAN TO MROSD AT LEAST 30 BUSINESS DAYS BEFORE CONSTRUCTION MOBILIZATION.
 - INSTALL DEWATERING DEVICES TO DEWATER WORK AREAS AS APPLICABLE PRIOR TO BEGINNING CONSTRUCTION. INSTALLATION OF NEW, TEMPORARY EARTH FILL DAMS WILL NOT BE ALLOWED.
 - DEWATER WORK AREA TO THE EXTENT PRACTICABLE. DISCHARGE ONTO LOW-GRADIENT, VEGETATED, ADJACENT FIELD. DISCHARGE FROM DEWATERING SHALL BE APPLIED SUCH THAT THE RISK OF EROSION IS MINIMIZED. INSTALL BMPS PRIOR TO CONSTRUCTION FOR AREAS THAT WILL BE EXCAVATED IN THE WET.
 - PERFORM EARTHWORK.
 - INSTALL TEMPORARY AND PERMANENT EROSION AND SEDIMENT CONTROL BMPS.
 - VACATE COMPLETED WORK AREAS TO MINIMIZE TRAFFIC IN EXCAVATION AREAS.
- CEASE CONSTRUCTION DURING 50% CHANCE PRECIPITATION EVENT.
- MINIMIZE ENVIRONMENTAL IMPACTS BY USING IDENTIFIED ACCESS ROADS AND OFF-HIGHWAY VEHICLE TRAILS FOR VEHICLE TRAVEL WHERE POSSIBLE.
- ALL VEHICLES MUST BE PROCEEDED BY A BIOLOGICAL MONITOR IN DESIGNATED AREAS.
- STABILIZE DISTURBED SOIL WITH CRIMPED STRAW OR FIBER ROLLS ACCORDING TO CALTRANS GUIDELINES. TRACK OVER ALL ACCESS AND STAGING AREAS. IF SOIL DISTURBANCE OCCURS, TAKE APPROPRIATE MEASURES TO STABILIZE SOIL.
- INSPECT AND MAINTAIN ALL EQUIPMENT TO AVOID FLUID LEAKS.
- UNAUTHORIZED NON-STORMWATER DISCHARGES WHICH MAY BE APPLICABLE TO THE SITE INCLUDE:
 - VEHICLE AND EQUIPMENT CLEANING, FUELING, AND MAINTENANCE OPERATIONS
 - VEHICLE AND EQUIPMENT WASH WATER
 - SANITARY AND SEPTIC WASTES
- ENSURE THAT UNAUTHORIZED NON-STORMWATER DISCHARGES ARE ELIMINATED, CONTROLLED, DISPOSED, OR TREATED ON-SITE. DISCHARGES OF CONSTRUCTION MATERIALS AND WASTES, SUCH AS FUEL OR PAINT, RESULTING FROM DUMPING, SPILLS, OR DIRECT CONTACT WITH RAINWATER OR STORMWATER RUNOFF ARE PROHIBITED.
- PRESERVE EXISTING VEGETATION NOT IDENTIFIED FOR CLEARING TO THE EXTENT PRACTICABLE, AND AS DIRECTED BY THE OWNER'S REPRESENTATIVE.
- CONTROL THE AREA OF SOIL DISTURBING OPERATIONS SO THAT EROSION CONTROL BMPS CAN BE IMPLEMENTED QUICKLY AND EASILY.
- STABILIZE NON-ACTIVE AREAS WITHIN 14 DAYS OF CESSATION OF CONSTRUCTION ACTIVITIES OR SOONER IF STIPULATED BY LOCAL REQUIREMENTS.
- MAINTAIN SUFFICIENT EROSION CONTROL MATERIALS ON-SITE TO ALLOW IMPLEMENTATION OF EROSION CONTROL MEASURES.

DISTRICT NOTIFICATION

- THE CONTRACTOR MUST NOTIFY MROSD IF ANY OF THE CIRCUMSTANCES BELOW ARE ENCOUNTERED:
- IF SUBSTANTIAL PROBLEMS ARE ENCOUNTERED DURING CONSTRUCTION WHICH RESULT IN SIGNIFICANT CHANGES TO THE DESIGN OR THE PROJECT SCOPE AND SCHEDULE, THE CONTRACTOR SHALL NOTIFY THE DISTRICT BEFORE PROCEEDING WITH CONSTRUCTION.
 - IF THE CONTRACTOR ENCOUNTERS FACILITIES, UTILITIES, OR OTHER UNKNOWN CONDITIONS NOT SHOWN ON OR REASONABLY INFERABLE FROM INFORMATION MADE AVAILABLE TO THE CONTRACTOR, OR WHICH ARE NOT APPARENT FROM INSPECTION OF THE PROJECT SITE, THE CONTRACTOR MUST PROMPTLY NOTIFY THE DISTRICT, AND MUST AVOID TAKING ANY ACTION WHICH COULD CAUSE DAMAGE TO THE FACILITIES OR UTILITIES PENDING FURTHER DIRECTION FROM THE DISTRICT.
 - THE CONTRACTOR MUST NOTIFY THE DISTRICT OF ANY DEFECTS DISCOVERED IN DISTRICT-PROVIDED MATERIALS OR EQUIPMENT.
 - THE CONTRACTOR MUST PROMPTLY, AND BEFORE THE FOLLOWING CONDITIONS ARE DISTURBED, PROVIDE WRITTEN NOTICE TO THE DISTRICT IF THE CONTRACTOR FINDS ANY OF THE FOLLOWING CONDITIONS:
 - MATERIAL THAT THE CONTRACTOR BELIEVES MAY BE A HAZARDOUS WASTE, AS DEFINED IN SECTION 25117 OF THE HEALTH AND SAFETY CODE, THAT IS REQUIRED TO BE REMOVED TO A CLASS I, CLASS II, OR CLASS III DISPOSAL SITE IN ACCORDANCE WITH THE PROVISIONS OF EXISTING LAW;
 - SUBSURFACE OR LATENT PHYSICAL CONDITIONS AT THE WORKSITE DIFFERING FROM THOSE INDICATED BY INFORMATION ABOUT THE WORKSITE MADE AVAILABLE TO THE CONTRACTOR PRIOR TO THE DEADLINE FOR SUBMITTING PROPOSALS; OR
 - UNKNOWN PHYSICAL CONDITIONS AT THE WORKSITE OF ANY UNUSUAL NATURE, MATERIALLY DIFFERENT FROM THOSE ORDINARILY ENCOUNTERED AND GENERALLY RECOGNIZED AS INHERENT IN WORK OF THE CHARACTER REQUIRED BY THE CONTRACT DOCUMENTS.
 - THE CONTRACTOR MUST NOTIFY THE DISTRICT SUFFICIENTLY IN ADVANCE OF THE TIME NEEDED TO REQUEST SERVICE FROM EACH UTILITY PROVIDER SO THAT CONNECTIONS AND SERVICES ARE INITIATED IN ACCORDANCE WITH THE PROJECT SCHEDULE.
 - THE CONTRACTOR MUST ENSURE THAT ALL PERSONS PERFORMING WORK AT THE PROJECT SITE ARE REQUIRED TO IMMEDIATELY NOTIFY THE DISTRICT UPON DISCOVERY OF ANY POTENTIAL HISTORIC OR ARCHEOLOGICAL ITEMS, INCLUDING HISTORIC OR PREHISTORIC RUINS, BURIAL GROUNDS, ARCHEOLOGICAL OR VERTEBRATE PALEONTOLOGICAL SITE, INCLUDING FOSSILIZED FOOTPRINTS OR OTHER ARCHEOLOGICAL, PALEONTOLOGICAL OR HISTORICAL FEATURE ON THE PROJECT SITE.
 - IN THE EVENT OF A FIRE, THE CONTRACTOR MUST IMMEDIATELY CONTACT MOUNTAIN VIEW DISPATCH AT (650) 968-4411 AND THE CALIFORNIA DEPARTMENT OF FORESTRY AT (831) 335-9113 AND MUST NOTIFY THE DISTRICT.
 - THE CONTRACTOR SHALL NOTIFY THE DISTRICT IF ANY INJURY OR MORTALITY TO A SPECIAL STATUS SPECIES IS OBSERVED.

SCHEDULING

- CONSTRUCTION ACTIVITIES SHALL BE COMPLETED IN THE 3-MONTH WINDOW OF AUGUST THROUGH OCTOBER TO MINIMIZE THE LIKELIHOOD OF PRECIPITATION DURING CONSTRUCTION. IF GRADING IS TO BE COMPLETED AFTER OCTOBER 15, THE CONTRACTOR SHALL REQUEST PERMISSION FROM MSORD TO PERFORM THE WORK.
- MONITOR THE WEATHER FORECAST FOR PRECIPITATION, AND ADJUST THE CONSTRUCTION SCHEDULE ACCORDINGLY TO ALLOW FOR SOIL STABILIZATION AND SEDIMENT TREATMENT CONTROLS ON DISTURBED AREAS PRIOR TO THE ONSET OF PRECIPITATION.
- SCHEDULE EARTHWORK TO OCCUR DURING DRIER PERIODS, BUT ALSO TO AVOID IMPACTS TO SENSITIVE TERRESTRIAL SPECIES.

PRESERVATION OF EXISTING VEGETATION

- CONSULT WITH THE DISTRICT REPRESENTATIVE BEFORE ANY UNPLANNED VEGETATION REMOVAL OR OFF-ROAD ACCESS IS MADE WITHIN THE PROJECT AREA.
- THE BIOLOGICAL MONITOR WILL EDUCATE ALL FIELD PERSONNEL ON BEST MANAGEMENT PRACTICES FOR AVOIDING IMPACTS TO SENSITIVE NATURAL RESOURCES. ALL FIELD PERSONNEL WILL SIGN A WRITTEN RECORD SIGNIFYING THAT THEY HAVE RECEIVED AND UNDERSTAND THE TRAINING BEFORE WORKING ON SITE.

SITE REVEGETATION

- REVEGETATE PROJECT SITES ACCORDING TO KNUEDLER LAKE REVEGETATION PLAN AND UPPER SPRING REVEGETATION PLAN PREPARED BY KITTLESON ENVIRONMENTAL CONSULTING.
- HAND BROADCAST SEED MIX AFTER SPOILS GRADING IS COMPLETE. REFER TO THE APPROPRIATE REVEGETATION PLAN FOR SPECIFIED SEED MIX AT EACH SITE.
- AFTER SEEDING, RAKE SEEDS INTO SPOILS PILE AND IMMEDIATELY COVER WITH CERTIFIED WEED-FREE CRIMPED STRAW.

FIBER ROLLS

- PLACE BURLAP-WRAPPED WATTLE FIBER ROLLS AT THE AREAS IDENTIFIED ON SHEETS C8 AND C9.

CRIMPED STRAW

- PLACE CRIMPED, CERTIFIED WEED-FREE STRAW AT A THICKNESS OF 3" ON TOP OF SPOIL AREAS IDENTIFIED ON SHEETS C8 AND C9.

CONSTRUCTION MATERIAL AND EQUIPMENT

- SECURE ALL MATERIAL AND EQUIPMENT AT THE END OF EACH WORK DAY.

VEHICLE EQUIPMENT AND CLEANING

- ANYTHING WITH WHEELS, INCLUDING WHEELBARROWS, ATVS, OR MOTORIZED CARTS THAT WILL BE USED AT THE FIELD SITE NEEDS TO BE CLEANED AND THIS IS BEST DONE AT THE FIELD OFFICE BEFORE THE PROJECT. VEHICLES THAT STAY AT THE STAGING AREA DO NOT HAVE TO BE CLEANED AND SANITIZED. HOWEVER, IT IS GOOD PHYTOSANITARY PRACTICE TO REMOVE SOIL FROM WHEELS EVERY TIME YOU LEAVE A SITE.
 - SCRUB DOWN TIRES EITHER BY HAND SCRUBBING OR USING A PRESSURE SPRAY WASH.
 - SANITIZE USING DISINFECTING SPRAY SUCH AS BLEACH (MUST BE MADE WEEKLY) OR RUBBING ALCOHOL.
- DO NOT WASH ANY VEHICLES OR EQUIPMENT AT THE PROJECT SITE.
- CLEAN/WASH VEHICLES AND EQUIPMENT ONLY AT APPROVED OFF-SITE AREAS.
- CLEAN ALL EQUIPMENT WORKING WITHIN THE POND WITH 70% ISOPROPYL ALCOHOL PRIOR TO PROJECT IMPLEMENTATION AND RE-ENTRY TO PROJECT SITE TO REMOVE CONTAMINANTS THAT MAY ENTER THE POND AND ADJACENT LANDS. CONTAMINANTS INCLUDE INVASIVE SPECIES.
- CLEAN ALL EQUIPMENT WITH 70% ISOPROPYL ALCOHOL AFTER WORK HAS BEEN COMPLETED AND BEFORE THE EQUIPMENT LEAVES THE SITE.
- ENSURE THAT ALL EQUIPMENT WORKING WITHIN OR WITHOUT THE POND IS FREE OF FUEL, LUBRICATION, AND COOLANT LEAKS DURING PROJECT IMPLEMENTATION.
- INSPECT EQUIPMENT WORKING WITHIN THE POND FOR LEAK POTENTIALS (I.E. CRACKED HOSES, LOOSE FILLING CAPS, STRIPPED DRAIN PLUGS, ETC.) PRIOR TO PROJECT IMPLEMENTATION AND AT THE END OF EACH WORK SHIFT.
- ADHERE TO "GUIDELINES FOR MINIMIZING PHYTOPHTORA CONTAMINATION AT MIDPENINSULA REGIONAL OPEN SPACE DISTRICT PRESERVES" DURING ALL CONSTRUCTION ACTIVITIES.

VEHICLE EQUIPMENT FUELING

- VEHICLE REFUELING MUST ADHERE TO THE TERMS OF THE PERMIT.
- REFUEL EQUIPMENT WITHIN THE STAGING AREAS ONLY.
- MAINTAIN SPILL KITS IN CLOSE PROXIMITY (E.G. CREW TRUCKS AND OTHER LOGICAL LOCATIONS) WHEN USING HAZARDOUS MATERIALS.
- PRIOR TO ENTERING THE WORK SITE, INFORM ALL FIELD PERSONNEL OF THE LOCATION OF SPILL KITS ON CREW TRUCKS AND AT OTHER LOCATIONS AT THE PROJECT SITE, AS WELL AS PROPER FUELING AND CLEANUP PROCEDURES.

VEHICLE EQUIPMENT MAINTENANCE

- MAINTAIN SPILL KITS IN CLOSE PROXIMITY (E.G. CREW TRUCKS AND OTHER LOGICAL LOCATIONS) WHEN USING HAZARDOUS MATERIALS.
- PRIOR TO ENTERING THE WORK SITE, INFORM ALL FIELD PERSONNEL OF THE LOCATION OF SPILL KITS ON CREW TRUCKS AND AT OTHER LOCATIONS AT THE PROJECT SITE, AS WELL AS PROPER FUELING AND CLEANUP PROCEDURES. THE PROJECT LEAD SHALL DOCUMENT THIS TRAINING.

MATERIAL DELIVERY AND STORAGE

- STORE ANY ONSITE CHEMICALS IN WATERTIGHT CONTAINERS WITH SECONDARY CONTAINMENT OR IN A STORAGE SHED.
- COVER ERODIBLE LANDSCAPE MATERIAL WHEN NOT IN USE.
- DESIGNATE SPECIFIC AREAS FOR MATERIAL DELIVERY AND STORAGE.

SPILL PREVENTION AND CONTROL

- APPROPRIATELY TRAIN FIELD PERSONNEL IN SPILL PREVENTION, HAZARDOUS MATERIAL CONTROL, AND CLEAN-UP OF ACCIDENTAL SPILLS.
- MAINTAIN SPILL KITS IN CLOSE PROXIMITY (E.G. CREW TRUCKS AND OTHER LOGICAL LOCATIONS) WHEN USING HAZARDOUS MATERIALS.
- PRIOR TO ENTERING THE WORK SITE, INFORM ALL FIELD PERSONNEL OF THE LOCATION OF SPILL KITS ON CREW TRUCKS AND AT OTHER LOCATIONS AT THE PROJECT SITE, AS WELL AS PROPER FUELING AND CLEANUP PROCEDURES. THE PROJECT QSD/QSP WILL DOCUMENT THIS TRAINING.

SOLID WASTE MANAGEMENT

- DO NOT HAUL SOLID WASTE OFF-SITE.
- SET ASIDE WOODY DEBRIS AND DISTRIBUTE ON-SITE.
- SPREAD SOIL IN SPOILS AREAS WITH ROOTS TRACKED IN. PLACE CLEAN SOIL FIRST, THEN DISTRIBUTE GREEN, NON-WOODY VEGETATION AS MULCH ON TOP OF SPOILS AREAS.
- UNLESS OTHERWISE SPECIFIED ON THE PLANS, PLACE SOLID WASTE GENERATED FROM POND EXCAVATIONS AND WOODY VEGETATION DURING LAND CLEARING IN SELECT DESIGNATED WASTE COLLECTION AREAS ONSITE.
- ARRANGE REGULAR WASTE COLLECTION AND DISPOSAL AT AUTHORIZED DISPOSAL AREAS.
- EDUCATE FIELD PERSONNEL ON SOLID WASTE STORAGE AND DISPOSAL PROCEDURES.

BMP INSPECTION AND MAINTENANCE

- INSPECT ALL EROSION AND SEDIMENT CONTROL MEASURES ON A REGULAR BASIS. REPAIR OR REPLACE AS NEEDED.

USE OF DOCUMENTS
THIS DOCUMENT, INCLUDING THIS CONTRACT INSTRUMENT, IS THE SOLE INSTRUMENT OF SERVICE FOR THIS PROJECT AND SHALL NOT BE USED FOR ANY OTHER PROJECT WITHOUT THE WRITTEN AUTHORIZATION OF cbec, inc.

DESIGNED AS	DOCUMENT RELEASE
DRAWN	65% DRAFT
REVIEWED	REVISION NOTES
APPROVED	

PREPARED BY:



cbec
eco engineering

MIDPENINSULA REGIONAL
OPEN SPACE DISTRICT
330 DISTEL CIRCLE
LOS ALTOS, CA 94022-1404
(650) 691-1200



CLIENT:

CALIFORNIA

SAN MATEO COUNTY

MINDEGO RANCH
PONDS ENHANCEMENT PROJECT

NOTES

JOB NUMBER
18-1019

DATE
SEP 2019

SHEET
C12
12 OF 12

PRELIMINARY DESIGN
NOT FOR CONSTRUCTION