

**Minutes of the Regular Meeting of the Board of Directors**  
**February 16, 2012**  
**Location: RCD Office**

Directors present: Rich Allen, Neal Kramer, Jim Reynolds

Staff present: RCD – Kellyx Nelson, Karissa Anderson, Chelsea Moller  
NRCS – Jim Howard

Guests: Neil Curry, Steve Simms, Dante Silvestri, Victor Rabinovich, Greg Bonaparte,  
Catherine Peery, Tim Frahm, Ron Sturgeon, BJ Burns, Lorena Burns, Paul Poletti

**1 Call to Order**

- Allen called the meeting to order at 6:32 pm.

**2 Introduction of Guests and Staff**

**3 Public Comment**

- There was no public comment.

**4 Approval of Agenda**

- Reynolds motioned to approve the agenda, Kramer seconded, agenda passed unanimously.

**5 Consent Agenda**

- Reynolds motioned to approve the consent agenda, Kramer seconded, consent agenda passed unanimously.

**6 Discussion Items**

**6.1 Update on Livestock & Land (L&L) Workshops – Karissa Anderson**

- Anderson distributed the attached workshop evaluation summary (Attachment A). Feedback from the evaluation surveys was very positive, with 97% of respondents indicating that the workshops met their needs.
- Anderson presented the attached presentation on the purpose and accomplishments of the L&L Program (Attachment B). This year the L&L Program provided technical assistance through workshops, site visits, and site specific recommendation reports to landowners representing over 1200 acres of land. Some participants of the program have already completed independent implementation projects.

**6.2 2011 First Flush Results – Karissa Anderson**

- Anderson described First Flush, a partnership with the water quality program of the Monterey Bay National Marine Sanctuary in which teams of volunteers monitor the quality of water coming out of storm drains during the first significant rain event of the year. The RCD provides local coordination.

- Volunteers were deployed on October 5, 2011 at 1:00 a.m. in harsh weather conditions to monitor 9 sites from Montara to Surfers' Beach. Results show random inconsistent above-threshold levels of nutrients (nitrate, orthophosphate) and metals (nickel, lead, zinc). Concentrations were generally lower than pollutant concentrations in the counties of Santa Cruz and Monterey. We have found very high concentrations of fecal indicator bacteria for every single site for multiple years.
- This year, we would like to expand north to Pacifica and south to Half Moon Bay and San Gregorio. This will require more volunteers and more funding. In the past the San Gregorio Environmental Resource Center has done some first flush sampling, so we hope to coordinate with them for next year.

### 6.3 Executive Director Report – Kellyx Nelson

- Challenges with State contracting
  - We are very dependent on bond funds, and there are more and more challenges for us that create disincentives for voluntary partnership and conservation. Some of the new labor compliance requirements (including Labor Compliance Programs, or LCPs) put us in the position to enforce prevailing wage requirements on public works construction projects. It would require RCDs to be enforcement agencies, and require us to enforce labor law which is not our expertise.
  - RCD staff has been participating in meetings and conference calls regarding this to find a solution and has been playing a statewide coordinating role on the issue. State staff from the Department of Industrial Relations has said that these were intended for larger projects, and RCDs fell through the cracks.
  - California created a Compliance Monitoring Unit (CMU), under which projects are exempt from needing an LCP if they are \$24,000 or less, but Prop 84 is written such that it does not fall under the CMU. Nelson asked Assemblymember Hill to look into sponsoring legislation so that we Prop 84 would be included in the CMU.
- Late State payments and losing invoices
  - The State Water Resources Control Board has lost a progress report and invoice that we sent last November which has created a significant cash flow problem for us. They will not process our next invoice until they process the first one, which they say will take another 4-6 weeks from today. This invoice was for work we completed last September.
- New hire
  - We have completed our search for a Conservation Project Coordinator for the Fitzgerald Pollution Reduction Program, the Rural Roads Program, and some other projects. We received 93 applications for the part-time, temporary, grant-funded position, conducted 6 interviews, and are making offers to two people.
- Nelson will be on vacation from February 23 – March 1. Renee Moldovan will be Acting Executive Director in her absence.
- Nelson invited the Directors to the CARCD annual conference in November in southern California. It is always the week before Thanksgiving. She recommended they get the event on their calendars now in case they might be able to come.

- The contract for the Integrated Regional Watershed Management Plan (IRWMP) grant for work on Pescadero flooding and habitat has been delayed until May 2012, which may be a good thing to give us time to determine if the grant can be amended and ascertain whether the grant as written is desired by the community at large.

## 7 **Action Items**

### 7.1 Consideration of Action Regarding Pescadero Marsh

- At the last Board meeting Pescadero residents expressed concerns regarding flooding, fish passage issues, fish kills in the Pescadero Marsh, and whether the RCD's IRWMP grant would address their concerns. Some requested that the RCD declare an emergency in the marsh. RCD Directors set a date for a special meeting to consider declaring an emergency. In the interim, it was not possible to achieve quorum for any particular time on that date. Also in the interim, the lagoon opened with no resulting fish kill, resulting in no apparent emergency situation. The lagoon has subsequently closed and may result in buildup of poor water quality and a fish die-off when the lagoon reopens.
- Nelson found that there are two kinds of declarations of emergency:
  - (1) Declare emergency to be allowed to do work to address the emergency before securing permits. This declaration is to complete a specific identified project and you still need to get all the permits after the fact.
  - (2) General declaration of a state of emergency. California Government Code (Section 8558, titled the California Emergency Services Act) gives the governor, the governing body of a city or county, or an official designated by that governing body authority to declare a state of emergency. RCDs do not have that authority. Generally, the purpose is to provide for release of certain emergency funds and grants additional powers to the governing authorities.
  - Nelson investigated the idea of declaring a "resource emergency," which was proposed at the last meeting. No such designation currently exists. Nelson spoke with a number of people about this and it is not at all clear what it would accomplish or provide other than publicly expressing the RCD's concern about conditions in Pescadero, which could also be accomplished in other ways.
- Nelson discussed measures in which the RCD might be involved.
  - Nelson distributed a draft letter to Rodney McInnis (National Marine Fisheries Service), Ruth Coleman (California State Parks), Chuck Bonham (Department of Fish and Game), and Supervisor Don Horsley (San Mateo County Board of Supervisors) regarding conditions in Pescadero Marsh (Attachment C). Guests and directors discussed the letter and proposed including John Laird, head of the state Resources Agency. Guests and directors stated their support of the letter. No opposition was expressed.
  - Nelson was contacted by NOAA Restoration Center regarding a draft project proposal to keep the lagoon open this summer and fall to prevent build up of anoxic water. They are looking for partners. Nelson told them we were interested, but wanted to ensure that the residents of Pescadero were behind the project. People she has asked have said they support this interim action.
  - Nelson discussed the State level of interest in Pescadero right now. Supervisor Horsley contacted Assemblymember Jerry Hill to request assistance to address conditions in

Pescadero, particularly flooding. As a result, Assemblymember Hill called for a meeting on Monday February 13, 2012 and asked Nelson to attend. Because she had heard support from Pescaderans for NOAA's proposal, Nelson brought it up during that meeting.

- There was discussion among guests about their support for the project to keep the lagoon open and a desire for a specific project to address flooding. Guests discussed what they felt was the County's role and responsibilities in the context of limited County resources.
- BJ Burns expressed his interest in the RCD's commitment to dredging Butano Creek and using the IRWMP grant for immediate action. There was discussion about whether or not the grant can be amended to do that work, and whether other entities in the community, such as CASE, could also do that work. The IRWMP grant is limited to planning, and not for implementation. There are immediate needs in the community that should be pursued independent of this grant.
- Howard suggested that the landowners within that area of concern should have some sort of a plan for something that would address all the issues. It is smart to pursue the management of opening the lagoon, but also continue to pursue the other issues within the Marsh and have a plan. If another big storm hits adjacent landowners will be much better prepared to apply for funding to dredge if they have a plan, and that is more effective than just scooping out sediment on either side of the bridge. You have to be prepared to move quickly.
- Howard stated that the NRCS is willing to help any landowner and provide technical assistance and any financial assistance available where we are invited by landowners. Where we are not invited, we don't get involved.
- Howard advised that adjacent landowners that want to cooperate with the community, the agencies, and the RCD to get something done will have better results if they already have a plan, even if State Parks does not want to be involved. The NRCS would be willing to be a part of that, and we are hearing our agency partners being supportive of that as well. He was heartened by the productive and positive discussion that has happened tonight.
- There was further conversation about dredging, including unknowns that would be required for permits, including how deep, what shape the channel would be, how wide it should be, etcetera, as well as the need to consider alternatives under CEQA.
- There was discussion about the need for community consensus about whether or not they would like to change the grant from looking at long term solutions to interim solutions and whether or not the grant can be so amended.
- Nelson asked if Howard thinks we could amend the grant to develop a strategy in order to fall under the NRCS Emergency Protection Grant when the conditions are right.
- There was discussion of the NRCS Emergency Watershed Protection Program (EWP) and whether or not this might be a resource to the community for flooding. Howard will look into the program and report back next month.
- Director Kramer requested a one page outline/scope of work from community members requesting RCD support for dredging that would state what exactly dredging

would entail. Nelson said that would help her as well, and would help efforts to amend the grant. Guests agreed to provide that document.

**8     Adjourn**

- Allen adjourned the meeting at 8:42 pm.

## **Attachment A**

### **San Mateo County Resource Conservation District**

#### **MEMORANDUM**

Date: February 9, 2012

To: San Mateo County Resource Conservation District Board of Directors

From: Karissa Anderson

Re: Livestock and Land Program Workshop Evaluations, 2011

---

San Mateo County Resource Conservation District (SMCRCD) held three technical assistance workshops in coastal San Mateo County in October and November, 2011 to kick off the Livestock and Land Program. The workshops were designed to provide an overview of water quality issues in San Mateo County as well as practical examples of ways livestock facility owners and operators can manage mud, dust, erosion, and manure to improve water quality runoff from their sites. The workshops included:

Workshop 1 - October 25, 2011 - Introduction to the Livestock and Land Program  
Workshop 2 - November 14, 2011 - Demonstration Site Tour  
Workshop 3 - November 29, 2011 - Managing Mud, Dust and Manure

The following are highlights from evaluations for the first three of six workshops planned for coastal San Mateo County in 2011-12.

- 41 people total attended the workshops
- Average evaluation score was 4.55 out of 5 for areas surveyed (satisfaction with the speakers, content, materials, and overall workshop)
- Over 1200 acres of land were represented by attendees, ranging from less than one acre to over 100 acres
- The workshops reached people with cattle, horses, goats, donkeys, sheep, llamas, alpacas, ducks, and chickens.
- Evaluations indicated that people would use the information from the workshops for:
  - Drainage evaluation
  - Manure composting
  - Pasture/mud management
  - Gutters are going on animal barn

## Attachment A

- Water saving ideas
  - Use of consultation for planning a manure bin
  - Paddock construction & water management
  - Change of equine bedding for better composting
  - Rainwater catchment issues
  - Mud reduction
- 12 attendees requested site visits to their own properties
  - Two of the attendees provided the following feedback that they are implementing best management practices on their own:

*"I wanted to thank you guys for putting on the manure and mud management workshops. My husband took one and sent out the notes to fellow ranch employees and we told a friend of ours about the workshops and she attended one and is changing the whole way they are managing the horse boarding area. Very helpful! Thank you and keep me posted if you plan to do anymore."*

*"I never took the opportunity to write and thank you for your last workshop... I got my horses out of the mud and have manure composting... very good... look forward to the pie ranch workshop..."*

## **Livestock and Land Program – San Mateo County Technical Assistance Workshops Fall 2011**

### **Overview**

San Mateo County Resource Conservation District (SMCRCD) held three technical assistance workshops in coastal San Mateo County in October and November, 2011 to kick off the Livestock and Land Program. The workshops were designed to provide an overview of water quality issues in San Mateo County as well as practical examples of ways livestock facility owners and operators can manage mud, dust, erosion, and manure to improve water quality runoff from their sites.

Working with a Stakeholder Advisory Committee (SAC), SMCRCD planned a series of workshops, selected dates, and locations. Initially two overview workshops were scheduled for October. The first was held on October 25 in the Pescadero area, but the second had to be rescheduled for late November due to low registration response. A demonstration site tour was held to provide an opportunity to understand site planning and visit a manure bunker and composting facility. The workshops included:

- Workshop 1 – October 25, 2011 – Introduction to the Livestock and Land Program
- Workshop 2 – November 14, 2011 – Demonstration Site Tour
- Workshop 3 – November 29, 2011 – Managing Mud, Dust and Manure

The workshops were promoted to the public using the following means:

- Announcements sent to SMCRCD's distribution lists via email and a mailed flier
- Emails sent to SAC members to forward to personal contacts
- SMCRCD information booth at the *Day of the Horse* event in early October
- A flier posted at area feed and tack stores and community gathering places
- A press release sent to area newspapers
- Event listings posted at community websites (i.e., Craigslist, Patch.com, Coastsider.com, Bay Area Equestrian Network and local yahoo groups for Skyline and La Honda)

A total of 43 people pre-registered for the workshops and 41 people attended, including representatives of technical assistance agencies and public land managers. Near the close of





## Attachment A



### San Mateo County Resource Conservation District Livestock and Land Workshop Summary, Fall 2011

each workshop, all attendees were asked to voluntarily complete an evaluation form. Thirty-seven (37) total evaluations were received from the three workshops.

Overall the average score for the workshops was 4.55 out of 5 for all areas surveyed including satisfaction with the speakers, content, materials, and overall workshop. Comments included:

- Great job! Good agenda, scheduling and flow
- Thank you for the workshop - got me thinking about a number of issues I was unaware of
- Thought speakers were great short and sweet inside and plenty of time to see everything outside
- Great presentations
- This was great! Thanks for doing it
- Fantastic workshop, thanks for inviting us! Really impressed with quality/content and knowledge of presenters

Overall, 97% of those completing evaluations indicated the workshop had met their needs. The one respondent who indicated the workshop had not met their needs commented they had wanted in-depth information than provided in an introductory workshop, but otherwise rated the workshop highly. We received an email from one of the recipients after the workshop that we wanted to share as it gives a sense of the impact these workshops have had in the livestock owning community:

*I wanted to thank you guys for putting on the manure and mud management workshops. My husband took one and sent out the notes to fellow ranch employees and we told a friend of ours about the workshops and she attended one and is changing the whole way they are managing the horse boarding area. Very helpful! Thank you and keep me posted if you plan to do anymore.*

Both small ranchettes and larger ranches were represented by participants at the workshops. In total, respondents owned or operated nearly 1,200 acres, ranging from operations of 1 acre or less to more than 100 acres. As expected, most attendees reported having horses on their property as their main livestock, but one large cattle operation (over 600 head of cattle) representative participated and owners of small numbers of donkeys, goats, sheep, llamas, alpacas, ducks, and chickens also attended.

When asked how they anticipated they would use the information received at the workshop, respondents listed the following:

- Drainage evaluation and composting
- Manure composting. Water run-off. Would love a site evaluation
- I will most likely contact RCD in my area prior to building a barn/setting up manure area
- Pasture/mud management
- Gutters are going on our animal barn next month for sure!
- Managing manure compost pile (time and rotation and ideal temp)
- There are a number of things I can do to improve our composting.
- There are also a few water saving things I can do.
- Manure composting!

## Attachment A



### **San Mateo County Resource Conservation District Livestock and Land Workshop Summary, Fall 2011**

- Use of consultation for planning our manure bin
- Paddock construction & water management
- Will look at area - use a site map to draw out barn/arena/manure storage locations
- Change of equine bedding for better composting
- Manure bunker construction tips
- Use more than one composting bin, rainwater catchment issues
- Informative, practical - composting/pasture management attention
- BMPs, organic exchange website info
- Mud reduction

Nearly 55% of respondents (12) were interested in obtaining a site visit. Of those that were not interested, several indicated they already use the RCD as a resource. Another two participants kept livestock outside San Mateo County, but indicated they would contact their local RCD office for assistance. Subsequent to the workshops, SMCRCDD made four site visits to properties, scheduled two follow-up visits with staff from the Natural Resources Conservation Service (NRCS) to create recommendation reports, and received requests for site visits from two other property owners who attended workshops.

We learned from participants that the contact from SMCRCDD was the most effective method of outreach (56% of respondents indicated they heard directly from SMCRCDD), followed next by receiving personal contact from a co-worker, friend or colleague to invite them to the workshops (22% of respondents), and seeing a flier at a community gathering place was the next most effective method indicated by 18% of respondents. We asked for suggestions from participants on how to get the word out better and heard that outreach with the Bay Area Equestrian Network, attendance at trade fairs, and targeted outreach in underserved areas would be helpful.

Respondents were also asked for suggestions about how to improve future workshops as well as topics they would like to see covered. We received these responses:

- See about reducing overlap between speakers
- Go more in depth on some topics - future classes should provide
- Keep it user friendly and low tech as you have; testimonial speakers always a great idea
- Leave time always to answer questions
- There was lots of crossover of topics
- Workshop was great, love to attend one on greywater/rainwater catchment
- Need a second break or invitation to sit on floor/move your body
- I have always found them quite wonderful
- Keep doing them!
- It's the best I've attended
- Composting and what to do with end product
- More exact composting methods
- Keep doing them!
- Talk about invasive plants, seed with non-noxious weeds in barren areas & feed; horse diapers to control seed dispersal
- More variety in presentation format. Hands on? I attended a workshop once with an "Advice Clinic" - allow property owners to present current issues and offer mini-advice/recommendation plans

## Attachment A



### **San Mateo County Resource Conservation District Livestock and Land Workshop Summary, Fall 2011**

- Like to have questions wait until the speaker has completed his presented. It really slowed down the next to last speaker

We are now incorporating this feedback into our planning for a Spring 2012 workshop.



**San Mateo County Resource Conservation District  
Livestock and Land Workshop Summary, Fall 2011**

**Workshop Summary:**

**Monday, October 25, 2011 – Introductory Workshop**

The kick-off workshop for the San Mateo County Livestock and Land Program was held Monday, October 25, 2011 at Harley Farms in Pescadero, San Mateo County. Harley Farms is a livestock facility with goats and a cheese-making facility. The owner, Dee Harley, has worked with SMCRCDD to implement a variety of site improvements at her facility.

At this workshop as well as the two subsequent ones, participants were greeted, asked to sign in, and received a binder containing workshop materials. The binders included copies of each presenter's presentations as well as pertinent articles and fact sheets, several produced previously for the Livestock and Land program in Santa Cruz County. Attendees received a workshop agenda that included contact information for presenters.

Kellyx Nelson, San Mateo County RCD Executive Director, welcomed participants and invited everyone to introduce themselves. Kellyx provided an overview of the general purpose and function of the RCD and NRCS agencies, the Livestock and Land program history, and purpose of this series of workshops. She explained how landowners could work with RCD and NRCS to obtain technical assistance and funding for site improvements.

Next, Karissa Anderson, Livestock and Land Program Coordinator for SMCRCDD, provided an overview of water quality issues on the San Mateo County coast. She explained the designation of "Area of Special Biological Significance" (ASBS) and the creeks that drain into this protected marine reserve. She covered priority water quality issues and what is being done to reduce water quality impacts from equestrian and livestock facilities in the County. She also described the role SMCRCDD plays in monitoring "first flush" and providing assistance to landowners interested in monitoring water quality on their properties.



*Karissa Anderson of SMCRCDD covered water quality issues*

Susan Hoey-Less from the Natural Resources Conservation Service, Salinas Service Center, then provided an overview of topics related to reducing erosion, mud and dust from equestrian facilities. She showed examples of typical equestrian facilities where erosion is occurring causing dust and mud. She introduced how to understand your site including the difference between pastures and paddocks, ways to manage pastures, and ideas for how to reduce water quality runoff from the facility. She had lots of examples of how Best Management Practices have been implemented in horse facilities elsewhere and was able to answer a lot of participant questions.



*Susan Hoey-Less of NRCS on ways to reduce erosion, mud and dust*



**San Mateo County Resource Conservation District  
Livestock and Land Workshop Summary, Fall 2011**

Sheila Barry of the University of California Cooperative Extension discussed her work in Santa Clara County helping cattle operations to manage their pasture. She covered topics that were also of interest to equestrian owners including spreading of manure, rotational grazing, and water runoff issues.

Rich Casale of NRCS-Santa Cruz County covered manure management and composting options. Rich was previously the District Manager for San Mateo County for more than 20 years prior to transferring to the Santa Cruz County RCD. Rich also

owns the Red Tail Ranch with several horses on the property. He brought experiences from his professional and personal life together to discuss ways to manage manure including spreading, disposal, and composting. While his overview was comprehensive, it was clear from the participants that composting is a topic of great interest requiring a more detailed follow-up workshop.

Beau Schoch of NRCS-Salinas Service Center and Schoch Dairy provided an example of how site planning and improvements could be incorporated in a dairy farm included rotational grazing, manure spreading, and regarding the pasture to reduce runoff. A second success story from the field was provided by Gordon Claassen of Swanton Pacific Ranch that runs 650 heads of cattle as a demonstration ranch for students from Cal Poly San Luis Obispo in northern Santa Cruz County. He described similar efforts to make site improvements in order to increase livestock health and reduce water quality impacts.

Kellyx Nelson then closed the workshop by thanking participants for their attendance and attention, inviting them to complete evaluation forms, and to discuss site needs, interest in a site visit, or application for funding with RCD and NRCS staff present. She thanked presenters for their time, reminded participants about the demonstration site tour scheduled for November 14 and asked for help spreading the word about the workshops.



*Sheila Barry on pasture management and Rich Casale on manure management issues*



*Beau Schoch and Gordon Claassen shared best practices and success stories*



## Attachment A



### San Mateo County Resource Conservation District Livestock and Land Workshop Summary, Fall 2011

#### Evaluation Summary – October 25 Introductory Workshop

# of attendees: 14

# of respondents: 14

1. Did the workshop meet your needs? 11 (90%) Yes 1 No
2. How would you rate the following (with 1 = Poor and 5 = Excellent)?
  - a. Speakers Average rating: 4.57
  - b. Content Quality/Use Average rating: 4.43
  - c. Practical Examples Average rating: 4.36
  - d. Materials Average rating: 4.57
  - e. Overall workshop Average rating: 4.57
3. Of the information you learned today, what will you use and home/work?
  - Drainage evaluation and composting
  - Composting information for gardening purposes
  - Manure composting. Water run-off. Would love a site evaluation & report
  - I will most likely contact RCD in my area prior to building a barn/setting up manure area
  - Pasture/mud management
  - Gutters are going on our animal barn next month for sure!
  - Managing manure compost pile (time and rotation and ideal temp)
  - Keep clean water clean/how to manage run off
  - Rotational grazing considerations and composting
  - Pasture management & rotation
4. What other information were you hoping to obtain?
  - Smaller facility management
  - Include ranch tour; more interaction with questions and answers with participants
  - Rainwater harvesting is an interest to us
  - This was a great workshop. I had been looking for a workshop that covers this topic (manure management) for a long time
  - This one provided answers to many of my questions
  - I was hoping for more specific information on pasture management, as an overview it was very good
  - I've got questions about my paddock floor surface now, didn't realize there was an issue here
  - Still some questions about seeding our pastures
  - Drainage planning, native grasses for pasture (these were covered but I could use more detail)
5. Information about the participants

Eight participants provided information about their properties in the evaluation forms. Together they owned about 210 acres, on average about 21 acres per participant. Size varied – four of the participants owned properties of less than five acres while one owned

## Attachment A



### **San Mateo County Resource Conservation District Livestock and Land Workshop Summary, Fall 2011**

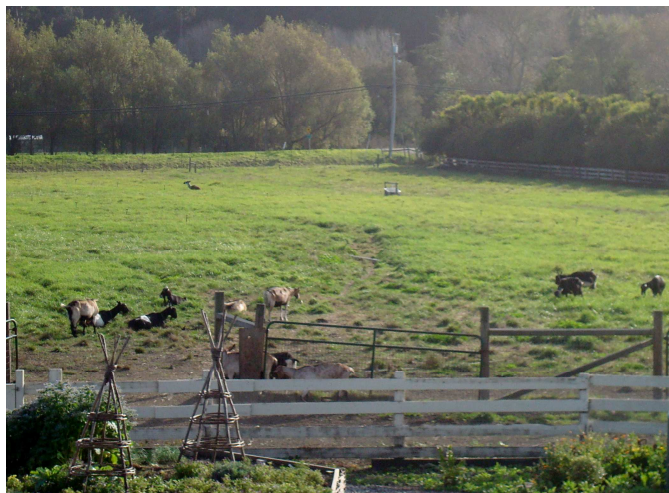
more than 100 acres. Together they manage over 700 livestock from one operation with 650 cows but the others having one to eight horses, some goats, and chickens on their properties.

6. Interest in Site Visits

Eleven participants provided a response regarding interest in a site visit. Five (45% of respondents) were interested in scheduling a site visit and provided contact information. Two were not interested, one because the owner is already working with the RCD and uses the agency as a resource. The other respondent not interested in a site visit indicated that was due to living outside the area, but noted they would contact the RCD for their area for assistance. Two others weren't sure if they were interested in a site visit or felt it wasn't appropriate.

7. Interest in Demonstration Funding

Nine participants provided a response regarding interest in demonstration site funding, of these three were interested in learning more about applying.



*Harley Farms*



**San Mateo County Resource Conservation District  
Livestock and Land Workshop Summary, Fall 2011**

**Workshop Summary:**

**Monday, November 14, 2011 – Demonstration Site Tour**

The next San Mateo County Livestock and Land Workshop was held on Monday, November 14 at the Millwood Ranch in Pacifica, CA. This workshop was designed to provide more information about site planning and manure management and tour the Ranch's new manure bunker and composting facility. We were grateful to Ranch owner Millard Tong for hosting us at his ranch and touring us around his property.

Karissa Anderson welcomed the participants and invited everyone to introduce themselves. She provided an overview of the role of the RCD and NRCS and the Livestock and Land Workshop. She then provided an overview presentation about water quality issues in San Mateo County and how these relate to equestrian and livestock operations.

Steve "Slim" Butler, a Certified Erosion Control Specialist, talked about how to analyze your site and come up with a plan for site improvements. He provided a number of examples of his work including before and after photos that were very informative. His work in particular focuses on looking at surface water runoff and ways to relocate facilities on the property, make use of vegetative buffers, or install simple improvements like gutters or kick plates to help manage water runoff. Slim had provided Millwood Ranch with its design for the manure bunkers so provided an overview before participants toured the site.

Slim and Millard then led participants to the manure bunker and discussed how they constructed the bunker and are initiating a manure composting process. Millwood Ranch houses over 160 horses and is bisected by a tributary to a creek that runs to the Pacific Ocean. The Ranch is a Livestock and Land demonstration site and has had a partnership with the SMCRCDD to do water quality monitoring and technical assistance for two years.



*Slim Butler discussed site planning and BMPs for equestrian facilities*



*Millard Tong, owner of Millwood Ranch, provides a site orientation*



*Site Tour Photos – Slim describing manure bunker construction and manure composting on Millwood Ranch*



## Attachment A



### San Mateo County Resource Conservation District Livestock and Land Workshop Summary, Fall 2011

#### Evaluation Summary – November 14 Site Tour

# of attendees: 13

# of respondents: 12

1. Did the workshop meet your needs? 12 (100%) Yes 0 No
2. How would you rate the following (*with 1 = Poor and 5 = Excellent*)?
  - a. Speakers Average rating: 4.67
  - b. Content Quality/Use Average rating: 4.33
  - c. Practical Examples Average rating: 4.33
  - d. Materials Average rating: 4.25
  - e. Overall workshop Average rating: 4.67
3. Of the information you learned today, what will you use and home/work?
  - There are a number of things I can do to improve our composting. There are also a few water saving things I can do.
  - Composting information at work
  - Composting
  - Compost bins
  - Use of consultation for planning our manure bin
  - Manure composting
  - Paddock construction & water management
  - Paddock management ideas
  - Will look at area - use a site map to draw out barn/arena/manure storage locations
  - Change of equine bedding for better composting
  - Manure bunker construction tips
4. What other information were you hoping to obtain?
  - More on how to compost
  - Looking for trail access in areas I've not yet been around here
  - Handouts which were given out in binders
  - Manure management for large facilities (100+ horses)
5. Information about the participants

Nine participants provided information about their properties in the evaluation forms. Together they owned about 320 acres, on average about 32 acres per participant. Size varied – five of the participants owned properties of less than ten acres while two owned more than 35 acres and one owned over 160 acres. Together they manage nearly 400 livestock over 95% were horses. Participants also had small numbers of donkeys, goats, cows, and llamas.
6. Interest in Site Visits

Four of the eight respondents were interested in a site visit from the RCD, one respondent had already received assistance but was interested in receiving more. One respondent

## Attachment A



### **San Mateo County Resource Conservation District Livestock and Land Workshop Summary, Fall 2011**

lived outside the area but intended to contact the RCD in her area. One was interested in a site visit but needed to contact the Board of Directors first and indicated she would follow up later.

7. Interest in Demonstration Funding

Five participants were interested in demonstration site funding.



**San Mateo County Resource Conservation District  
Livestock and Land Workshop Summary, Fall 2011**

**Workshop Summary:**

**Tuesday, November 29, 2011 – Managing Mud, Dust and Manure**

The final fall technical assistance workshop was held on Tuesday November 29 in Moss Beach, San Mateo County, and focused on managing mud, dust, and manure, including a focus on manure composting. Because this workshop also served as the second introductory workshop that had to be rescheduled due to low registration, some overview material was also presented to participants. The workshop was held at the community room at the Pillar Point Ridge Manufactured Home Community.

Karissa Anderson, Livestock and Land Program Coordinator for SMCRCDD, welcomed participants and invited everyone to introduce themselves. She provided an overview of the general purpose and function of the RCD and NRCS agencies, the Livestock and Land program history, and purpose of this series of workshops. She explained how landowners could work with the RCD and NRCS to obtain technical assistance and funding for site improvements. Karissa then provided an overview of water quality issues on the San Mateo County coast. She explained the designation of “Area of Special Biological Significance” (ASBS) and the creeks that drain into this protected marine reserve. She covered priority water quality issues and what is being done to reduce water quality impacts from equestrian or livestock facilities in the County. She also described the role the RCD plays in monitoring “first flush” as well as providing assistance to landowners interested in monitoring water quality on their properties.

Susan Hoey-Less from the Natural Resources Conservation Service, Salinas Service Center, then provided an overview of topics related to reducing erosion, mud and dust from equestrian facilities. She showed examples of typical equestrian facilities where erosion is occurring causing dust and mud. She introduced how to understand your site including the difference between pastures and paddocks, ways to manage pastures, and ideas for how to reduce water quality runoff from the facility. She had lots of examples of how Best Management Practices have been implemented in horse facilities elsewhere and was able to answer a lot of participants’ questions.



*Susan Hoey-Less provides an overview on managing mud, dust and erosion*



*Otis Johnson provided samples of manure compost products*

Dr. Philip Bellamy, area veterinarian, provided an overview of the impact of mud, dust and manure on horse health and talked about strategies for keeping horses healthy. Participants welcomed his comprehensive information about horse health and had many questions for him.

Otis Johnson, a master composter and master gardener from the Santa Cruz area then provided an overview and details on manure composting. Otis has experience

## Attachment A



### San Mateo County Resource Conservation District Livestock and Land Workshop Summary, Fall 2011

designing horse manure composting facilities and was able to provide many practical examples about how to approach manure composting from how to design storage facilities for the manure, how to measure the temperature, rotate the pile, and ways to use the material after it has composted. He was peppered with many questions and there was a lot of interest in the information he was able to provide.

Our final speaker was Aniko Milan, the owner of an equestrian facility in Santa Cruz County, who had received technical assistance from the Livestock and Land Program there. She brought many before and after photos and her testimony really helped bring the information together for the participants. She described the kinds of problems she and her husband encountered on the property, what projects they were able to do themselves on the property to begin to reduce erosion on site, what projects were completed with help from the RCD, and what projects they still hope to complete in the future. Her examples were very inspiring to participants and pulled the information together in a very comprehensive way.



*Aniko Milan, co-owner of Milan Ranch in Santa Cruz County, provided a real world success story*

Karissa Anderson then closed the workshop by thanking participants for their attendance and attention, inviting them to complete evaluation forms, and to discuss site needs, interest in a site visit, or application for funding with the RCD and NRCS staff present.

### Evaluation Summary – November 29 Managing Mud, Dust, and Manure

# of attendees: 14

# of respondents: 11

1. Did the workshop meet your needs? 11 (100%) Yes 0 No
2. How would you rate the following (with 1 = Poor and 5 = Excellent)?
  - a. Speakers Average rating: 4.82
  - b. Content Quality/Use Average rating: 4.82
  - c. Practical Examples Average rating: 4.73
  - d. Materials Average rating: 4.27
  - e. Overall workshop Average rating: 4.82
3. Of the information you learned today, what will you use and home/work?
  - Wormer that does not break down in compost
  - A little bit from everyone. The order of the speakers was helpful too so the demo ranch talk showed the topics covered in real usage
  - Otis Johnson compost management
  - Use more than one composting bin, rainwater catchment issues

## Attachment A



### **San Mateo County Resource Conservation District Livestock and Land Workshop Summary, Fall 2011**

- Informative, practical - composting/pasture management attention
- BMPs, organic exchange website info
- Coordinate with ranch owners on proper manure management & soil/water management @ Rancho Corral de Tierra
- Mud reduction
- Spread the word on composting
- Loved Dr. Bellamy's info & the master composter was very informative

#### **4. What other information were you hoping to obtain?**

- Pasture management
- More about filter zones and managing runoff
- Everyone had horses so direct to them which is understandable, I translated info to alpaca use
- More information about manure spreading and utility of biochar
- Specific examples of San Mateo County issues
- Practical lessons in how to maintain
- Funding for creating manure bunkers of compost

#### **5. Information about the participants**

Six participants provided information about their properties in the evaluation forms. Together they owned about 507 acres, on average about 85 acres per participant. Size varied – two of the participants owned properties of less than five acres while three owned more than 100 acres. Together they manage nearly 230 livestock over 60% were horses. A medium size cattle operation (50 heads) was represented as well as small numbers of sheep, alpacas and ducks.

#### **6. Interest in Site Visits**

Three of the five respondents to this question indicated they were interested in a site visit from the RCD. One indicated they did not have a site now, but were looking to acquire one and begin a horse boarding operation and would seek assistance after selecting a potential site. One respondent would be interested in the future.

#### **7. Interest in Demonstration Funding**

Four participants were interested in demonstration site funding.

# Livestock and Land Program

## 2011 Workshops



San Mateo County RCD Board of Directors Meeting  
February 16, 2012



# Partners

## Attachment B



San Mateo County Resource Conservation District

# Program Goals

- Education and technical assistance
- Demonstration sites
- Confined animal community “owns” water quality





# 2011 Workshops



# 2011 Workshops



# Workshop Evaluations

- ◆ 41 attendees, 37 evaluations
- ◆ Average score was 4.55 out of 5



- ◆ Reached owners of cattle, horses, goats, donkeys, sheep, llamas, alpacas, ducks, and chickens





## Attachment B

*"I wanted to thank you guys for putting on the ... workshops. My husband took one and sent out the notes to fellow ranch employees and we told a friend of ours about the workshops and she attended one and is changing the whole way they are managing the horse boarding area. Very helpful! "*

\*\*\*\*\*

*"I never took the opportunity to write and thank you for your last workshop... I got my horses out of the mud and have [started] manure composting..."*



# Technical Assistance

## Site Planning Recommendations for Drainage Management

*Site Visit November 11, 2011*

For: \_\_\_\_\_





## 1. Drainage and runoff management for pasture (cont'd)

- **Attachment B**  
• *Vegetated swale from pasture to existing drainage ditch*





## 2. Drainage and runoff management for barn and driveway (cont'd)

### • Attachment B

- *Roadside ditch*
- *Spread runoff onto lower pasture OR continue ditch along road and outlet to creek below culvert*



(Above) Roadside ditch will collect drainage from subsurface drain from barn

(Below) Drainage ditch will run from outlet of barn drainage down driveway and either:  
A – spread onto lower pasture on neighbor's property *or*  
B – continue ditch along road and outlet to creek below culvert



# Successes

- ◆ Served customers on over 1200 acres
- ◆ Many new customers
- ◆ 11 site visits
- ◆ Independent implementation of BMPs
- ◆ Installed large-scale manure composting project for 60+ horses





## Thoughts about the future

- ◆ Expand outside ASBS
- ◆ Woodside community
- ◆ Funding to maintain program
- ◆ Dwindling NRCS resources
- ◆ Manure exchange program



*Thank you*

Karissa Anderson

Conservation Associate

San Mateo County Resource Conservation District

[karissa@sanmateorcd.org](mailto:karissa@sanmateorcd.org)

650.712.7765 x104

## Attachment C

San Mateo County



**RESOURCE**  
CONSERVATION DISTRICT

650.712.7765 | PHONE  
650.726.0494 | FAX

625 Miramontes Street, Suite 103, Half Moon Bay, CA 94019  
[www.sanmateorcd.org](http://www.sanmateorcd.org)

February 15, 2012

Rodney McInnis  
Regional Administrator  
Southwest Regional Office  
National Marine Fisheries Service  
501 West Ocean Boulevard, Suite 4200  
Long Beach, CA 90802-4213

Chuck Bonham  
Director  
Department of Fish and Game  
1416 9<sup>th</sup> Street, 12<sup>th</sup> Floor  
Sacramento, CA 95814

Ruth Coleman  
Director  
California State Parks  
1416 9<sup>th</sup> Street  
Sacramento, CA 95814

Supervisor Don Horsley  
San Mateo County Board of Supervisors  
Hall of Justice  
400 County Center  
Redwood City, CA

### **RE: Conditions in Pescadero Marsh**

Dear Ms. Coleman, Mssrs. McInnis and Bonham, and Supervisor Horsley:

On behalf of the San Mateo County Resource Conservation District (RCD), I write you regarding ongoing conditions in the Pescadero Marsh that result in ongoing fish kills, regular road closures due to flooding that pose a threat to public safety, and impediments to fish reaching ancestral habitat in Butano Creek.

We implore you to consider all immediate actions to avoid a fish die-off and flooding of Pescadero Road next fall and to explore sustainable ways to restore access for fish to Butano Creek. Specifically, we ask for immediate resolution to any agency bottleneck that impedes progress towards best resource management.

We also ask you to balance the consideration of long-term solutions with immediate needs that may require interim measures. For example, we understand that resource agencies are considering a project to keep the lagoon open this fall to prevent the buildup of poor quality water that could cause a fish kill and worsen flooding. We support this innovative interim management approach and have offered our assistance for permitting, labor, recruiting and scheduling volunteers, water quality monitoring, or other assistance as appropriate.

## Attachment C

As a non-regulatory special district in coastal San Mateo County that provides technical assistance to private and public landowners, the RCD stands ready to assist you as appropriate in implementing solutions posed by your agencies.

Thank you for your time and consideration of this urgent matter. Please do not hesitate to contact me at any time.

Sincerely,

Kellyx Nelson  
Executive Director

DRAFT