

Regular Meeting of the Board of Directors
September 14, 2016
6:30 pm – 8:30 pm
Location: RCD Office

1. Call to Order
2. Introduction of Guests and Staff
3. Public Comment- The Board will hear comments on items that are not on the agenda. Comments are limited to three minutes per person. The Board cannot take action on an item unless it is an emergency as defined under Government code Sec. 54954.2.
4. Approval of Agenda
5. Consent Agenda 5.1. August 18, 2016 Draft Regular Meeting Minutes 5.2. July 22, 2016 Draft Special Meeting Minutes
6. Discussion Items 6.1. Executive Director Report 6.2. Directors' Reports 6.3. 2015 Crop Report for San Mateo County presented by Adria Arko, RCD Program Assistant & Agricultural Ombudsman 6.4. Permitting Case Study presented by Sara Polgar, RCD Conservation Program Specialist
7. Adjourn

Public records that relate to any item on the open session agenda for a regular board meeting are available for public inspection. Those records that are distributed less than 72 hours prior to the meeting are available for public inspection at the same time they are distributed to all members, or a majority of the members of the Board. The Board has designated the San Mateo RCD office, located at the address above, for the purpose of making those public records available for inspection.

**Minutes of the Regular Meeting of the Board of Directors
September 14, 2016
Location: RCD Office**

Directors present: Barbara Kossy, TJ Glauthier, Kevin Watt, Jim Reynolds

Staff present: RCD – Kellyx Nelson, Adria Arko, Sara Polgar
NRCS – Jim Howard

Guests: None

1 Call to Order

The meeting was called to order at 6:30pm.

2 Introduction of Guests and Staff

Sara Polgar was introduced. She previously volunteered for the RCD and was brought on as an employee as a Conservation Program Specialist. Sara has more than 10 years of experience as a planner with the San Francisco Bay Conservation and Development Commission working with partner agencies and local governments on planning for sea level rise and other coastal hazards. She holds a bachelor's degree in biology from Stanford University and a master's degree in Environmental Science and Management from the Bren School at UC Santa Barbara.

3 Public Comment

- Nelson shared a letter from San Mateo County Supervisor Don Horsley (ATTACHMENT A). State Parks released a general plan for the Pigeon Point Lighthouse area, and that prime agricultural land may be converted to a campground. Public comment period is closed, but Supervisor Horsley submitted this letter and there may be significant interest in the agricultural community that may not fully understand that this process is underway and public comment has closed. CEQA is expected to be completed by December.
- Kossy believes the area is tricolored blackbird habitat.
- Glauthier asked if there had been a response to the letter from State Parks. Nelson doesn't know.
- Reynolds said that Pescadero Community Advisory Council (PMAC) heard about the issue. Nelson is not aware of PMAC comments on the plan.

4 Approval of Agenda

- Reynold moved to approve the agenda, Kossy seconded, unanimous approval.

5 Consent Agenda

5.1 August 18, 2016 Draft Regular Meeting Minutes

5.2 July 22, 2016 Draft Special Meeting Minutes

- Reynolds moved to approve the consent agenda with a minor grammatical correction, Watt seconded, unanimous approval.

6 Discussion Items

6.1 Executive Director Report – Kellyx Nelson (ATTACHMENT B)

- Lots of projects going to construction, which are detailed in the Executive Director report.
- Butano Creek Floodplain Restoration Project may wrap up this coming week, which is earlier than expected. Nelson has taken a few Board members out to the project site.
- Glauthier asked about Burnham Strip plan. When Granada Sanitary District asked to expand to become a Community Services District, they entered into an MOU with the RCD that says they must contract with us for resource management. RCD is currently working with them on a natural resource management plan, which will include stormwater, habitat, native plants, and weeds. Project won't really start until construction season is done- November.
- Reynolds asked about the large water storage project. Nelson noted this project is in partnership with Farm Bureau. RCD applied for funding to do a feasibility study for a large water storage project. Large storage could be more cost-effective than individual ponds to protect streams and provide ag water security. Also, many farms don't have the space to put a pond on their property. Reynold had questions of location, Nelson explained that that will be part of the feasibility study. Watt asked about management. Nelson said there are existing models. Glauthier asked about the Wildlife Conservation Board. Nelson explained it's a state agency. Farm Bureau is helping with cost-share, cash and in kind. They also have a lot of knowledge.
- Reynolds thanked Nelson for visit at Butano floodplain restoration project, and he asked about visiting Cloverdale ponds.
- Glauthier asked about Repetto pond. Nelson said it is starting next week with pre-construction work. Nelson said that the pond program starts with an irrigation audit, then we or the farmer will do improvements with infrastructure and management, and then RCD and partners will consider additional storage. Repetto implemented irrigation improvements. Construction will go on for a few weeks. Board members and Nelson discussed tours of pond projects.
- Nelson directed people to a video she posted of the Butano project on Facebook.

6.2 Directors' Reports

- Watt is going to the California Association of Resource Conservation Districts conference in November. Nelson said that the Board needs to appoint a delegate to vote at the next meeting. Watt had a meeting with TomKat and RCD staff with a member of the East Stanislaus RCD about a project to study compost on rangelands. It is a data sharing project. Watt explained that compost application can sequester carbon and they are going to test its impact at TomKat. The data from this project will be joined with existing monitoring at TomKat. Nelson said challenge of RCPP grant (which focuses on carbon farm plans) has been that NRCS hasn't approved it as a standard yet. The staff from East Stanislaus RCD is working statewide on a study to help establish standards. Howard says that there are concerns that have to be studied and this project will help. Nelson and Watt discussed Watt doing a presentation to the Board on conservation grazing.

- Kossy will be going to the Central Coast Weed Symposium. Nelson added that Neal Kramer will also be attending. Kossy is also going to the California Invasive Plant Council Symposium in November.
- Reynolds attended a PMAC meeting, where Deborah Hirst (Supervisor Horsley's office) spoke about the dredging project and fire station. Mike Polacek talked about the Butano Creek Floodplain Restoration Project. RCD was mentioned favorably. After the meeting, the PMAC also discussed managing the increasing numbers of tourists to the Pescadero area.
- Kossy and Nelson are on the County's tree ordinance review committee. RCD has been asking the County to look at the ordinance because it inadvertently protects eucalyptus.
- Glauthier said he went to the Harbor District meeting. Brittani Bohlke, RCD Water Resource Specialist, was on the consent agenda, and ended up being asked to give a short presentation, which she did very well with no preparation. Glauthier made a comment about supporting the RCD and Harbor District partnership.
- Nelson suggested that item 6.4 Permitting Case Study be presented on first.

6.4 Permitting Case Study presented by Sara Polgar, RCD Conservation Program Specialist (ATTACHMENT C)

- The intent of this discussion item was to give the Board a "deep dive" into permitting by discussing a current project in real time, not after it is completed.
- The RCD has been helping POST and San Mateo County address a gully that formed on Peninsula Open Space Trust property in just 40 hours within 20 feet of Cloverdale Road. It released over 4000 cubic yards into Butano Creek. The gully was caused in part by public infrastructure but formed on private land. RCD was invited to coordinate and facilitate addressing the gully.
- Polgar explained the case of the problem, the hydrology, and the permitting agencies involved.
- Howard said that it was a classic case of failing to understand hydrology.
- Polgar said that there is no quick fix to this issue.
- Glauthier asked if agencies were being responsive. Polgar and Nelson explained that all of the agencies are interested but are on different tracks. They are not integrated. Some are moving faster than others.
- Discussion focused on endangered species, how differently agencies consider emergency permits and define emergency.
- Watt offered aerial photos that TomKat has- fine resolution data to monitor the growth of the gully.
- Kossy thought that documenting these processes is helpful for potential streamlining opportunities or for future projects.
- Glauthier discussed the possibility of writing to Representative Anna Eshoo about challenges posed by the Army Corps of Engineers.

6.3 2015 Crop Report for San Mateo County presented by Adria Arko, RCD Program Assistant & Agricultural Ombudsman (ATTACHMENT D)

7 **Adjourn**

- The meeting adjourned at 8:22pm.

COUNTY OF SAN MATEO
DON HORSLEY
SUPERVISOR, 3RD DISTRICT

County Government Center
400 County Center, 1st Floor
Redwood City, CA 94063
650-363-4569
dhorsley@smcgov.org

September 9, 2016

Sheila Branon
California State Parks
303 Big Trees Park Road
Felton, CA 95018

Re: Pigeon Point Light Station State Historic Park

Dear Ms. Branon,

It has come to my attention that in May, the State Parks released a General Plan and Initial Study Mitigated Negative Declaration and Preferred Alternative for Pigeon Point Light Station State Historic Park. I understand that San Mateo County's Planning and Building Department was informed of this by the Coastal Conservancy. Joe LaClair sent a letter on August 2, 2016, on behalf of the Department outlining the requirements of our Local Coastal Program as they relate to Agricultural Policies, Sensitive Habitat Component, Shoreline Access, and Recreation Visitor-Serving Facility.

I represent the Coastsides on the San Mateo County Board of Supervisors and although I was not aware of the State Parks process during the public comment period, I would like to add my thoughts to the conversation, particularly as they relate to agriculture.

State Parks' intention to develop a long-range management tool is to be applauded. I am particularly excited about the potential of having the Lighthouse tower restored and re-opened to the public. I can and will support much of the work and hope that the park becomes even more of a focal point for San Mateo County tourism.

However, I am very concerned and cannot support the proposed conversion of Prime Agricultural Lands to campgrounds. This concern is not solely based on my personal goal to support our local agricultural community. It is also based on a concern related to consistency with our Local Coastal Program (LCP). The LCP does allow public recreation to be conditionally permitted (subject to a PAD and CDP permit) on prime land, however, reflecting the protection of agricultural land prioritized by the California Coastal Commission, the LCP requires the lease back of State Parks and recreation lands for agriculture. Specifically, San Mateo County Local Coastal Program Policy 5.33 states:



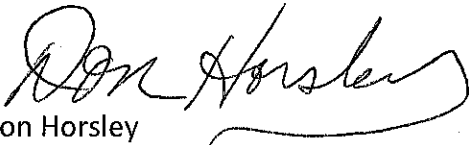
Attachment A

- a. As a condition of permit approval, require the State, where legally feasible to lease prime agricultural lands, and other lands suitable to agriculture, determined to be feasible for agricultural use, which would not endanger an existing sensitive habitat, to active farm operators on terms compatible with recreation and any adjacent habit use.

I encourage you to rethink the path you are on. Instead of converting this prime agriculture land into camping, recognize that the agriculture on that land is part of the historic nature of the park and return it to the use that it is intended for.

Please provide me a timeline of your next steps as this is not included on your public website. Please also include me personally in any future communication regarding this project. You can direct your communication to me via email at dhorsley@smcgov.org and via mail at 400 County Center, Redwood City, CA 94063. I look forward to hearing back from you at your soonest opportunity.

Sincerely,



Don Horsley
Supervisor, District 3

Cc: Supervisor Carole Groom
State Senator Jerry Hill
Assembly Member Rich Gordon
Pigeon Point Planning Team, Southern Service Center
Steve Monowitz, Director, San Mateo County Building and Planning
Jess Brown, Executive Director San Mateo County Farm Bureau
Walter Moore, President Peninsula Open Space Trust
Kellyx Nelson, Executive Direct, San Mateo County Resource Conservation District

**Executive Director Report
September 12, 2016**First Flush 2016

Pollutants build up across the landscape during dry weather and wash into creeks, storm drains, and the ocean during rainstorms. The RCD partners with the Monterey Bay National Marine Sanctuary to monitor water quality from storm drain outfalls into the ocean during the first significant storm of the season, i.e. "First Flush." Ten volunteers have committed to the event this year, including many seasoned veterans of the program. We held the training and dry run on Saturday, September 12th.

Toilet Rebate Program

The RCD is partnering with San Mateo County on a toilet rebate program for customers of CSA 7 (La Honda), CSA 11 (Pescadero), and Loma Mar Mutual Water Company. The County is offering up to a \$300 rebate for people who replace their old toilet with a WaterSense toilet that uses 1.28 gallons per flush. For more information visit <http://www.sanmateorcd.org/pilot-toilet-rebate/>.

Burnham Strip Resource Management Plan

The Granada Community Services District (GCSD) approved entering into an agreement with the RCD for \$15,000 to develop a resource management plan for the Burnham Strip that focuses on vegetation management, stormwater management, and riparian habitat improvements.

Large Water Storage Feasibility

The RCD submitted a grant application to the Wildlife Conservation Board to explore the feasibility of a large water storage project in the Pescadero-Butano watershed that would provide aggregated water supply reliability for farms while also reducing their dependence on creeks during the dry season when streamflows are low for wildlife. The San Mateo County Farm Bureau partnered on the application and offered a cash match and in-kind support if funded.

Cemetery Water Conservation

The RCD has completed irrigation evaluations for 6 cemeteries in the Town of Colma. Cemetery representatives have been very positive about the technical assistance and are eager to work with us on next steps to implement water conservation improvements. RCD staff is excited about the new partnership with the Town of Colma and the potential to working with additional cemeteries for water conservation.

Construction Updates*Butano Floodplain Restoration Project*

The floodplain restoration project is well underway. To prepare for construction, the creek was rerouted around project sites, access roads and a staging area were improved, and equipment was mobilized.

Attachment B

Selected live alders were strategically felled into the creek at two sites. The creek bank was lowered at one location to create a floodplain connector channel for water during two-year storm events. Most of the engineered rock ramp has been completed. Installation of large wood (tree stumps and root wads) at two sites is expected to be completed this week. Biologists monitor activities carefully to avoid impacts to protected species and other wildlife. Downstream turbidity measurements are taken regularly and have been consistently low.

San Gregorio Creek Habitat Enhancement Project

Preconstruction biological surveys are underway. On September 16th we will begin mobilizing equipment and construction will begin September 19th.

Repetto Farm Project

Preconstruction biological surveys are underway. The pond will be drained this week, allowing the site to dry, and construction will begin Monday September 26th.

Pilarcitos Road Repair Project

Preconstruction biological surveys are underway. On September 19th we will begin mobilizing equipment and construction will begin September 26th. This project has been delayed due to delayed funding commitments, other contractor commitments, and neighbor concerns about mobilization and access.

Cuesta La Honda Guild Projects

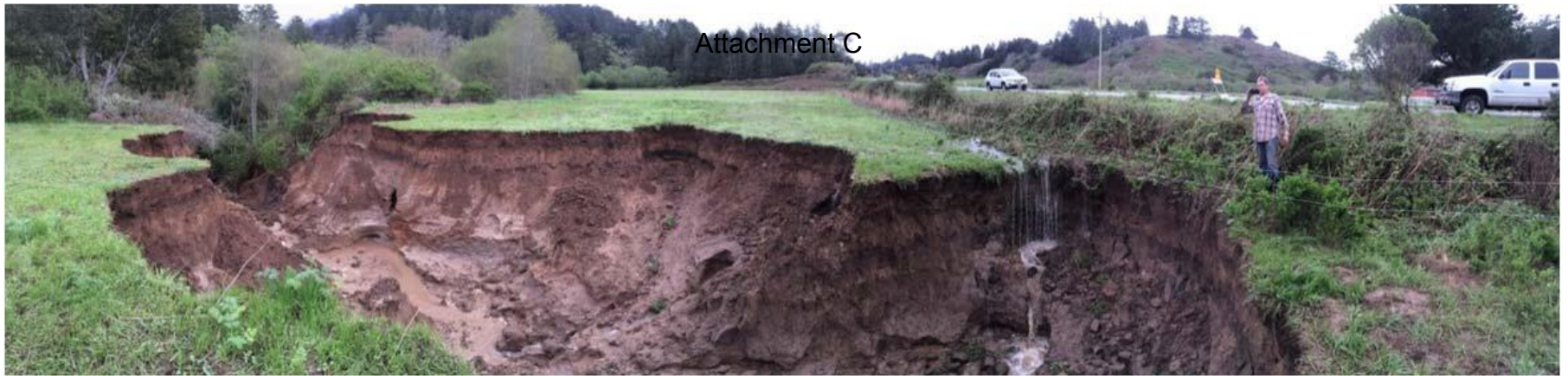
I previously reported that we planned to improve a reservoir in La Honda this year (Granny Flats Reservoir, owned by Cuesta La Honda Guild). In fact, that project is intended to be constructed next year while we work with the Guild to replace and improve their Ventura Pipeline this year to reduce water loss. That project was intended to be completed this fall but is uncertain at this time due to health-related issues with a Guild staff member.

Loma Mar Water Storage Tank

Replacement of the Loma Mar Mutual Water Company's storage tank is now on hold until the water company and the County resolve questions about their easement agreement.

Cloverdale Road Gully





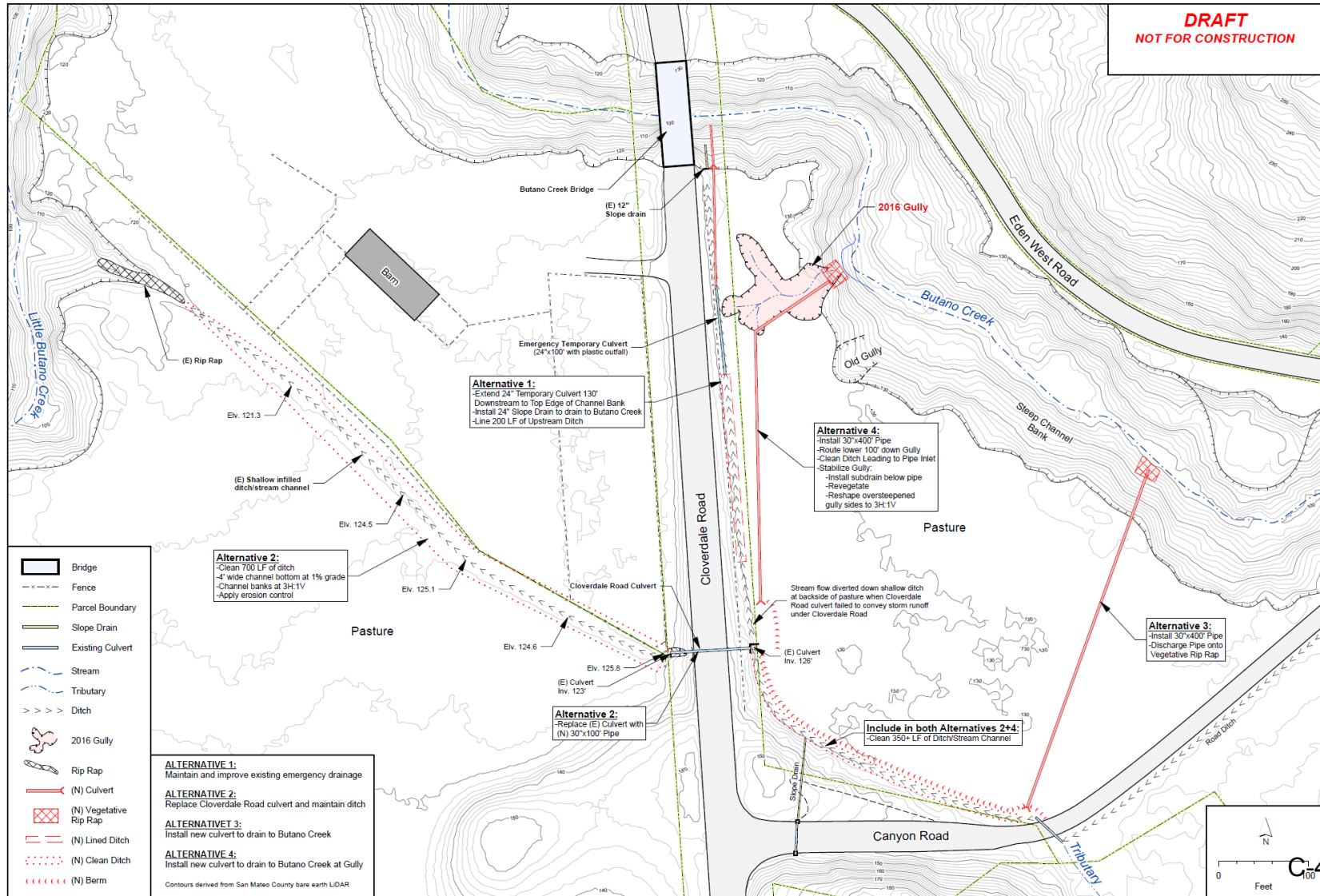
- On POST property and County
- Initiated March 7th, 2016 over 48 hour period
- 100'+ from Butano Creek, ~25' deep
- ~20' from Cloverdale Rd.
- Emergency measures (March 9th)
 - Temporary 24" diameter by 100'-long culvert
- March 11th: Another 50' arm to the north towards the bridge over Butano Creek.

- ~4,000 cy entered creek
- 200-1,000 cy likely to enter creek

- Current drainage reroute to undersized culvert at bridge



County culvert failure → ponding on east side of Cloverdale Rd.



- Identified 2 feasible design concepts
 - Need to fix gully AND solve drainage at the site
- Agency coordination meeting 8/1:
 - POST, County Public Works, RCD, Supervisor Horsley
 - CDFW, Regional Board, County Planning ...but not Army Corps
 - General consensus on design, commitment to help expedite as possible.
- Later visit by Army Corps
 - Gully repair does not need permit
 - Drainage options likely do (jurisdictional wetlands)

Permitting Catch-22

- Army Corps decision:
 - Project would not qualify for emergency permit
 - Gully does not pose “imminent threat”; too delayed in requesting permit.
- No federal nexus →
 - no way to consult with USFWS for Endangered Species Act to get take authorization
- Consultation = lengthy process, but Army Corps Emergency Permit enables project to move forward and do after-the-fact consultation with USFWS.

- Efforts to find another solution:
 - Can consultation process be sped up?
 - Piggy back onto other USFWS consultations in the area?
 - Can project be done without needing Army Corps permit?
 - Wetlands delineation → Jurisdictional Determination
 - Another way to establish federal nexus that enables project to go forward this fall?
 - Federal funding?: USFWS, NRCS
 - NMFS take some authority
 - Another way to get to emergency permitting?
 - County declaration of state of emergency
 - FEMA Hazards & Mitigation List
 - County Council letter to Army Corps?

2015 Crop Report



What is the crop report?

- **FOOD AND AGRICULTURAL CODE**

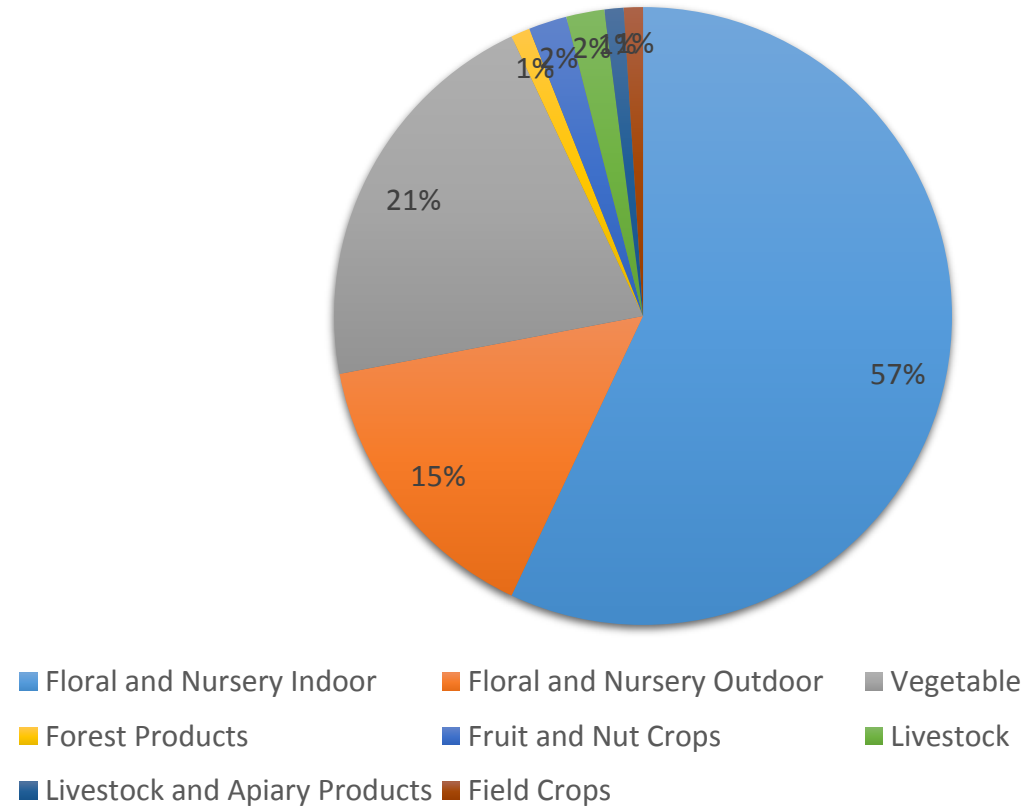
- 2272. (a) The commissioner shall make an annual report to the director on the condition of agriculture in his or her county and on what is being done to eradicate, control, or manage pests, and actions relating to the exclusion of pests or quarantine against pests. The commissioner may include in the annual report information relating to organic farming methods, biotechnology, integrated pest management, and biological control activities in the county.

- Agricultural Commissioner website has annual crop reports dating back to 1940.

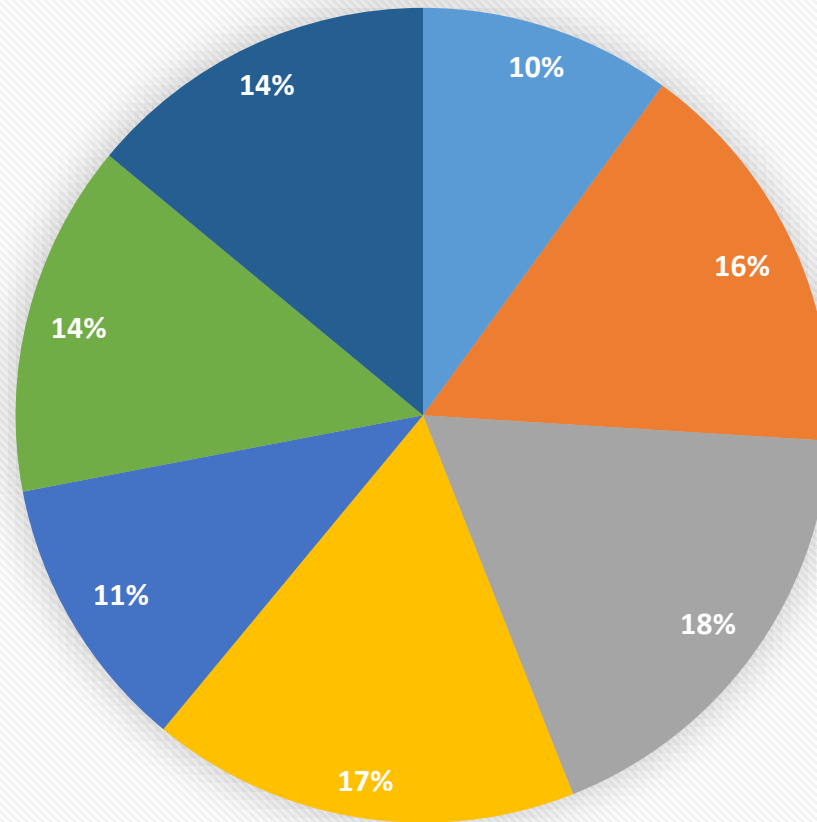
- <http://agwm.smcgov.org/agricultural-crop-report>

Values by Production

Gross values (do not account for costs associated with production, harvesting, and distribution)



Producers by Commodity Groups



■ Floral and Nursery Indoor ■ Floral and Nursery Outdoor ■ Vegetables ■ Fruit and Nut crops ■ Livestock ■ Apiary ■ Field Crops

Vegetables

- **Vegetables - ranked by acreage, and production value**
 - Brussels Sprouts -\$15,235,00
 - Miscellaneous Veg (field and indoor grown) (includes cauliflower, herbs, lettuce, mushrooms, potatoes, squash, tomatoes, etc.) - \$6,072,000
 - Fava Bean - \$1,911,000
 - Pumpkin - \$630,000
 - Peas - \$630,00
 - Leeks - \$2,761,000
 - Artichoke - \$330,000
 - Snap Bean (acreage decrease from 2014) - \$315,000
- **Total:**
 - Acreage- 2,105
 - Production Value- \$27,884,000

Fruit & Nut

- Wine grapes
 - Acres- 165
 - Production Values - \$677,000
- Miscellaneous (melon, pear, strawberry):
 - Acres – 112
 - Production value - \$1,807,000



Floral and Nursery

- Indoor:
 - Potted plants (ferns, hydrangeas, ivy, lilies, orchids, succulents, etc)
 - Square Feet – 6,682,000
 - Value \$71,121,000
 - Cut flowers (alstroemeria, lilies, roses, tulips, etc.)
 - Square Feet – 996,000
 - Value \$3,694,000
 - Bedding plants, cuttings and liners (grasses, ivy, vegetables, etc)
 - Square Feet – 163,000
 - Value \$451,000

Floral and Nursery Cont'd

Outdoor:

- Nursery Stock – herbaceous perennials, shrubs and trees.
 - Acres– 95
 - Value \$14,089,000
- Christmas Trees
 - Acres - 158
 - Value \$309,000
- Cut Flowers – dahlias, hydrangeas, sunflowers, yarrow, etc
 - Acres- 289
 - Value \$5,290,000

Livestock, Livestock Products and Apiary

- Cattle and Calves:
 - Head sold – 1,306
 - Value - \$1,719,000
- Other Livestock (goats, poultry, swine, sheep, etc.)
 - Head sold – 7,430
 - Value - \$673,000
- Honey
 - Pounds – 26,000
 - Value - \$236,000
- Other Products (eggs, cheese, wool, etc.)
 - Value - \$1,445,000



Field Crops & Forest Products

- Beans, dry edible:
 - Acres: 69
 - Value: \$349,000
- Grain:
 - Acres: 83
 - Value: \$32,000
- Hay (Oat and Rye)
 - Acres: 452
 - Value: \$144,000
- Pasture (irrigated):
 - Acres: 114
 - Value: \$18,000
- Forest products- Value \$2,183,000



Attachment D

	2015	2014	Net Difference
Floral and Nursery Crops	\$94,954,000	\$119,238,000	-\$24,284,000
Vegetables	27,884,000	22,107,000	5,777,000
Fruit and Nut Crops	2,484,000	2,794,000	-310,000
Forest Products	2,183,000	3,426,000	-1,243,000
Livestock	2,392,000	2,205,000	187,000
Livestock Products and Apiary	1,686,000	1,658,000	28,000
Field Crops	875,000	725,000	150,000
TOTAL	\$132,458,000	\$152,153,000	-\$19,695,000

Organic

- Organic farms increased by 5 (total of 24), but acreage stayed about the same.
- Production value of organic commodities in 2015 was \$6,345,000
 - 20.9% increase from 2014



Farmers Markets

- 2015:
 - 24 certified farmers' markets
 - 994 market days per year
 - 217 total producers

Commercial Fish Catch

- Top species (pounds) (2014)
 - Squid
 - Pounds: 17,344,080; Value: \$5,635,174
 - Dungeness Crab
 - Pounds: 2,476,812; Value: \$8,675,002
 - Salmon, Chinook
 - Sole
 - Sablefish
 - Sandab
 - Other: prawn, halibut, rock crab, seabass, albacore, rockfish, lingcod, bonito, flounder
- Total value 2014: \$16,812,742



Where is it all going?

