

Appendix A

65% Design Plans for the Proposed Project

(Part 1)

BUTANO CREEK CHANNEL RECONNECTION
AND RESILIENCE PROJECT

SAN MATEO COUNTY, CALIFORNIA

SAN MATEO RESOURCE CONSERVATION DISTRICT AND
CALIFORNIA DEPARTMENT OF PARKS AND RECREATION

PRELIMINARY DESIGN
NOT FOR CONSTRUCTION



PROJECT VICINITY MAP
(NOT TO SCALE)



PROJECT LOCATION MAP
(NOT TO SCALE)

CONTACTS

SMRCD	KELLYX NELSON , EXECUTIVE DIRECTOR	(650) 712-7765 X 102
ALNUS ECOLOGICAL	JIM ROBINS, PROJECT MANAGER	(510) 332-9895
CA DEPARTMENT OF PARKS AND RECREATION	TIM HYLAND, PROJECT MANAGER	(831) 335-6384
CA DEPARTMENT OF PARKS AND RECREATION	CHRIS SPOHRER, DISTRICT SUPERINTENDENT	(831) 335-6390
cbec, inc.	CHRIS HAMMERSMARK, PROJECT ENGINEER	(916) 668-5236


CONTOURS AND ELEVATIONS SHOWN ON PLANS PROVIDED BY CBEC SITE SURVEY OF BUTANO MARSH AND CREEK TIED INTO NATIONAL GEODETIC SURVEY FIRST ORDER, CLASS 1, VERTICAL CONTROL POINT HT1506 LOCATED AT LAT:37°15'34.4", LONG:122°24'46.9" WITH A PUBLISHED ELEVATION OF 50.31 FT (NAVD88, GEOID 09). SURROUNDING TOPOGRAPHY IS FROM THE NATIONAL OCEANIC AND ATMOSPHERIC ADMINISTRATION 2009-2011 LIDAR DATASET.


Sheet List Table	
Sheet Number	Sheet Title
C1	COVER SHEET
C2	EXISTING CONDITIONS
C3	STAGING AND ACCESS PLAN
C4	SHEET LAYOUT PLAN
C5	PLAN VIEW (1 OF 7)
C6	PLAN VIEW (2 OF 7)
C7	PLAN VIEW (3 OF 7)
C8	PLAN VIEW (4 OF 7)
C9	PLAN VIEW (5 OF 7)
C10	PLAN VIEW (6 OF 7)
C11	PLAN VIEW (7 OF 7)
C12	CHANNEL PROFILE (1 OF 2)
C13	CHANNEL PROFILE (2 OF 2)
C14	SECTIONS
C15	ALIGNMENT GEOMETRY TABLE
C16	MARSH CONTROL STRUCTURE DETAILS
C17	WATER QUALITY BERM ENHANCEMENT DETAILS
C18	PESCADERO LAGOON WATER SURFACE ELEVATION CONTROL

USE OF DOCUMENTS:
THIS DOCUMENT, INCLUDING
THE INCORPORATED
DESIGN, IS THE PROPERTY
OF CBEC AND IS NOT TO
BE REPRODUCED OR
USED FOR ANY OTHER
PROJECT WITHOUT THE
WRITTEN AUTHORIZATION
OF CBEC, INC.

DOCUMENT RELEASE
65% DESIGNS
REVISION NOTES

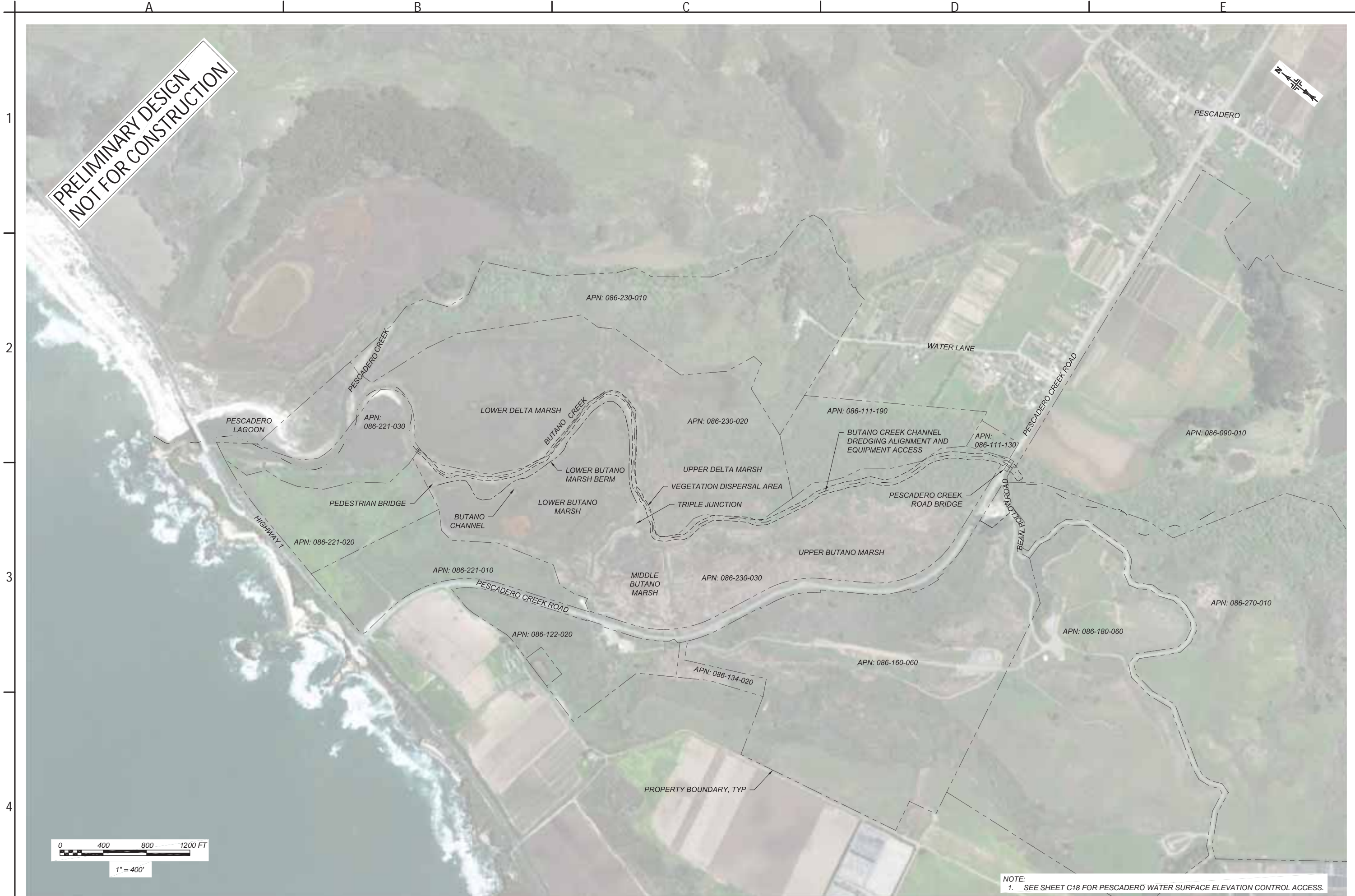
DESIGNED
L CH/JS/SD
DRAWN
JP/JM
REVIEWED
SD
APPROVED
CH

PREPARED BY:


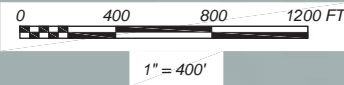
CLIENT:

SAN MATEO
RESOURCE CONSERVATION DISTRICT
625 MIRAMONTES ST #103
HALF MOON BAY, CA 94019
(650) 712-7765

CALIFORNIA
BUTANO CREEK CHANNEL RECONNECTION
AND RESILIENCE PROJECT
COVER SHEET


PESCADERO
JOB NUMBER
16-1027-3
DATE
MAR 2018
SHEET
C1
1 OF 18



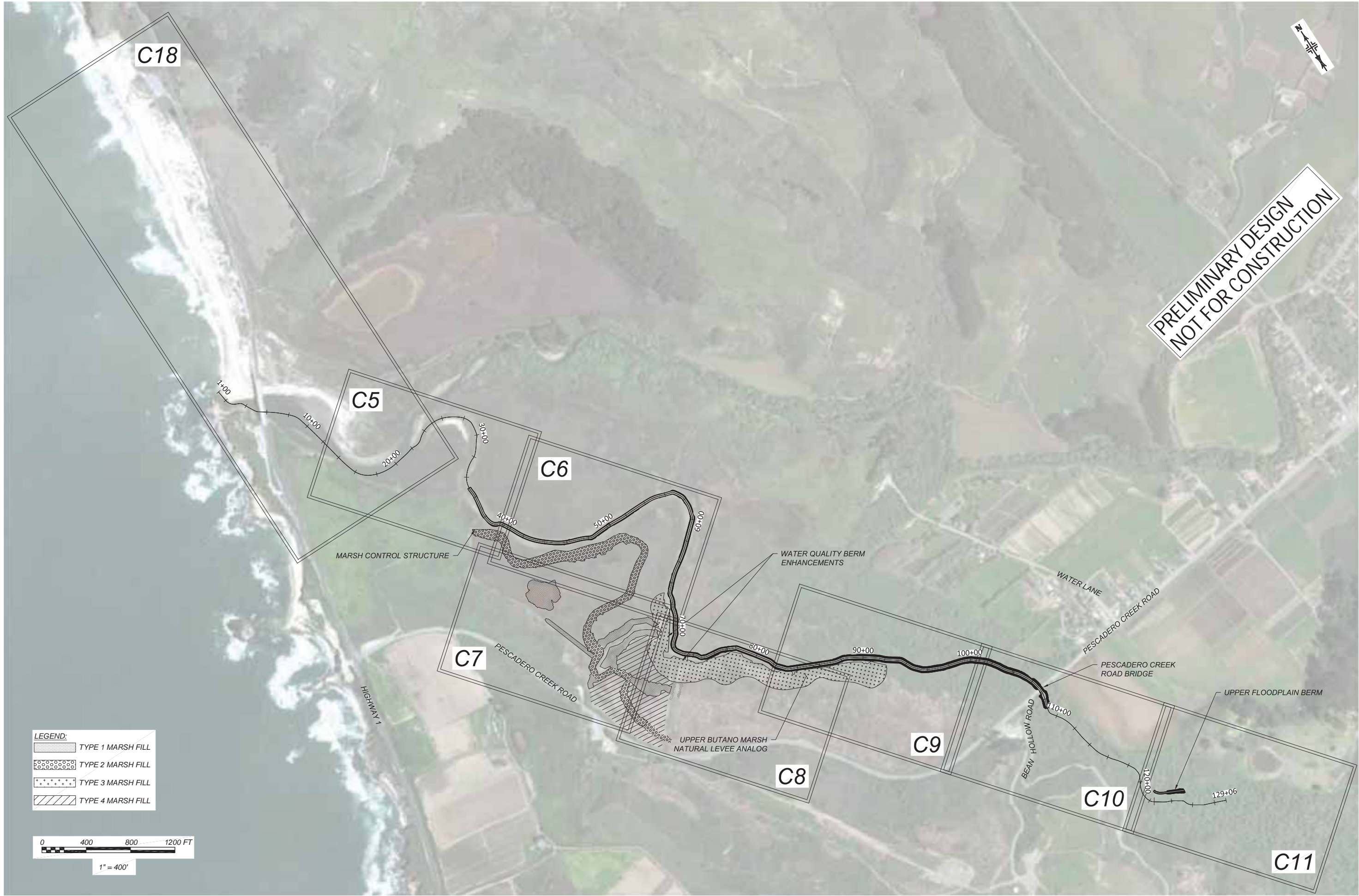
PRELIMINARY DESIGN
NOT FOR CONSTRUCTION



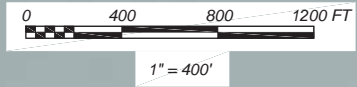
NOTE:
1. SEE SHEET C18 FOR PESCADERO WATER SURFACE ELEVATION CONTROL ACCESS.

PESCADERO	CALIFORNIA	CLIENT:	SAN MATEO RESOURCE CONSERVATION DISTRICT 625 MIRAMONTE ST #103 HALF MOON BAY, CA 94019 (650) 712-7765	PREPARED BY:		DESIGNED CH/JS/SD	DRAWN JP/JM	REVIEWED SD	APPROVED CH	DOCUMENT RELEASE 65% DESIGNS	REVISION NOTES	USE OF DOCUMENTS THIS DOCUMENT, INCLUDING THE INCORPORATED DRAWINGS, IS THE PROPERTY OF CBEC AND SHALL NOT BE REPRODUCED OR USED FOR ANY OTHER PROJECT WITHOUT THE WRITTEN AUTHORIZATION OF CBEC, INC.

JOB NUMBER 16-1027-3	C2 2 OF 18
DATE MAR 2018	
SHEET	



LEGEND:	
	TYPE 1 MARSH FILL
	TYPE 2 MARSH FILL
	TYPE 3 MARSH FILL
	TYPE 4 MARSH FILL



USE OF DOCUMENTS:
THIS DOCUMENT, INCLUDING
THE INCORPORATED
DRAWINGS, IS THE PROPERTY
OF CBEC AND SHALL NOT BE
REPRODUCED OR USED FOR
ANY OTHER PROJECT WITHOUT
THE WRITTEN AUTHORIZATION
OF CBEC, INC.

DESIGNED	DOCUMENT RELEASE
CH/JS/SD	65% DESIGNS
DRAWN	REVISION NOTES
JP/JM	
REVIEWED	
SD	
APPROVED	
CH	

PREPARED BY:

CLIENT:

CALIFORNIA

SAN MATEO
RESOURCE CONSERVATION DISTRICT

625 MIRAMONTE ST #103
HALF MOON BAY, CA 94019
(650) 712-7765

PESCADERO

BUTANO CREEK CHANNEL RECONNECTION
AND RESILIENCE PROJECT

SHEET LAYOUT PLAN

JOB NUMBER

16-1027-3

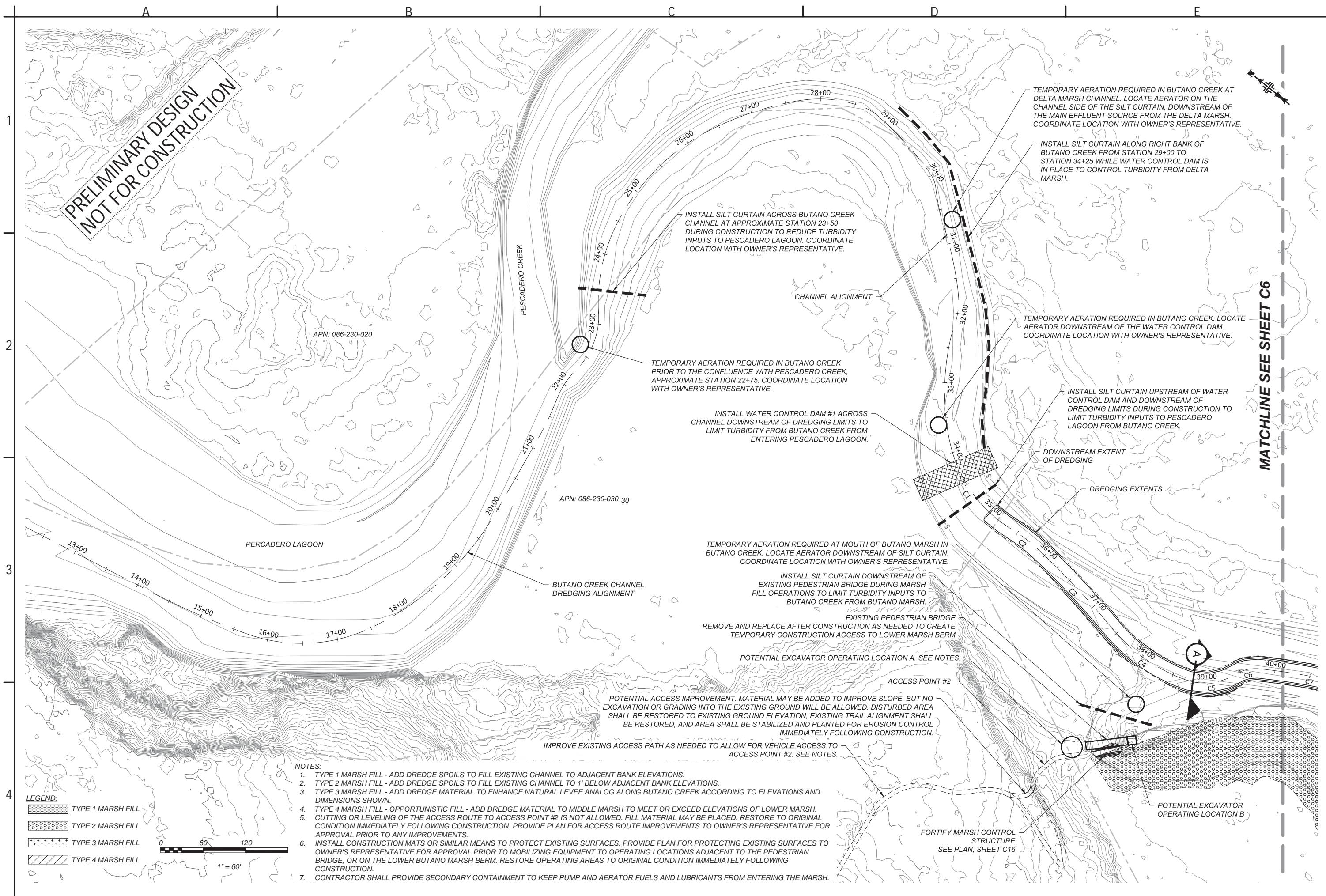
DATE

FEB 2018

SHEET

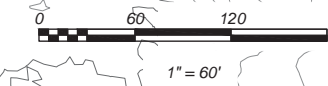
C4

4 OF 18



LEGEND:

- TYPE 1 MARSH FILL
- TYPE 2 MARSH FILL
- TYPE 3 MARSH FILL
- TYPE 4 MARSH FILL




NOTES:

1. TYPE 1 MARSH FILL - ADD DREDGE SPOILS TO FILL EXISTING CHANNEL TO ADJACENT BANK ELEVATIONS.
2. TYPE 2 MARSH FILL - ADD DREDGE SPOILS TO FILL EXISTING CHANNEL TO 1' BELOW ADJACENT BANK ELEVATIONS.
3. TYPE 3 MARSH FILL - ADD DREDGE MATERIAL TO ENHANCE NATURAL LEVEE ANALOG ALONG BUTANO CREEK ACCORDING TO ELEVATIONS AND DIMENSIONS SHOWN.
4. TYPE 4 MARSH FILL - OPPORTUNISTIC FILL - ADD DREDGE MATERIAL TO MIDDLE MARSH TO MEET OR EXCEED ELEVATIONS OF LOWER MARSH. CUTTING OR LEVELING OF THE ACCESS ROUTE TO ACCESS POINT #2 IS NOT ALLOWED. FILL MATERIAL MAY BE PLACED. RESTORE TO ORIGINAL CONDITION IMMEDIATELY FOLLOWING CONSTRUCTION. PROVIDE PLAN FOR ACCESS ROUTE IMPROVEMENTS TO OWNER'S REPRESENTATIVE FOR APPROVAL PRIOR TO ANY IMPROVEMENTS.
5. INSTALL CONSTRUCTION MATS OR SIMILAR MEANS TO PROTECT EXISTING SURFACES. PROVIDE PLAN FOR PROTECTING EXISTING SURFACES TO OWNER'S REPRESENTATIVE FOR APPROVAL PRIOR TO MOBILIZING EQUIPMENT TO OPERATING LOCATIONS ADJACENT TO THE PEDESTRIAN BRIDGE, OR ON THE LOWER BUTANO MARSH BERM. RESTORE OPERATING AREAS TO ORIGINAL CONDITION IMMEDIATELY FOLLOWING CONSTRUCTION.
7. CONTRACTOR SHALL PROVIDE SECONDARY CONTAINMENT TO KEEP PUMP AND AERATOR FUELS AND LUBRICANTS FROM ENTERING THE MARSH.


USE OF DOCUMENTS:
THIS DOCUMENT, INCLUDING
THE INFORMATION
CONTAINED HEREIN,
IS THE PROPERTY OF
CBEC AND SHALL NOT BE
REPRODUCED OR
TRANSMITTED IN ANY
FORM OR BY ANY
MEANS, ELECTRONIC
OR MECHANICAL,
INCLUDING PHOTOCOPYING,
RECORDING, OR BY
ANY INFORMATION
SYSTEM, WITHOUT
THE WRITTEN
AUTHORIZATION
OF CBEC, INC.

DOCUMENT RELEASE
65% DESIGNS
REVISION NOTES

DESIGNED
CH/JS/SD
DRAWN
JP/JM
REVIEWED
SD
APPROVED
CH

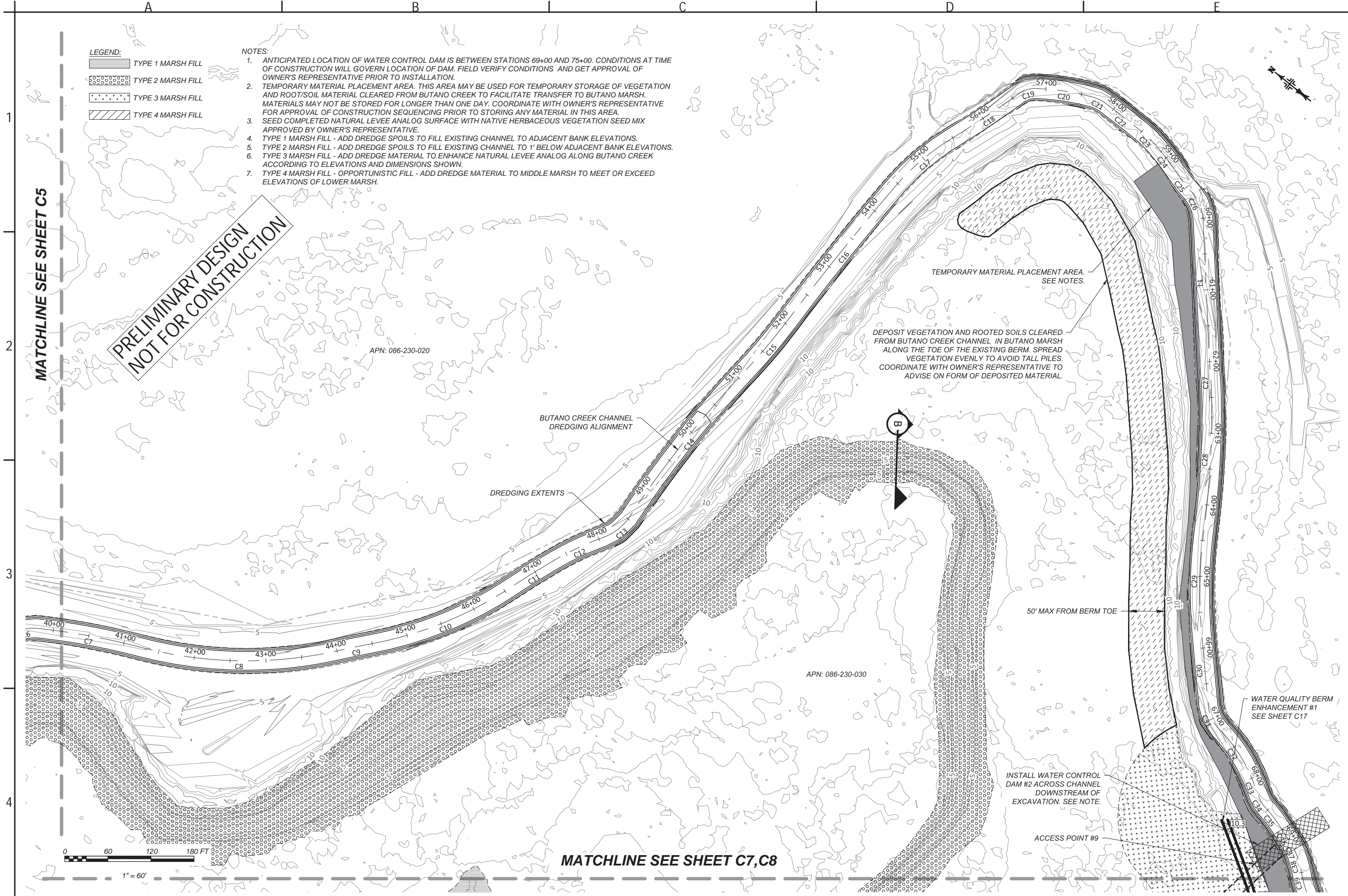
PREPARED BY:


SAN MATEO
RESOURCE CONSERVATION DISTRICT
625 MIRAMONTE ST #103
HALF MOON BAY, CA 94019
(650) 712-7765

CLIENT:


CALIFORNIA
BUTANO CREEK CHANNEL RECONNECTION
AND RESILIENCE PROJECT
PLAN VIEW (1 OF 7)

JOB NUMBER
16-1027-3
DATE
MAR 2018
SHEET
C5
5 OF 18



LEGEND:

- TYPE 1 MARSH FILL
- TYPE 2 MARSH FILL
- TYPE 3 MARSH FILL
- TYPE 4 MARSH FILL

NOTES:

1. ANTICIPATED LOCATION OF WATER CONTROL DAM IS BETWEEN STATIONS 69+00 AND 75+00. CONDITIONS AT TIME OF CONSTRUCTION WILL GOVERN LOCATION OF DAM. FIELD VERIFY CONDITIONS AND GET APPROVAL OF OWNER'S REPRESENTATIVE PRIOR TO INSTALLATION.
2. TEMPORARY MATERIAL PLACEMENT AREA. THIS AREA MAY BE USED FOR TEMPORARY STORAGE OF VEGETATION AND ROOT/SOIL MATERIAL CLEARED FROM BUTANO CREEK TO FACILITATE TRANSFER TO BUTANO MARSH. MATERIALS MAY NOT BE STORED FOR LONGER THAN ONE DAY. COORDINATE WITH OWNER'S REPRESENTATIVE FOR APPROVAL OF CONSTRUCTION SEQUENCING PRIOR TO STORING ANY MATERIAL IN THIS AREA.
3. SEED COMPLETED NATURAL LEVEE ANALOG SURFACE WITH NATIVE HERBACEOUS VEGETATION SEED MIX APPROVED BY OWNER'S REPRESENTATIVE.
4. TYPE 1 MARSH FILL - ADD DREDGE SPOILS TO FILL EXISTING CHANNEL TO ADJACENT BANK ELEVATIONS.
5. TYPE 2 MARSH FILL - ADD DREDGE SPOILS TO FILL EXISTING CHANNEL TO 1' BELOW ADJACENT BANK ELEVATIONS.
6. TYPE 3 MARSH FILL - ADD DREDGE MATERIAL TO ENHANCE NATURAL LEVEE ANALOG ALONG BUTANO CREEK ACCORDING TO ELEVATIONS AND DIMENSIONS SHOWN.
7. TYPE 4 MARSH FILL - OPPORTUNISTIC FILL - ADD DREDGE MATERIAL TO MIDDLE MARSH TO MEET OR EXCEED ELEVATIONS OF LOWER MARSH.

USE OF DOCUMENTS:
THIS DOCUMENT, INCLUDING THE INCORPORATED SHEETS, IS THE PROPERTY OF CBEC. IT IS TO BE USED FOR THE PROJECT AND SHALL NOT BE REPRODUCED OR USED FOR ANY OTHER PROJECT WITHOUT THE WRITTEN AUTHORIZATION OF CBEC, INC.

DOCUMENT RELEASE
65% DESIGNS

REVISION NOTES

DESIGNED
CH/JS/SD

DRAWN
JP/JM

REVIEWED
SD

APPROVED
CH

PREPARED BY:

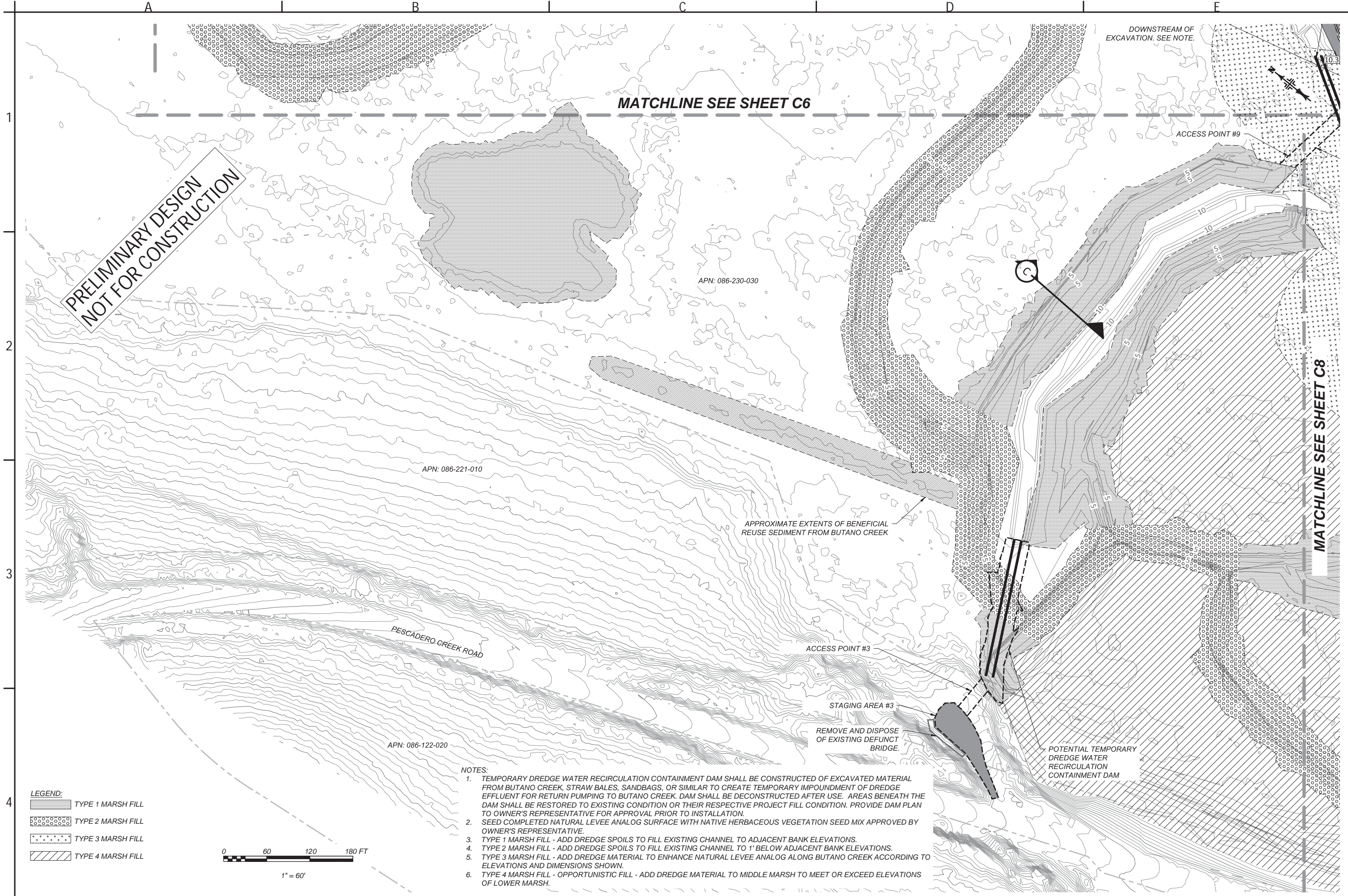
CLIENT:

CALIFORNIA
**BUTANO CREEK CHANNEL RECONNECTION
AND RESILIENCE PROJECT**

PESCADERO
JOB NUMBER
16-1027-3
DATE
MAR 2018
SHEET
C6
6 OF 18

SAN MATEO
RESOURCE CONSERVATION DISTRICT
625 MIRAMONTES ST #103
HALF MOON BAY, CA 94019
(650) 712-7765

PLAN VIEW (2 OF 7)



LEGEND:

TYPE 1 MARSH FILL

TYPE 2 MARSH FILL

TYPE 3 MARSH FILL

TYPE 4 MARSH FILL

0 60 120 180 FT

1" = 60'

NOTES:

1. TEMPORARY DREDGE WATER RECIRCULATION CONTAINMENT DAM SHALL BE CONSTRUCTED OF EXCAVATED MATERIAL FROM BUTANO CREEK, STRAW BALES, SANDBAGS, OR SIMILAR TO CREATE TEMPORARY IMPOUNDMENT OF DREDGE EFFLUENT FOR RETURN PUMPING TO BUTANO CREEK. DAM SHALL BE DECONSTRUCTED AFTER USE. AREAS BENEATH THE DAM SHALL BE RESTORED TO EXISTING CONDITION OR THEIR RESPECTIVE PROJECT FILL CONDITION. PROVIDE DAM PLAN TO OWNER'S REPRESENTATIVE FOR APPROVAL PRIOR TO INSTALLATION.
2. SEED COMPLETED NATURAL LEVEE ANALOG SURFACE WITH NATIVE HERBACEOUS VEGETATION SEED MIX APPROVED BY OWNER'S REPRESENTATIVE.
3. TYPE 1 MARSH FILL - ADD DREDGE SPOILS TO FILL EXISTING CHANNEL TO ADJACENT BANK ELEVATIONS.
4. TYPE 2 MARSH FILL - ADD DREDGE SPOILS TO FILL EXISTING CHANNEL TO 1' BELOW ADJACENT BANK ELEVATIONS.
5. TYPE 3 MARSH FILL - ADD DREDGE MATERIAL TO ENHANCE NATURAL LEVEE ANALOG ALONG BUTANO CREEK ACCORDING TO ELEVATIONS AND DIMENSIONS SHOWN.
6. TYPE 4 MARSH FILL - OPPORTUNISTIC FILL - ADD DREDGE MATERIAL TO MIDDLE MARSH TO MEET OR EXCEED ELEVATIONS OF LOWER MARSH.

USE OF DOCUMENTS:
THIS DOCUMENT, INCLUDING
ALL ATTACHMENTS, IS
THE PROPERTY OF CBEC
AND SHALL NOT BE
REPRODUCED OR
TRANSMITTED IN ANY
FORM OR BY ANY
MEANS, ELECTRONIC
OR MECHANICAL,
INCLUDING PHOTOCOPYING,
RECORDING, OR BY
ANY INFORMATION
SYSTEM, WITHOUT THE
WRITTEN AUTHORIZATION
OF CBEC, INC.

DESIGNED	CH/JS/SD
DRAWN	JP/JM
REVIEWED	SD
APPROVED	CH

DOCUMENT RELEASE

65% DESIGNS

REVISION NOTES

PREPARED BY:

cbec

CLIENT:

SAN MATEO
RESOURCE CONSERVATION DISTRICT
625 MIRAMONTE ST #103
HALF MOON BAY, CA 94019
(650) 712-7765

CALIFORNIA

PESCADERO

**BUTANO CREEK CHANNEL RECONNECTION
AND RESILIENCE PROJECT**

JOB NUMBER

16-1027-3

DATE

MAR 2018

SHEET

C7

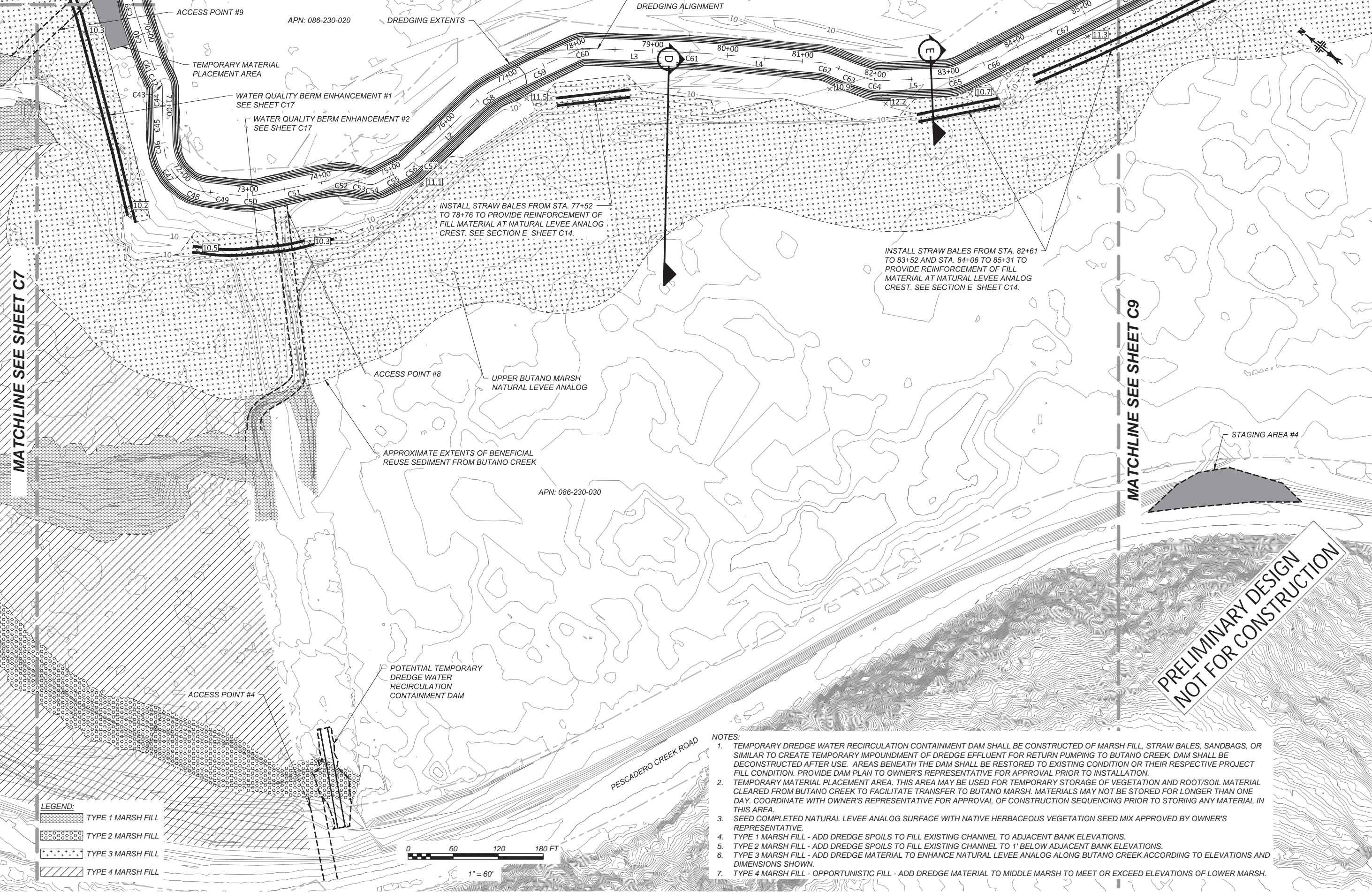
7 OF 18

PLAN VIEW (3 OF 7)

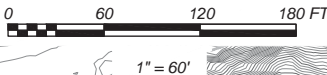
MATCHLINE SEE SHEET C6

MATCHLINE SEE SHEET C7


MATCHLINE SEE SHEET C9



- LEGEND:
- TYPE 1 MARSH FILL
 - TYPE 2 MARSH FILL
 - TYPE 3 MARSH FILL
 - TYPE 4 MARSH FILL



- NOTES:
1. TEMPORARY DREDGE WATER RECIRCULATION CONTAINMENT DAM SHALL BE CONSTRUCTED OF MARSH FILL, STRAW BALES, SANDBAGS, OR SIMILAR TO CREATE TEMPORARY IMPOUNDMENT OF DREDGE EFFLUENT FOR RETURN PUMPING TO BUTANO CREEK. DAM SHALL BE DECONSTRUCTED AFTER USE. AREAS BENEATH THE DAM SHALL BE RESTORED TO EXISTING CONDITION OR THEIR RESPECTIVE PROJECT FILL CONDITION. PROVIDE DAM PLAN TO OWNER'S REPRESENTATIVE FOR APPROVAL PRIOR TO INSTALLATION.
 2. TEMPORARY MATERIAL PLACEMENT AREA. THIS AREA MAY BE USED FOR TEMPORARY STORAGE OF VEGETATION AND ROOT/SOIL MATERIAL CLEARED FROM BUTANO CREEK TO FACILITATE TRANSFER TO BUTANO MARSH. MATERIALS MAY NOT BE STORED FOR LONGER THAN ONE DAY. COORDINATE WITH OWNER'S REPRESENTATIVE FOR APPROVAL OF CONSTRUCTION SEQUENCING PRIOR TO STORING ANY MATERIAL IN THIS AREA.
 3. SEED COMPLETED NATURAL LEVEE ANALOG SURFACE WITH NATIVE HERBACEOUS VEGETATION SEED MIX APPROVED BY OWNER'S REPRESENTATIVE.
 4. TYPE 1 MARSH FILL - ADD DREDGE SPOILS TO FILL EXISTING CHANNEL TO ADJACENT BANK ELEVATIONS.
 5. TYPE 2 MARSH FILL - ADD DREDGE SPOILS TO FILL EXISTING CHANNEL TO 1' BELOW ADJACENT BANK ELEVATIONS.
 6. TYPE 3 MARSH FILL - ADD DREDGE MATERIAL TO ENHANCE NATURAL LEVEE ANALOG ALONG BUTANO CREEK ACCORDING TO ELEVATIONS AND DIMENSIONS SHOWN.
 7. TYPE 4 MARSH FILL - OPPORTUNISTIC FILL - ADD DREDGE MATERIAL TO MIDDLE MARSH TO MEET OR EXCEED ELEVATIONS OF LOWER MARSH.

USE OF DOCUMENTS: THIS DOCUMENT, INCLUDING DRAWINGS, IS TO BE USED FOR THE PROJECT ONLY. IT IS NOT TO BE USED FOR ANY OTHER PROJECT OR PURPOSE WITHOUT THE WRITTEN AUTHORIZATION OF CBEC, INC.	DOCUMENT RELEASE 65% DESIGNS	REVISION NOTES	DESIGNED	CH/J/S/SD
			DRAWN	JP/JM
			REVIEWED	SD
			APPROVED	CH
PREPARED BY: 	CLIENT: CALIFORNIA PESCADERO BUTANO CREEK CHANNEL RECONNECTION AND RESILIENCE PROJECT	SAN MATEO RESOURCE CONSERVATION DISTRICT 625 MIRAMONTE ST #103 HALF MOON BAY, CA 94019 (650) 712-7765	JOB NUMBER 16-1027-3	DATE MAR 2018
				SHEET C8
				8 OF 18