

Pillar Point Harbor Water Quality Program Update

San Mateo County Harbor District Board of Commissioners Meeting
February 21st, 2018



SAN MATEO
RESOURCE
CONSERVATION
DISTRICT

What have we been up to?



- Following up on next steps/recommendations
- Stormwater system mapping, cleaning, inspections
- Education/outreach
- First Flush
- Identifying sources of bacteria coming into harbor



Recommendations	Partners and Leverage
Inspect stormwater & sewer lines in priority areas then repair if needed	HD, RCD, County, GSD
Dye test connections & drains if needed (ex: wash areas, toilets, sinks)	HD, RCD, GSD Business/property owners
Clean stormwater system on Capistrano Rd (not just catch basins & outfall)	County
Education, outreach, assistance to businesses & residences (watersheds, pet waste, best practices etc)	NRCS, SAM, County, HD, RCD
Water quality sample collection as needed and data integration	Surfrider (Yacht Club Fundraiser), HD, RCD
Microbial Source Tracking	C/CAG (Water Pollution Prevention Program), HD, RCD
Develop remediation measures and best management practices	NRCS, C/CAG, HD, RCD



County and Harbor District Stormwater Inspection Areas



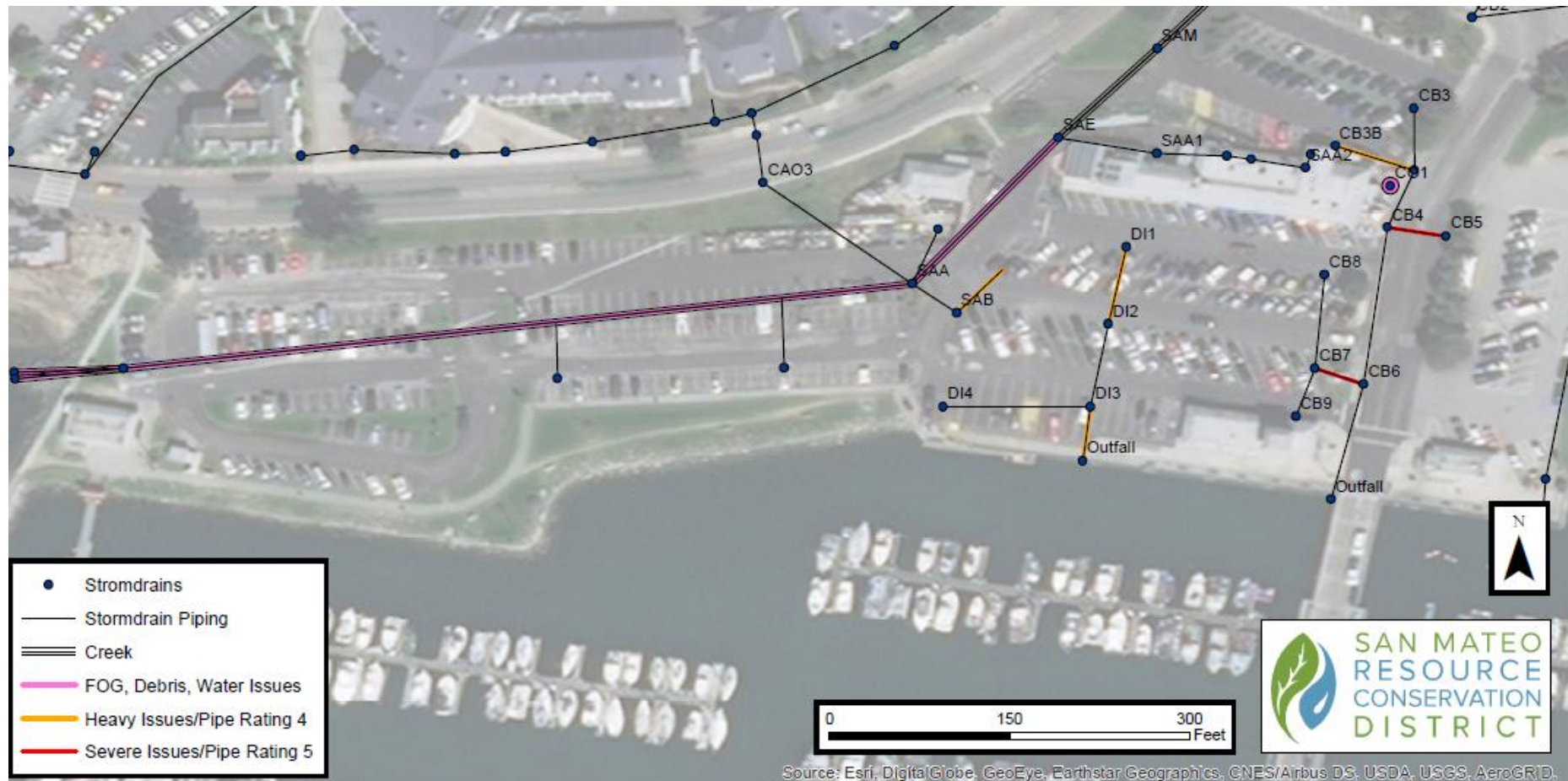
What we found...

- Condition and layout of stormwater systems
- Found specific vectors & aggravators of pollution
 - HD system- washdown connection, broken pipes, FOG/debris, remnant lines
 - County system- groundwater infiltration and unknown connections and pipes
- Tested several sewer lines with dye and didn't see evidence of leakage into stormwater system or harbor

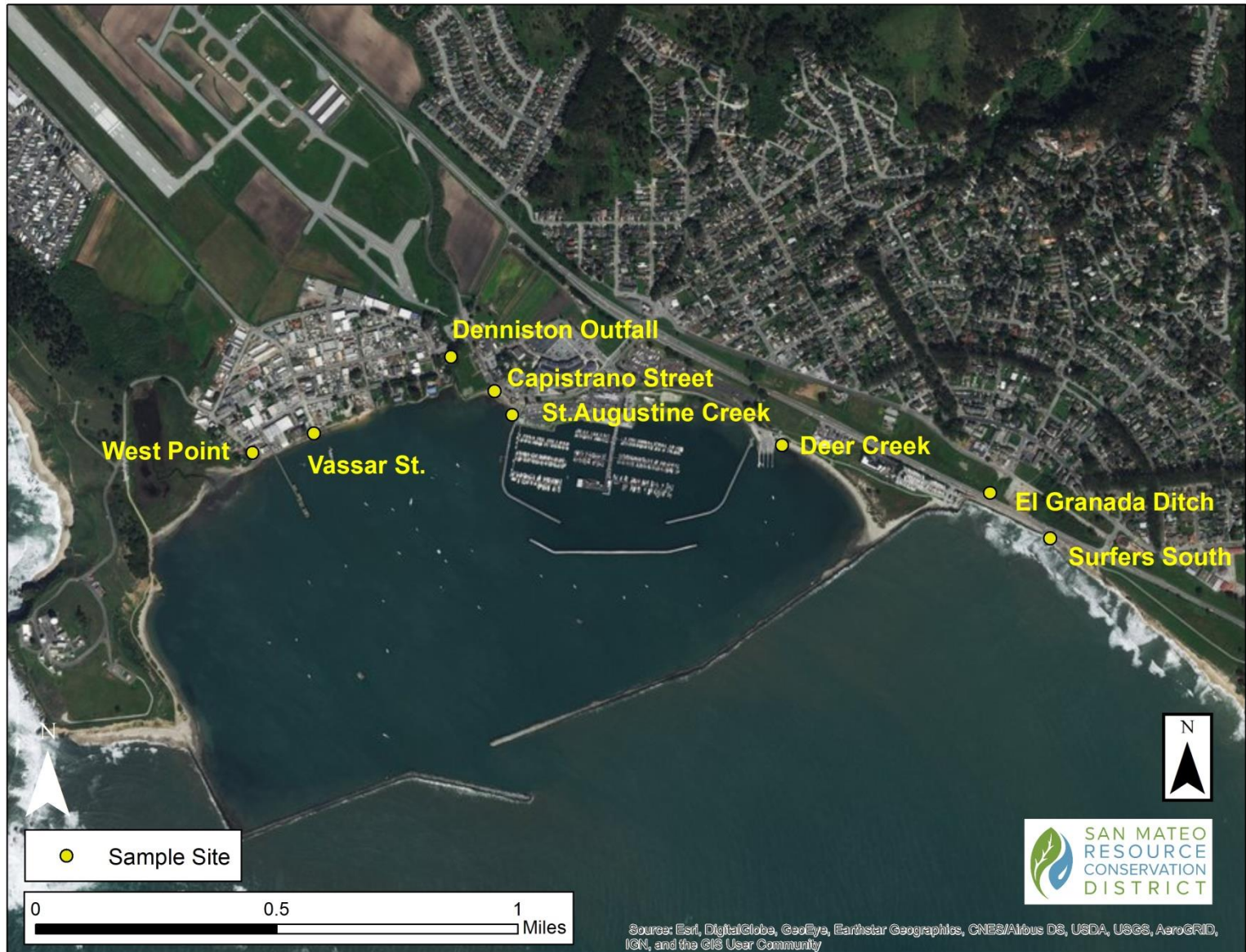




Harbor District Inspection Results



Monitoring Sites



First Flush Summary

Pollutant	Exceedance Rates at Historic Sites (2008-2017)	Locations of most exceedances and highest values
Bacteria	98%	Capistrano Street, Surfers South
Orthophosphate	72%	West Point, El Granada Ditch
Copper	55%	West Point
Zinc	30%	West Point

Lead, nitrate and TSS = 0%



Some Findings

- Denniston Outfall
 - Bacteria from residential stormwater system into creek
- Capistrano Outfall
 - Groundwater infiltration contributes most water to outfall (from north side)- contamination mechanism?
- St. Augustine Outfall
 - Creek has some background bacteria but may be higher due to FOG/debris/sediment in harbor system
- Microbial source tracking info in June



Next Steps

- Fix broken/failing stormwater pipes & FOG/debris issues
- Map, clean, & inspect rest of harbor stormwater system
- Continue working w/ partners (County & Surfrider) to identify sources of bacteria entering the harbor
- Continue educating tenants & harbor staff about best practices
- Continue scoping and implementing solutions (ex: sealing washdown connection) and providing technical assistance

Budget Update

- Total Budget (FY17-FY19): \$146,370
- FY17 Spent:\$67,788
- FY18 Spent (through 12/31/17): \$48,521
 - \$15,200 of this was for inspection contractor
- Remaining Budget: \$30,061
- Preparing SOW/Budget proposal for rest of FY18 & FY19

Thank you!



Brittani Bohlke
Brittani@sanmateorcd.org
650.712.7765
www.sanmateorcd.org
www.facebook.com/sanmateorcd