

Memorandum

Date: August 7, 2025
To: Board of Directors
From: Kellyx Nelson
Re: Recommendation to Contract with Bay Area Tree Specialists for the Wavecrest Fire Resiliency Project

RCD staff recommends the Board of Directors approve contracting with Bay Area Tree Specialists to implement the Wavecrest Fire Resiliency Project in Half Moon Bay.

The purpose of the project is to improve community fire resiliency while maintaining and improving monarch butterfly habitat, as well as serve as a demonstration and pilot for how both benefits can be achieved. It is a partnership between the RCD and Coastside Land Trust (CLT) on their Wavecrest property in Half Moon Bay.

The scope of work for this contract includes treatment of 4.5 acres of understory in a predominately eucalyptus stand to reduce the density and continuity of dead, dying, diseased, and overly dense vegetation, while improving monarch overwintering habitat.

RCD and CLT selected Bay Area Tree Specialists (BATS) as the contractor for the project for an amount not to exceed \$128,000. Staff from the RCD and Coastside Land Trust reviewed the contractor's proposal, determining it to be reasonable. BATS is a qualified contractor and has experience working with the RCD as well as extensive experience with local eucalyptus management, e.g. in Quarry Park and along Highway 92.

The Procurement and Subaward Policy adopted by the board on May 18, 2023 and amended by Board of Directors October 22, 2024 requires that contracting in an amount over \$75,000 for projects of this type on private property do not require a competitive bid process and do require board approval.

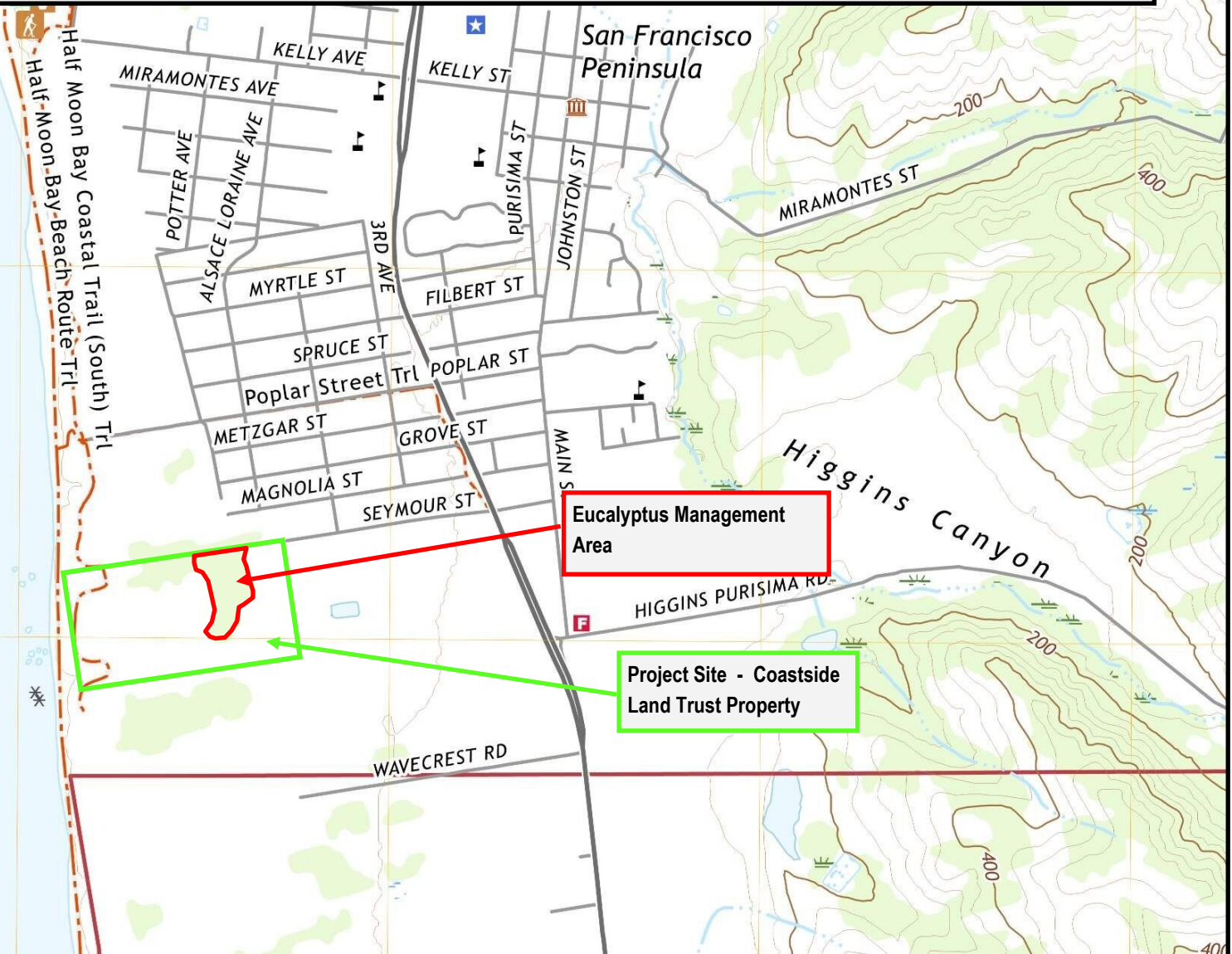
Wavecrest Fuel Reduction

Project Overview Map

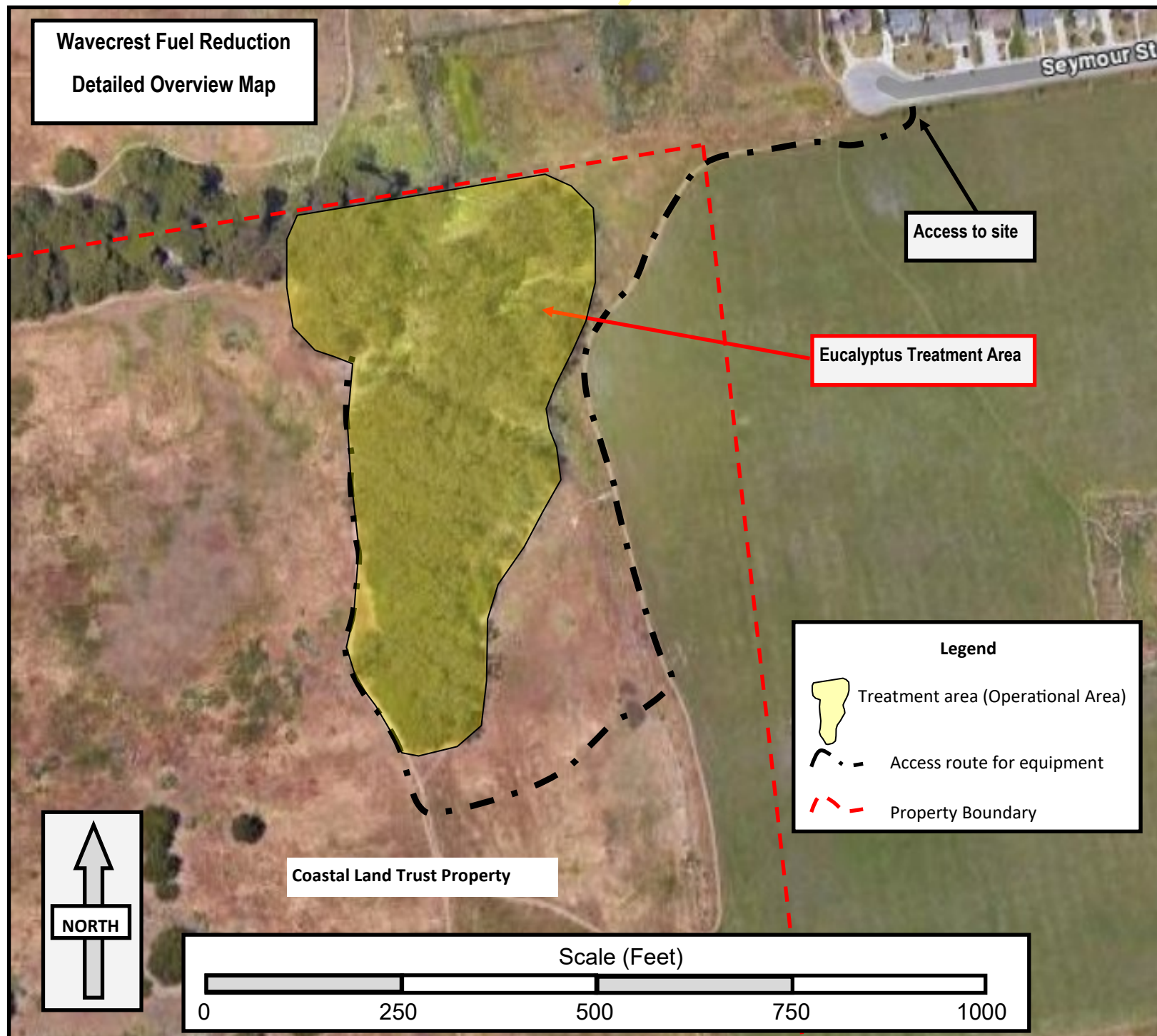
Half Moon Bay 7.5 Quad

ROAD CLASSIFICATION			
Expressway		Local Connector	
Secondary Hwy		Local Road	
Ramp		4WD	
Interstate Route		US Route	State Route

HALF MOON BAY, CA
2021






Wavecrest Fuel Reduction
Detailed Overview Map



Access to site

Eucalyptus Treatment Area

Legend

-  Treatment area (Operational Area)
-  Access route for equipment
-  Property Boundary

Coastal Land Trust Property

Scale (Feet)

0

250

500

750

1000

NORTH